

Katie Hobbs
Governor

OFFICE OF ECONOMIC OPPORTUNITY

1400 WEST WASHINGTON STREET SUITE 3300
PHOENIX, ARIZONA 85007

Mary Foote
Director

April 16, 2026

Total Nonfarm Employment Decreased by 5,400 Jobs Since February 2025 Arizona Unemployment Increased to 4.6%

The Arizona seasonally adjusted (SA) unemployment rate increased to 4.6% in February 2026 from 4.5% in January 2026. The U.S. SA unemployment rate increased to 4.4% in February 2026 from 4.3% in January 2026.

Month over month, Arizona's SA labor force decreased by 13,536 individuals, or -0.4%. Year over year, the SA labor force increased by 14,000 individuals, or 0.4%.

Month over month, Arizona not-seasonally adjusted (NSA) total nonfarm employment increased by 31,200 jobs, or 1.0%. Year over year, NSA total nonfarm employment decreased by 5,400 jobs, or -0.2%. Arizona SA total nonfarm employment increased by 11,000 individuals, or 0.3%, month over month.

Arizona, U.S. Employment Indicators

Unemployment Rate	Feb. '26	Jan. '26	Feb. '25
Arizona (SA)	4.6%	4.5%	4.2%
United States (SA)	4.4%	4.3%	4.2%
Arizona (NSA)	4.7%	4.8%	4.0%
United States (NSA)	4.7%	4.7%	4.5%
Arizona NSA Nonfarm Employment (in Thousands)	Feb. '26	Jan. '26	Feb. '25
Overall	3,286.7	3,255.5	3,292.1
Over-Month % Chg.	1.0%	-1.4%	0.5%
Over-Year % Chg.	-0.2%	-0.6%	0.6%
Arizona SA Nonfarm Employment (in Thousands)	Feb. '26	Jan. '26	Feb. '25
Overall	3,273.3	3,262.3	3,273.6
Over-Month % Chg.	0.3%	0.2%	-0.1%
Over-Year % Chg.	0.0%	-0.4%	0.5%

Month Over Month

Arizona NSA nonfarm employment increased by 31,200 jobs in February. Prior to the pandemic (2010-2019), NSA nonfarm employment gained 25,100 jobs on average in February. The private sector recorded a gain of 21,500 jobs in February, led by gains in Leisure & Hospitality (8,400 jobs) and Professional & Business Services (6,900 jobs). Prior to the pandemic (2010-2019), private sector employment averaged a gain of 13,800 jobs in February. The government sector recorded a gain of 9,700 jobs in February, less than the pre-pandemic (2010-2019) average gain of 11,200 jobs. Employment gains in the government sector occurred primarily within Local Government (6,500 jobs).

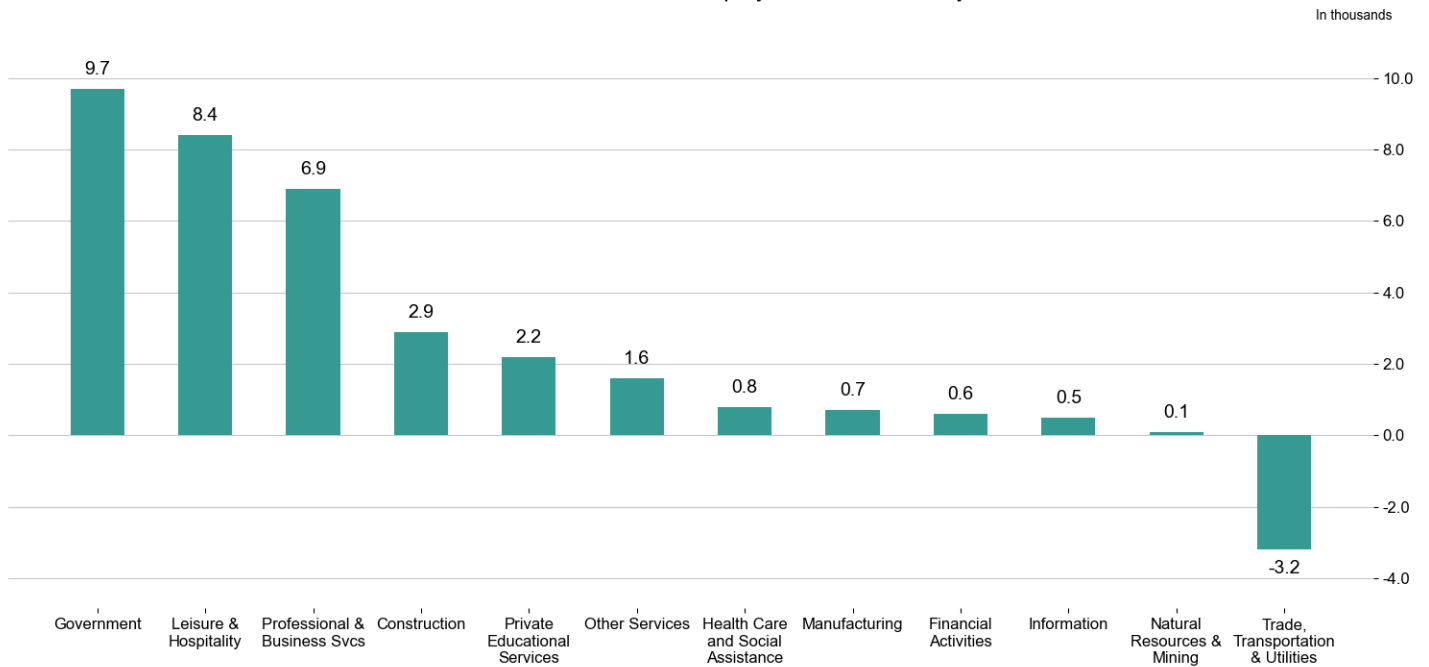
Employment gains were reported in the following sectors:

- Government (9,700 jobs)
- Leisure & Hospitality (8,400 jobs)
- Professional & Business Services (6,900 jobs)
- Construction (2,900 jobs)
- Private Educational Services (2,200 jobs)
- Other Services (1,600 jobs)
- Health Care and Social Assistance (800 jobs)
- Manufacturing (700 jobs)
- Financial Activities (600 jobs)
- Information (500 jobs)
- Natural Resources & Mining (100 jobs)

Employment losses were reported in the following sector:

- Trade, Transportation & Utilities (-3,200 jobs)

Arizona NSA Month-Over-Month Employment Gain/Loss by Sector



Year Over Year

Arizona NSA nonfarm employment decreased by 5,400 jobs or -0.2% in February year over year. Private sector employment increased by 3,000 jobs year over year, while government employment decreased by 8,400 jobs year over year.

Employment gains were reported in the following sectors:

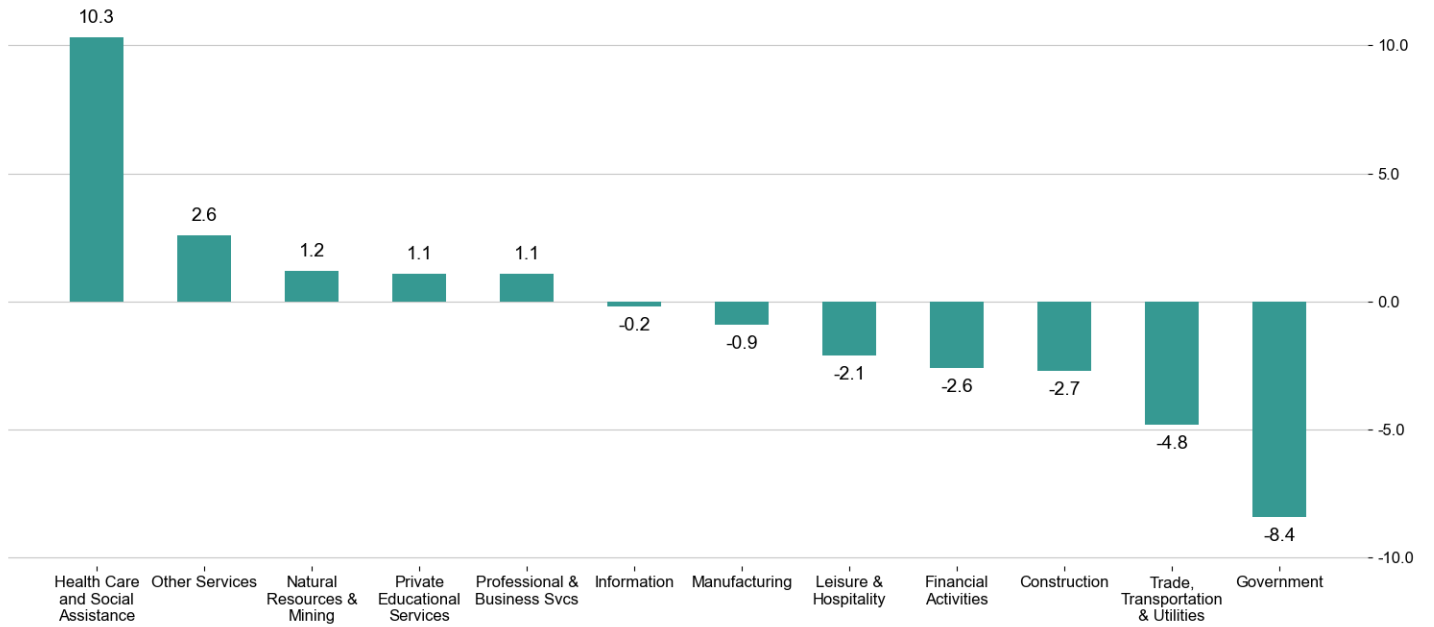
- Health Care and Social Assistance (10,300 jobs)
- Other Services (2,600 jobs)
- Natural Resources & Mining (1,200 jobs)
- Private Educational Services (1,100 jobs)
- Professional & Business Services (1,100 jobs)

Employment losses were reported in the following sectors:

- Government (-8,400 jobs)
- Trade, Transportation & Utilities (-4,800 jobs)
- Construction (-2,700 jobs)
- Financial Activities (-2,600 jobs)
- Leisure & Hospitality (-2,100 jobs)
- Manufacturing (-900 jobs)
- Information (-200 jobs)

Arizona NSA Year-Over-Year Employment Gain/Loss by Sector

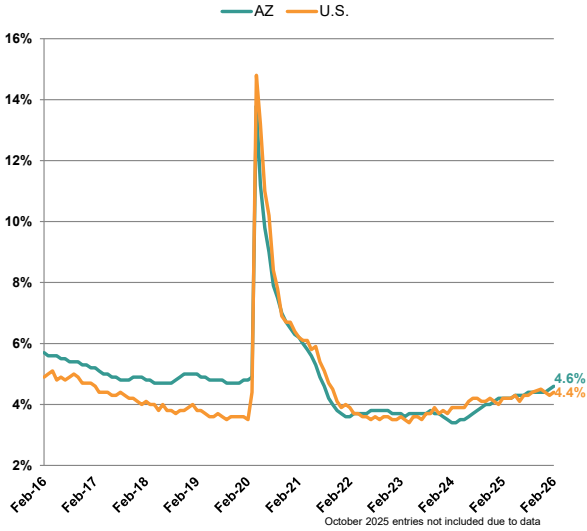
In thousands



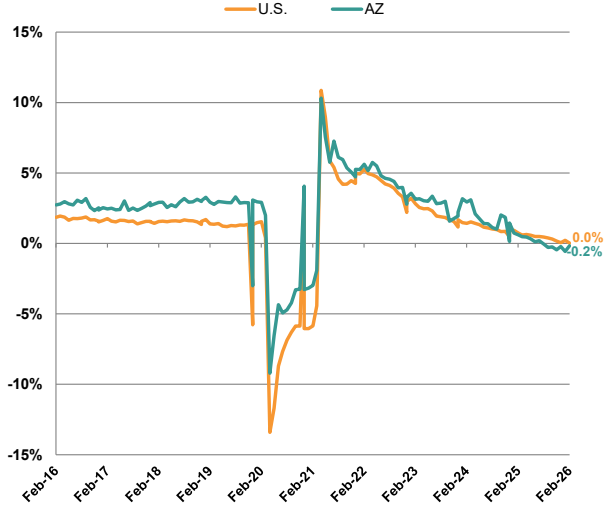
Source: Produced by the Arizona Office of Economic Opportunity in cooperation with the U.S. Dept. of Labor, Bureau of Labor Statistics

LABOR MARKET TRENDS CHARTS

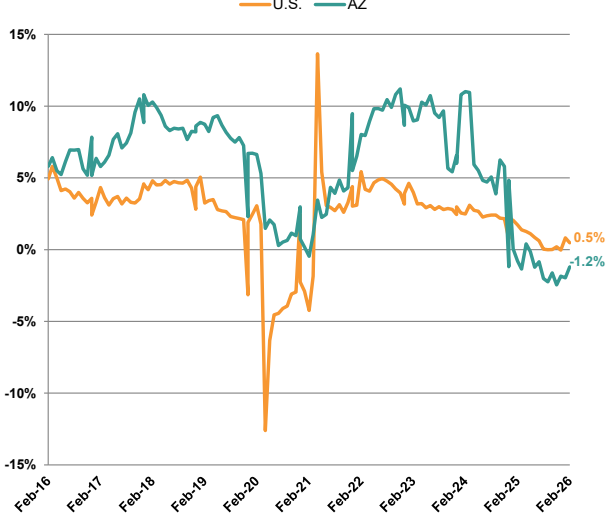
Arizona & U.S. Unemployment Rate
Seasonally Adjusted



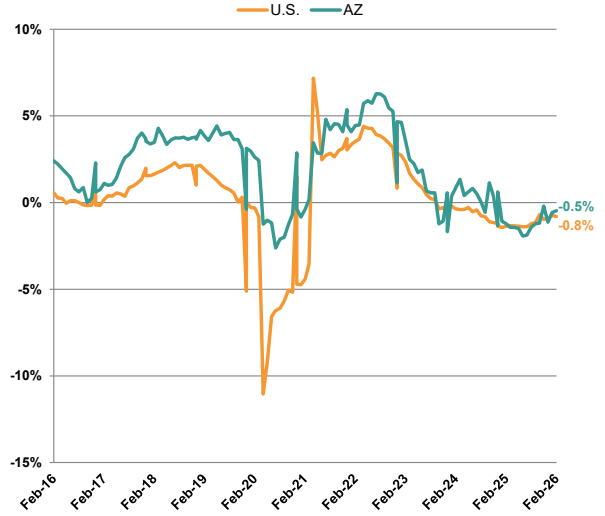
Arizona & U.S. Nonfarm Employment
Year-to-Year Percent Change



Arizona & U.S. Construction Employment
Year-to-Year Percent Change



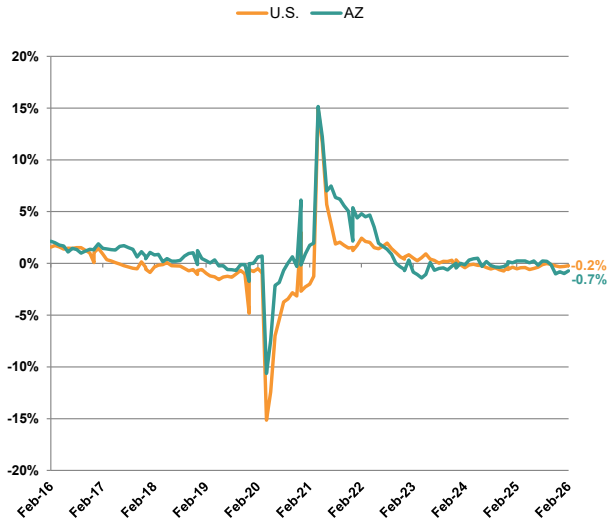
Arizona & U.S. Manufacturing Employment
Year-to-Year Percent Change



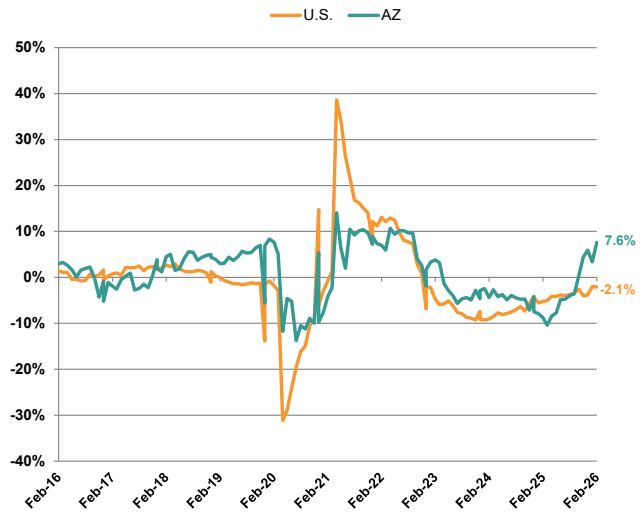
Source: Prepared by the Arizona Office of Economic Opportunity, in cooperation with the U.S. Dept. of Labor, Bureau of Labor Statistics

LABOR MARKET TRENDS CHARTS

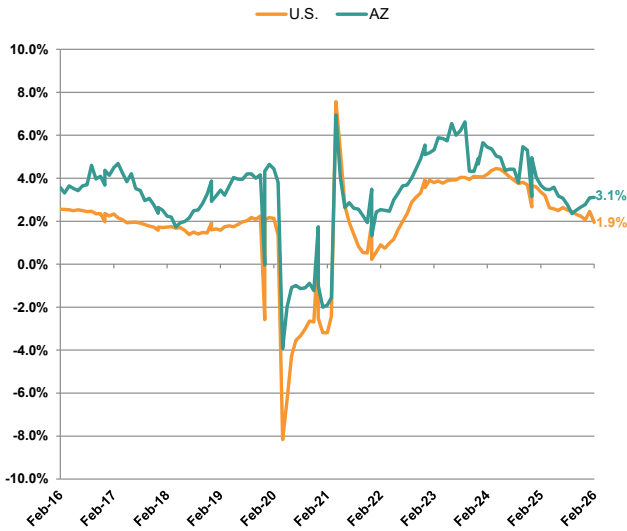
Arizona & U.S. Retail Trade
Year-to-Year Percent Change



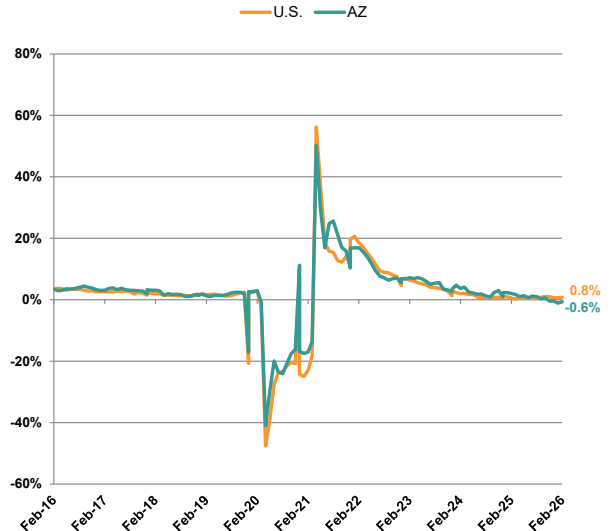
Arizona & U.S. Employment Services
Year-to-Year Percent Change



Arizona & U.S. Health Care
Year-to-Year Percent Change



Arizona & U.S. Leisure & Hospitality
Year-to-Year Percent Change



Source: Prepared by the Arizona Office of Economic Opportunity, in cooperation with the U.S. Dept. of Labor, Bureau of Labor Statistics

Table 1

Labor Force, Employment, Unemployment and Unemployment Rates^(a)

(in Thousands)

ARIZONA	February 2026 ^(c)	January 2026 ^(d)	February 2025 ^(d)	Monthly/Yearly Change	
				January '26 - February '26	February '25 - February '26
Civilian Labor Force ^(e)	3,734.9	3,798.9	3,780.1	-64.1	-45.3
Unemployment	175.8	182.8	152.2	-7.0	23.6
Unemployment Rate	4.7%	4.8%	4.0%	-0.1	0.7
Unemployment Rate (Seasonally Adjusted) ^(f)	4.6%	4.5%	4.2%	0.1	0.4
Total Employment	3,559.0	3,616.1	3,627.9	-57.1	-68.9
FLAGSTAFF MSA (Coconino County)					
Civilian Labor Force ^(e)	74.3	76.1	76.8	-1.8	-2.6
Unemployment	4.2	4.4	3.5	-0.3	0.7
Unemployment Rate (Unadjusted)	5.6%	5.8%	4.5%	-0.2	1.1
Total Employment	70.1	71.7	73.4	-1.6	-3.3
LAKE HAVASU CITY-KINGMAN MSA (Mohave County)					
Civilian Labor Force ^(e)	86.6	88.7	88.3	-2.1	-1.7
Unemployment	5.3	5.4	4.3	-0.1	1.0
Unemployment Rate (Unadjusted)	6.1%	6.1%	4.9%	0.0	1.2
Total Employment	81.3	83.3	84.0	-2.0	-2.7
PHOENIX-MESA-CHANDLER MSA (Maricopa & Pinal Counties)					
Civilian Labor Force ^(e)	2,709.7	2,751.2	2,747.9	-41.5	-38.1
Unemployment	115.0	119.7	97.9	-4.8	17.1
Unemployment Rate (Unadjusted)	4.2%	4.4%	3.6%	-0.2	0.6
Total Employment	2,594.8	2,631.5	2,650.0	-36.7	-55.2
PRESCOTT-PRESCOTT VALLEY MSA (Yavapai County)					
Civilian Labor Force ^(e)	104.2	107.0	106.6	-2.8	-2.4
Unemployment	5.0	5.2	4.2	-0.2	0.9
Unemployment Rate (Unadjusted)	4.8%	4.9%	3.9%	-0.1	0.9
Total Employment	99.2	101.8	102.5	-2.6	-3.3
SIERRA VISTA-DOUGLAS MSA (Cochise County)					
Civilian Labor Force ^(e)	45.5	46.7	48.5	-1.1	-2.9
Unemployment	2.8	2.9	2.3	-0.1	0.5
Unemployment Rate (Unadjusted)	6.1%	6.1%	4.8%	0.0	1.3
Total Employment	42.8	43.8	46.2	-1.1	-3.4

Notes: For notes and source, see end of Table 1

(Continued on next page)

Table 1 (Cont.)

Labor Force, Employment, Unemployment and Unemployment Rates^{(a)(b)}

(in Thousands)

TUCSON MSA (Pima County)	February 2026(c)	January 2026(d)	February 2025(d)	Monthly/Yearly Change	
				January '26 - February '26	February '25 - February '26
Civilian Labor Force^(e)	491.7	501.0	497.8	-9.3	-6.1
Unemployment	24.3	25.5	19.7	-1.1	4.6
Unemployment Rate (Unadjusted)	4.9%	5.1%	4.0%	-0.2	0.9
Total Employment	467.4	475.5	478.1	-8.1	-10.7

YUMA MSA (Yuma County)					
Civilian Labor Force^(e)	95.3	97.9	99.9	-2.6	-4.6
Unemployment	11.2	11.2	10.5	0.0	0.6
Unemployment Rate (Unadjusted)	11.7%	11.4%	10.5%	0.3	1.2
Total Employment	84.2	86.8	89.4	-2.6	-5.2

Notes: a) Labor force, unemployment, total employment, and unadjusted unemployment rates are produced by the Local Area Unemployment Statistics (LAUS) program in the Arizona Office of Employment and Population Statistics, in cooperation with the U.S. Dept. of Labor, Bureau of Labor Statistics (BLS). BLS data used as part of the input in producing LAUS data come from the monthly Household Survey, produced by the Census Bureau for the U.S. Department of Labor, Bureau of Labor Statistics.

For more information on the LAUS program, visit this website: <http://www.bls.gov/lau/laufaq.htm>

c) Preliminary

d) Revised

e) Adjusted to Current Population Survey (CPS 2025) to reflect place of residence

f) Normal seasonal variations have been eliminated to reflect underlying trends

MSA - Metropolitan Statistical Area

NA - Not Available

Source: Prepared by the Arizona Office of Economic Opportunity, in cooperation with the U.S. Dept. of Labor, Bureau of Labor Statistics

Table 2

Nonfarm Payroll Employment

(in Thousands, Not Seasonally Adjusted)

ARIZONA ^(a)				Amount Change		Percent Change	
	February 2026 ^(b)	January 2026 ^(c)	February 2025 ^(c)	Monthly	Over-Year	Monthly	Over-Year
				January '26 - February '26	February '25 - February '26	January '26 - February '26	February '25 - February '26
Total Nonfarm Payroll Employment^(c,d)	3,286.7	3,255.5	3,292.1	31.2	-5.4	1.0%	-0.2%
Private Sector	2,848.5	2,827.0	2,845.5	21.5	3.0	0.8%	0.1%
Government	438.2	428.5	446.6	9.7	-8.4	2.3%	-1.9%
Goods-Producing Industries	432.8	429.1	435.2	3.7	-2.4	0.9%	-0.6%
Manufacturing	192.8	192.1	193.7	0.7	-0.9	0.4%	-0.5%
Durable Goods	144.9	144.7	146.4	0.2	-1.5	0.1%	-1.0%
Fabricated Metal	23.4	23.3	23.0	0.1	0.4	0.4%	1.7%
Computer and Electronic Parts	32.3	32.2	33.3	0.1	-1.0	0.3%	-3.0%
Aerospace Products and Parts	32.1	32.0	32.2	0.1	-0.1	0.3%	-0.3%
Nondurable Goods	47.9	47.4	47.3	0.5	0.6	1.1%	1.3%
Natural Resources and Mining	16.6	16.5	15.4	0.1	1.2	0.6%	7.8%
Metal Ore Mining	14.2	14.1	13.2	0.1	1.0	0.7%	7.6%
Construction	223.4	220.5	226.1	2.9	-2.7	1.3%	-1.2%
Buildings	51.2	50.7	49.6	0.5	1.6	1.0%	3.2%
Heavy and Civil Engineering	27.2	26.7	26.9	0.5	0.3	1.9%	1.1%
Specialty Trades	145.0	143.1	149.6	1.9	-4.6	1.3%	-3.1%
Service-Providing Industries	2,853.9	2,826.4	2,856.9	27.5	-3.0	1.0%	-0.1%
Private Service Providing	2,415.7	2,397.9	2,410.3	17.8	5.4	0.7%	0.2%
Trade, Transportation and Utilities	621.0	624.2	625.8	-3.2	-4.8	-0.5%	-0.8%
Trade	462.9	463.3	467.8	-0.4	-4.9	-0.1%	-1.0%
Wholesale Trade	120.6	120.2	123.0	0.4	-2.4	0.3%	-2.0%
Retail Trade	342.3	343.1	344.8	-0.8	-2.5	-0.2%	-0.7%
Motor Vehicles and Parts	52.5	52.4	53.0	0.1	-0.5	0.2%	-0.9%
Building Material, Garden Supply	29.5	29.2	30.0	0.3	-0.5	1.0%	-1.7%
Food and Beverage	62.3	62.2	63.1	0.1	-0.8	0.2%	-1.3%
Furniture, Electronics, Appliance	14.7	14.8	15.3	-0.1	-0.6	-0.7%	-3.9%
General Merchandise	78.1	78.5	78.5	-0.4	-0.4	-0.5%	-0.5%
Department Stores	20.2	20.7	19.8	-0.5	0.4	-2.4%	2.0%
Warehouse Clubs, Supercenters	57.9	57.8	58.7	0.1	-0.8	0.2%	-1.4%
Clothing, Clothing Accessories, Jewelry	21.1	21.7	20.8	-0.6	0.3	-2.8%	1.4%
Transp., Warehousing, and Utilities	158.1	160.9	158.0	-2.8	0.1	-1.7%	0.1%
Utilities	14.0	14.0	13.5	0.0	0.5	0.0%	3.7%
Transportation and Warehousing	144.1	146.9	144.5	-2.8	-0.4	-1.9%	-0.3%
Truck Transportation	25.9	25.8	25.4	0.1	0.5	0.4%	2.0%
Information	48.9	48.4	49.1	0.5	-0.2	1.0%	-0.4%
Telecommunications	11.8	11.8	12.0	0.0	-0.2	0.0%	-1.7%
Financial Activities	241.3	240.7	243.9	0.6	-2.6	0.2%	-1.1%
Finance and Insurance	182.1	182.6	182.1	-0.5	0.0	-0.3%	0.0%
Credit Intermediation, Monetary Auth.	85.5	86.4	85.2	-0.9	0.3	-1.0%	0.4%
Financial Investments and Vehicles	23.8	23.8	23.5	0.0	0.3	0.0%	1.3%
Insurance Carriers	72.8	72.4	73.4	0.4	-0.6	0.6%	-0.8%
Real Estate and Rental and Leasing	59.2	58.1	61.8	1.1	-2.6	1.9%	-4.2%
Professional and Business Services	464.2	457.3	463.1	6.9	1.1	1.5%	0.2%
Professional, Scientific and Technical Services	174.4	172.6	179.6	1.8	-5.2	1.0%	-2.9%
Management of Companies and Enterprises	47.7	47.3	45.6	0.4	2.1	0.8%	4.6%
Administrative and Waste Services	242.1	237.4	237.9	4.7	4.2	2.0%	1.8%
Employment Services	110.7	106.3	102.9	4.4	7.8	4.1%	7.6%
Business Support Services	20.5	20.2	21.7	0.3	-1.2	1.5%	-5.5%
Services to Buildings and Dwellings	48.3	47.4	48.4	0.9	-0.1	1.9%	-0.2%
Private Education and Health Services	562.5	559.5	551.1	3.0	11.4	0.5%	2.1%
Private Educational Services	77.8	75.6	76.7	2.2	1.1	2.9%	1.4%
Health Care and Social Assistance	484.7	483.9	474.4	0.8	10.3	0.2%	2.2%
Health Care	408.0	406.9	395.7	1.1	12.3	0.3%	3.1%
Ambulatory Health Care Services	222.0	221.5	217.5	0.5	4.5	0.2%	2.1%
Hospitals	118.8	118.5	113.7	0.3	5.1	0.3%	4.5%
Nursing and Residential Care Facilities	67.2	66.9	64.5	0.3	2.7	0.4%	4.2%
Social Assistance	76.7	77.0	78.7	-0.3	-2.0	-0.4%	-2.5%
Leisure and Hospitality	372.4	364.0	374.5	8.4	-2.1	2.3%	-0.6%
Arts, Entertainment and Recreation	57.8	55.0	56.8	2.8	1.0	5.1%	1.8%
Accommodation and Food Services	314.6	309.0	317.7	5.6	-3.1	1.8%	-1.0%
Accommodation	46.2	45.5	47.0	0.7	-0.8	1.5%	-1.7%
Food Services and Drinking Places	268.4	263.5	270.7	4.9	-2.3	1.9%	-0.8%
Other Services (except Public Administration)	105.4	103.8	102.8	1.6	2.6	1.5%	2.5%
Government	438.2	428.5	446.6	9.7	-8.4	2.3%	-1.9%
Federal Government	55.7	55.2	59.3	0.5	-3.6	0.9%	-6.1%
State Government	94.5	91.8	98.4	2.7	-3.9	2.9%	-4.0%
State Government Education	58.0	55.0	60.8	3.0	-2.8	5.5%	-4.6%
Other State Government	36.5	36.8	37.6	-0.3	-1.1	-0.8%	-2.9%
Local Government	288.0	281.5	288.9	6.5	-0.9	2.3%	-0.3%
Local Government Education	142.7	136.6	145.0	6.1	-2.3	4.5%	-1.6%
Other Local Government	145.3	144.9	143.9	0.4	1.4	0.3%	1.0%

Note: For notes and source, see end of Table 2

Table 2 (Cont.)

Nonfarm Payroll Employment

(in Thousands, Not Seasonally Adjusted)

PHOENIX-MESA-CHANDLER MSA ¹				Amount Change		Percent Change	
	February	January	February	Monthly	Over-Year	Monthly	Over-Year
	2026(b)	2026(c)	2025(c)	January '26 - February '26	February '25 - February '26	January '26 - February '26	February '25 - February '26
Total Nonfarm Payroll Employment^(c,d)	2,485.7	2,460.9	2,480.2	24.8	5.5	1.0%	0.2%
Private Sector	2,223.9	2,205.4	2,216.6	18.5	7.3	0.8%	0.3%
Government	261.8	255.5	263.6	6.3	-1.8	2.5%	-0.7%
Goods-Producing Industries	331.6	327.9	332.9	3.7	-1.3	1.1%	-0.4%
Manufacturing	148.0	147.4	147.9	0.6	0.1	0.4%	0.1%
Durable Goods	108.2	107.9	109.0	0.3	-0.8	0.3%	-0.7%
Computer and Electronic Parts	28.5	28.5	29.5	0.0	-1.0	0.0%	-3.4%
Aerospace Products and Parts	16.9	16.9	17.2	0.0	-0.3	0.0%	-1.7%
Nondurable Goods	39.8	39.5	38.9	0.3	0.9	0.8%	2.3%
Natural Resources and Mining	4.4	4.4	3.9	0.0	0.5	0.0%	12.8%
Construction	179.2	176.1	181.1	3.1	-1.9	1.8%	-1.0%
Buildings	41.3	40.7	39.6	0.6	1.7	1.5%	4.3%
Heavy and Civil Engineering	21.7	21.3	21.7	0.4	0.0	1.9%	0.0%
Specialty Trades	116.2	114.1	119.8	2.1	-3.6	1.8%	-3.0%
Service-Providing Industries	2,154.1	2,133.0	2,147.3	21.1	6.8	1.0%	0.3%
Private Service Providing	1,892.3	1,877.5	1,883.7	14.8	8.6	0.8%	0.5%
Trade, Transportation and Utilities	475.7	478.1	477.9	-2.4	-2.2	-0.5%	-0.5%
Trade	350.5	350.9	353.1	-0.4	-2.6	-0.1%	-0.7%
Wholesale Trade	101.2	101.1	102.9	0.1	-1.7	0.1%	-1.7%
Retail Trade	249.3	249.8	250.2	-0.5	-0.9	-0.2%	-0.4%
Motor Vehicles and Parts	39.1	39.2	39.2	-0.1	-0.1	-0.3%	-0.3%
Building Material, Garden Supply	20.2	20.1	20.6	0.1	-0.4	0.5%	-1.9%
Food and Beverage	42.6	42.5	43.2	0.1	-0.6	0.2%	-1.4%
General Merchandise	54.7	55.2	55.0	-0.5	-0.3	-0.9%	-0.5%
Department Stores	15.6	16.0	15.0	-0.4	0.6	-2.5%	4.0%
Warehouse Clubs, Supercenters	39.1	39.2	40.0	-0.1	-0.9	-0.3%	-2.3%
Transportation, Warehousing & Utilities	125.2	127.2	124.8	-2.0	0.4	-1.6%	0.3%
Utilities	9.6	9.6	9.3	0.0	0.3	0.0%	3.2%
Transportation and warehousing	115.6	117.6	115.5	-2.0	0.1	-1.7%	0.1%
Truck transportation	20.2	20.1	19.6	0.1	0.6	0.5%	3.1%
Information	41.0	40.6	40.9	0.4	0.1	1.0%	0.2%
Telecommunications	9.1	9.1	9.4	0.0	-0.3	0.0%	-3.2%
Financial Activities	209.6	209.2	212.7	0.4	-3.1	0.2%	-1.5%
Finance and Insurance	162.5	163.1	163.0	-0.6	-0.5	-0.4%	-0.3%
Credit Intermediation, Monetary Auth.	78.9	79.8	78.7	-0.9	0.2	-1.1%	0.3%
Financial Investments and Vehicles	20.5	20.5	20.2	0.0	0.3	0.0%	1.5%
Insurance Carriers	63.1	62.8	64.1	0.3	-1.0	0.5%	-1.6%
Real Estate and Rental and Leasing	47.1	46.1	49.7	1.0	-2.6	2.2%	-5.2%
Professional and Business Services	388.1	381.6	385.4	6.5	2.7	1.7%	0.7%
Professional, Scientific and Technical Services	144.5	142.8	147.6	1.7	-3.1	1.2%	-2.1%
Management of Companies and Enterprises	43.2	42.8	41.1	0.4	2.1	0.9%	5.1%
Administrative and Waste Services	200.4	196.0	196.7	4.4	3.7	2.2%	1.9%
Employment Services	94.2	90.7	87.0	3.5	7.2	3.9%	8.3%
Business Support Services	15.6	15.4	16.7	0.2	-1.1	1.3%	-6.6%
Services to Buildings and Dwellings	38.0	37.3	38.3	0.7	-0.3	1.9%	-0.8%
Private Education and Health Services	428.0	425.9	416.8	2.1	11.2	0.5%	2.7%
Private Educational Services	64.8	63.2	63.8	1.6	1.0	2.5%	1.6%
Health Care and Social Assistance	363.2	362.7	353.0	0.5	10.2	0.1%	2.9%
Health Care	303.8	303.1	292.6	0.7	11.2	0.2%	3.8%
Ambulatory Health Care Services	177.3	176.9	172.0	0.4	5.3	0.2%	3.1%
Hospitals	79.5	79.3	75.7	0.2	3.8	0.3%	5.0%
Nursing and Residential Care Facilities	47.0	46.9	44.9	0.1	2.1	0.2%	4.7%
Social Assistance	59.4	59.6	60.4	-0.2	-1.0	-0.3%	-1.7%
Leisure and Hospitality	270.5	264.1	272.5	6.4	-2.0	2.4%	-0.7%
Arts, Entertainment and Recreation	46.6	44.5	46.7	2.1	-0.1	4.7%	-0.2%
Accommodations and Food Services	223.9	219.6	225.8	4.3	-1.9	2.0%	-0.8%
Accommodations	27.9	27.4	28.3	0.5	-0.4	1.8%	-1.4%
Food Services and Drinking Places	196.0	192.2	197.5	3.8	-1.5	2.0%	-0.8%
Other Services (except Public Administration)	79.4	78.0	77.5	1.4	1.9	1.8%	2.5%
Government	261.8	255.5	263.6	6.3	-1.8	2.5%	-0.7%
Federal Government	25.0	24.6	26.1	0.4	-1.1	1.6%	-4.2%
State Government	53.3	51.6	56.4	1.7	-3.1	3.3%	-5.5%
State Government Education	29.1	27.1	30.0	2.0	-0.9	7.4%	-3.0%
Local Government	183.5	179.3	181.1	4.2	2.4	2.3%	1.3%
Local Government Education	94.1	90.5	93.7	3.6	0.4	4.0%	0.4%

Note: 1) Phoenix-Mesa-Chandler Metropolitan Area includes Maricopa and Pinal counties. For other notes and source, see end of Table 2

Table 2 (Cont.)

Nonfarm Payroll Employment

(in Thousands, Not Seasonally Adjusted)

TUCSON MSA ³	February 2026(b)	January 2026(c)	February 2025(c)	Amount Change		Percent Change	
				Monthly	Over-Year	Monthly	Over-Year
				January '26 - February '26	February '25 - February '26	January '26 - February '26	February '25 - February '26
Total Nonfarm Payroll Employment^(c,d)	406.6	403.0	409.8	3.6	-3.2	0.9%	-0.8%
Private Sector	327.0	325.6	328.4	1.4	-1.4	0.4%	-0.4%
Government	79.6	77.4	81.4	2.2	-1.8	2.8%	-2.2%
Goods-Producing Industries	51.9	51.4	52.6	0.5	-0.7	1.0%	-1.3%
Manufacturing	28.7	28.5	28.9	0.2	-0.2	0.7%	-0.7%
Aerospace Products and Parts	14.7	14.7	14.6	0.0	0.1	0.0%	0.7%
Natural Resources and Mining	2.9	2.9	2.7	0.0	0.2	0.0%	7.4%
Construction	20.3	20.0	21.0	0.3	-0.7	1.5%	-3.3%
Service-Providing Industries	354.7	351.6	357.2	3.1	-2.5	0.9%	-0.7%
Private Service Providing	275.1	274.2	275.8	0.9	-0.7	0.3%	-0.3%
Trade, Transportation and Utilities	68.8	69.4	69.8	-0.6	-1.0	-0.9%	-1.4%
Trade	48.9	48.9	50.1	0.0	-1.2	0.0%	-2.4%
Wholesale Trade	8.0	8.0	8.2	0.0	-0.2	0.0%	-2.4%
Retail Trade	40.9	40.9	41.9	0.0	-1.0	0.0%	-2.4%
General Merchandise	9.3	9.2	9.5	0.1	-0.2	1.1%	-2.1%
Department Stores	2.4	2.4	2.5	0.0	-0.1	0.0%	-4.0%
Warehouse Clubs, Supercenters	6.9	6.8	7.0	0.1	-0.1	1.5%	-1.4%
Food and Beverage Stores	32.8	32.7	33.4	0.1	-0.6	0.3%	-1.8%
Transportation, Warehousing & Utilities	19.9	20.5	19.7	-0.6	0.2	-2.9%	1.0%
Information	4.8	4.7	5.0	0.1	-0.2	2.1%	-4.0%
Financial Activities	18.8	18.7	18.5	0.1	0.3	0.5%	1.6%
Professional and Business Services	48.2	47.7	47.9	0.5	0.3	1.0%	0.6%
Professional, Scientific and Technical Services	18.2	18.1	19.4	0.1	-1.2	0.6%	-6.2%
Administrative and Waste Services	27.6	27.2	26.0	0.4	1.6	1.5%	6.2%
Private Education and Health Services	74.5	73.9	73.7	0.6	0.8	0.8%	1.1%
Health Care	56.4	56.3	55.2	0.1	1.2	0.2%	2.2%
Ambulatory Health Care Services	24.5	24.4	24.6	0.1	-0.1	0.4%	-0.4%
Hospitals	19.6	19.6	18.8	0.0	0.8	0.0%	4.3%
Nursing and Residential Care Facilities	12.3	12.3	11.8	0.0	0.5	0.0%	4.2%
Leisure and Hospitality	45.0	45.0	46.5	0.0	-1.5	0.0%	-3.2%
Accommodations and Food Services	39.9	39.7	40.7	0.2	-0.8	0.5%	-2.0%
Accommodations	7.1	7.0	7.3	0.1	-0.2	1.4%	-2.7%
Food Services and Drinking Places	32.8	32.7	33.4	0.1	-0.6	0.3%	-1.8%
Other Services (except Public Administration)	15.0	14.8	14.4	0.2	0.6	1.4%	4.2%
Government	79.6	77.4	81.4	2.2	-1.8	2.8%	-2.2%
Federal Government	11.9	11.8	12.9	0.1	-1.0	0.8%	-7.8%
State Government	26.2	25.2	26.8	1.0	-0.6	4.0%	-2.2%
State Government Education	21.5	20.4	22.3	1.1	-0.8	5.4%	-3.6%
Local Government	41.5	40.4	41.7	1.1	-0.2	2.7%	-0.5%
Local Government Education	21.7	20.5	22.0	1.2	-0.3	5.9%	-1.4%

Note: 3) Tucson Metropolitan Area includes all of Pima County. For other notes and source, see end of Table 2.

Table 2 (Cont.)

Nonfarm Payroll Employment

(in Thousands, Not Seasonally Adjusted)

YUMA MSA ⁴	February 2026(b)	January 2026(c)	February 2025(c)	Amount Change		Percent Change	
				Monthly	Over-Year	Monthly	Over-Year
				January '26 - February '26	February '25 - February '26	January '26 - February '26	February '25 - February '26
Total Nonfarm Payroll Employment^(c,d)	60.9	60.9	64.1	0.0	-3.2	0.0%	-5.0%
Private Sector	45.4	45.4	48.2	0.0	-2.8	0.0%	-5.8%
Government	15.5	15.5	15.9	0.0	-0.4	0.0%	-2.5%
Goods-Producing Industries	6.6	6.7	7.1	-0.1	-0.5	-1.5%	-7.0%
Manufacturing	2.7	2.7	3.0	0.0	-0.3	0.0%	-10.0%
Mining and Construction	3.9	4.0	4.1	-0.1	-0.2	-2.5%	-4.9%
Service-Providing Industries	54.3	54.2	57.0	0.1	-2.7	0.2%	-4.7%
Private Service Providing	38.8	38.7	41.1	0.1	-2.3	0.3%	-5.6%
Trade, Transportation and Utilities	12.3	12.4	13.3	-0.1	-1.0	-0.8%	-7.5%
Information	0.4	0.4	0.4	0.0	0.0	0.0%	0.0%
Financial Activities	2.0	2.0	2.2	0.0	-0.2	0.0%	-9.1%
Professional and Business Services	5.5	5.5	6.6	0.0	-1.1	0.0%	-16.7%
Private Education and Health Services	9.5	9.4	9.3	0.1	0.2	1.1%	2.2%
Leisure and Hospitality	7.2	7.1	7.3	0.1	-0.1	1.4%	-1.4%
Other Services (except Public Administration)	1.9	1.9	2.0	0.0	-0.1	0.0%	-5.0%
Government	15.5	15.5	15.9	0.0	-0.4	0.0%	-2.5%
Federal Government	3.7	3.7	3.9	0.0	-0.2	0.0%	-5.1%
State and Local Government	11.8	11.8	12.0	0.0	-0.2	0.0%	-1.7%

Note: 4) Yuma Metropolitan Area includes all of Yuma County. For other notes and source, see end of Table 2

FLAGSTAFF MSA ⁵	February 2026(b)	January 2026(c)	February 2025(c)	Amount Change		Percent Change	
				Monthly	Over-Year	Monthly	Over-Year
				January '26 - February '26	February '25 - February '26	January '26 - February '26	February '25 - February '26
Total Nonfarm Payroll Employment^(c,d)	70.5	70.3	71.3	0.2	-0.8	0.3%	-1.1%
Private Sector	52.5	52.3	51.9	0.2	0.6	0.4%	1.2%
Government	18.0	18.0	19.4	0.0	-1.4	0.0%	-7.2%
Goods-Producing Industries	6.8	6.8	7.2	0.0	-0.4	0.0%	-5.6%
Manufacturing	3.7	3.7	4.0	0.0	-0.3	0.0%	-7.5%
Mining and Construction	3.1	3.1	3.2	0.0	-0.1	0.0%	-3.1%
Service-Providing Industries	63.7	63.5	64.1	0.2	-0.4	0.3%	-0.6%
Private Service Providing	45.7	45.5	44.7	0.2	1.0	0.4%	2.2%
Trade, Transportation and Utilities	9.7	9.8	9.8	-0.1	-0.1	-1.0%	-1.0%
Information	0.5	0.5	0.5	0.0	0.0	0.0%	0.0%
Financial Activities	1.9	1.9	1.8	0.0	0.1	0.0%	5.6%
Professional and Business Services	4.3	4.3	4.2	0.0	0.1	0.0%	2.4%
Private Education and Health Services	10.8	10.7	10.4	0.1	0.4	0.9%	3.8%
Leisure and Hospitality	16.7	16.5	16.3	0.2	0.4	1.2%	2.5%
Other Services (except Public Administration)	1.8	1.8	1.7	0.0	0.1	0.0%	5.9%
Government	18.0	18.0	19.4	0.0	-1.4	0.0%	-7.2%
Federal Government	2.4	2.4	2.6	0.0	-0.2	0.0%	-7.7%
State and Local Government	15.6	15.6	16.8	0.0	-1.2	0.0%	-7.1%

Notes: 5) Flagstaff Metropolitan Area includes all of Coconino County. For other notes and source, see end of Table 2

Table 2 (Cont.)

Nonfarm Payroll Employment

(in Thousands, Not Seasonally Adjusted)

PRESCOTT-PRESCOTT VALLEY MSA ⁶	February 2026(b)	January 2026(c)	February 2025(c)	Amount Change		Percent Change	
				Monthly	Over-Year	Monthly	Over-Year
				January '26 - February '26	February '25 - February '26	January '26 - February '26	February '25 - February '26
Total Nonfarm Payroll Employment^(c,d)	72.0	71.6	73.1	0.4	-1.1	0.6%	-1.5%
Private Sector	60.2	60.2	61.2	0.0	-1.0	0.0%	-1.6%
Government	11.8	11.4	11.9	0.4	-0.1	3.5%	-0.8%
Goods-Producing Industries	10.5	10.7	10.8	-0.2	-0.3	-1.9%	-2.8%
Manufacturing	3.4	3.4	3.5	0.0	-0.1	0.0%	-2.9%
Mining and Construction	7.1	7.3	7.3	-0.2	-0.2	-2.7%	-2.7%
Service-Providing Industries	61.5	60.9	62.3	0.6	-0.8	1.0%	-1.3%
Private Service Providing	49.7	49.5	50.4	0.2	-0.7	0.4%	-1.4%
Trade, Transportation and Utilities	13.6	13.8	13.7	-0.2	-0.1	-1.4%	-0.7%
Information	0.5	0.5	0.5	0.0	0.0	0.0%	0.0%
Financial Activities	3.0	3.0	3.0	0.0	0.0	0.0%	0.0%
Professional and Business Services	6.5	6.5	7.0	0.0	-0.5	0.0%	-7.1%
Private Education and Health Services	13.5	13.4	13.3	0.1	0.2	0.7%	1.5%
Leisure and Hospitality	9.9	9.7	10.2	0.2	-0.3	2.1%	-2.9%
Other Services (except Public Administration)	2.7	2.6	2.7	0.1	0.0	3.8%	0.0%
Government	11.8	11.4	11.9	0.4	-0.1	3.5%	-0.8%
Federal Government	1.8	1.8	1.9	0.0	-0.1	0.0%	-5.3%
State and Local Government	10.0	9.6	10.0	0.4	0.0	4.2%	0.0%

Note: 6) Prescott Metropolitan Area includes all of Yavapai County. For other notes and source, see end of Table 2

LAKE HAVASU CITY-KINGMAN MSA⁷

LAKE HAVASU CITY-KINGMAN MSA ⁷	February 2026(b)	January 2026(c)	February 2025(c)	Amount Change		Percent Change	
				Monthly	Over-Year	Monthly	Over-Year
				January '26 - February '26	February '25 - February '26	January '26 - February '26	February '25 - February '26
Total Nonfarm Payroll Employment^(c,d)	57.1	56.7	58.4	0.4	-1.3	0.7%	-2.2%
Private Sector	48.3	48.0	49.6	0.3	-1.3	0.6%	-2.6%
Government	8.8	8.7	8.8	0.1	0.0	1.1%	0.0%
Goods-Producing Industries	7.5	7.6	8.3	-0.1	-0.8	-1.3%	-9.6%
Manufacturing	2.8	2.9	3.1	-0.1	-0.3	-3.4%	-9.7%
Mining and Construction	4.7	4.7	5.2	0.0	-0.5	0.0%	-9.6%
Service-Providing Industries	49.6	49.1	50.1	0.5	-0.5	1.0%	-1.0%
Private Service Providing	40.8	40.4	41.3	0.4	-0.5	1.0%	-1.2%
Trade, Transportation and Utilities	14.3	14.3	14.6	0.0	-0.3	0.0%	-2.1%
Information	0.5	0.5	0.5	0.0	0.0	0.0%	0.0%
Financial Activities	2.0	2.0	1.9	0.0	0.1	0.0%	5.3%
Professional and Business Services	4.1	4.0	4.2	0.1	-0.1	2.5%	-2.4%
Private Education and Health Services	9.9	9.8	10.1	0.1	-0.2	1.0%	-2.0%
Leisure and Hospitality	8.0	7.8	8.1	0.2	-0.1	2.6%	-1.2%
Other Services (except Public Administration)	2.0	2.0	1.9	0.0	0.1	0.0%	5.3%
Government	8.8	8.7	8.8	0.1	0.0	1.1%	0.0%
Federal Government	0.5	0.5	0.5	0.0	0.0	0.0%	0.0%
State and Local Government	8.3	8.2	8.3	0.1	0.0	1.2%	0.0%

Note: 7) Lake Havasu City-Kingman Metropolitan Area includes all of Mohave County
For other notes and source, see next page

Table 2 (Cont.)

Nonfarm Payroll Employment

(in Thousands, Not Seasonally Adjusted)

SIERRA VISTA-DOUGLAS MSA ⁸				Amount Change		Percent Change	
	February 2026(b)	January 2026(c)	February 2025(c)	Monthly	Over-Year	Monthly	Over-Year
				January '26 - February '26	February '25 - February '26	January '26 - February '26	February '25 - February '26
Total Nonfarm Payroll Employment^(c,d)	33.2	33.0	34.8	0.2	-1.6	0.6%	-4.6%
Private Sector	23.1	22.9	24.0	0.2	-0.9	0.9%	-3.8%
Government	10.1	10.1	10.8	0.0	-0.7	0.0%	-6.5%
Goods-Producing Industries	2.6	2.7	2.7	-0.1	-0.1	-3.7%	-3.7%
Manufacturing	0.6	0.6	0.6	0.0	0.0	0.0%	0.0%
Mining and Construction	2.0	2.1	2.1	-0.1	-0.1	-4.8%	-4.8%
Service-Providing Industries	30.6	30.3	32.1	0.3	-1.5	1.0%	-4.7%
Private Service Providing	20.5	20.2	21.3	0.3	-0.8	1.5%	-3.8%
Trade, Transportation and Utilities	6.4	6.4	6.5	0.0	-0.1	0.0%	-1.5%
Information	0.7	0.7	0.9	0.0	-0.2	0.0%	-22.2%
Financial Activities	1.0	1.0	1.0	0.0	0.0	0.0%	0.0%
Professional and Business Services	3.5	3.4	3.9	0.1	-0.4	2.9%	-10.3%
Private Education and Health Services	4.7	4.6	4.7	0.1	0.0	2.2%	0.0%
Leisure and Hospitality	3.4	3.4	3.5	0.0	-0.1	0.0%	-2.9%
Other Services (except Public Administration)	0.8	0.7	0.8	0.1	0.0	14.3%	0.0%
Government	10.1	10.1	10.8	0.0	-0.7	0.0%	-6.5%
Federal Government	3.7	3.7	4.3	0.0	-0.6	0.0%	-14.0%
State and Local Government	6.4	6.4	6.5	0.0	-0.1	0.0%	-1.5%

Note: 8) Sierra Vista-Douglas Metropolitan Area includes all of Cochise County

Other notes and sources:

- a) Nonfarm employment at the state and substate level is produced from the monthly establishment survey by the Current Employment Statistics (CES) program of the Arizona Office of Employment and Population Statistics, in cooperation with U.S. Dept. of Labor, Bureau of Labor Statistics.

For more information on the establishment survey, see: <http://www.bls.gov/bls/empsitquickguide.htm>

- b) Preliminary and subject to revision the following month
 c) Revised
 d) By place of work: does not include agricultural workers, self-employed, unpaid family members, and domestic workers
 e) Detail may not add up exactly due to rounding
 MSA — Metropolitan Statistical Area
 NA — Not Available

Source: Prepared by the Arizona Office of Economic Opportunity, in cooperation with the U.S. Dept. of Labor, Bureau of Labor Statistics

Labor Force

Prepared in Cooperation with the U.S. Department of Labor, Bureau of Labor Statistics
Arizona Office of Economic Opportunity

2026

Apache County

	JAN	FEB	MAR	APR	MAY	JUN	JUL	AUG	SEP	OCT	NOV	DEC	AVG
Civilian Labor Force	19,495	18,982											
Employment	17,758	17,343											
Unemployment	1,737	1,639											
Unemployment rate	8.9	8.6											

Adjusted to the Current Population Survey (CPS 2025) to reflect place of residence, rev. 4/10/2026

Equal Opportunity Employer/ Program available in alternative format/ reasonable accommodations: 602-771-1110, TDD 1-800-367-8939

Labor Force

Prepared in Cooperation with the U.S. Department of Labor, Bureau of Labor Statistics
Arizona Office of Economic Opportunity

2026

Cochise County(Sierra-Vista Douglas MSA)

	JAN	FEB	MAR	APR	MAY	JUN	JUL	AUG	SEP	OCT	NOV	DEC	AVG
Civilian Labor Force	46,678	45,537											
Employment	43,821	42,760											
Unemployment	2,857	2,777											
Unemployment rate	6.1	6.1											

Adjusted to the Current Population Survey (CPS 2025) to reflect place of residence, rev. 4/10/2026

Equal Opportunity Employer/ Program available in alternative format/ reasonable accommodations: 602-771-1110, TDD 1-800-367-8939

Labor Force

Prepared in Cooperation with the U.S. Department of Labor, Bureau of Labor Statistics
Arizona Office of Economic Opportunity

2026

Coconino County(Flagstaff MSA)

	JAN	FEB	MAR	APR	MAY	JUN	JUL	AUG	SEP	OCT	NOV	DEC	AVG
Civilian Labor Force	76,091	74,258											
Employment	71,654	70,092											
Unemployment	4,437	4,166											
Unemployment rate	5.8	5.6											

Adjusted to the Current Population Survey (CPS 2025) to reflect place of residence, rev. 4/10/2026

Equal Opportunity Employer/ Program available in alternative format/ reasonable accommodations: 602-771-1110, TDD 1-800-367-8939

Labor Force

Prepared in Cooperation with the U.S. Department of Labor, Bureau of Labor Statistics
Arizona Office of Economic Opportunity

2026

Gila County

	JAN	FEB	MAR	APR	MAY	JUN	JUL	AUG	SEP	OCT	NOV	DEC	AVG
Civilian Labor Force	22,554	22,094											
Employment	21,488	21,063											
Unemployment	1,066	1,031											
Unemployment rate	4.7	4.7											

Adjusted to the Current Population Survey (CPS 2025) to reflect place of residence, rev. 4/10/2026

Equal Opportunity Employer/ Program available in alternative format/ reasonable accommodations: 602-771-1110, TDD 1-800-367-8939

Labor Force

Prepared in Cooperation with the U.S. Department of Labor, Bureau of Labor Statistics
Arizona Office of Economic Opportunity

2026

Graham County

	JAN	FEB	MAR	APR	MAY	JUN	JUL	AUG	SEP	OCT	NOV	DEC	AVG
Civilian Labor Force	17,007	16,964											
Employment	16,169	16,183											
Unemployment	838	781											
Unemployment rate	4.9	4.6											

Adjusted to the Current Population Survey (CPS 2025) to reflect place of residence, rev. 4/10/2026

Equal Opportunity Employer/ Program available in alternative format/ reasonable accommodations: 602-771-1110, TDD 1-800-367-8939

Labor Force

Prepared in Cooperation with the U.S. Department of Labor, Bureau of Labor Statistics
Arizona Office of Economic Opportunity

2026

Greenlee County

	JAN	FEB	MAR	APR	MAY	JUN	JUL	AUG	SEP	OCT	NOV	DEC	AVG
Civilian Labor Force	5,242	5,129											
Employment	5,069	4,968											
Unemployment	173	161											
Unemployment rate	3.3	3.1											

Adjusted to the Current Population Survey (CPS 2025) to reflect place of residence, rev. 4/10/2026

Equal Opportunity Employer/ Program available in alternative format/ reasonable accommodations: 602-771-1110, TDD 1-800-367-8939

Labor Force

Prepared in Cooperation with the U.S. Department of Labor, Bureau of Labor Statistics
Arizona Office of Economic Opportunity

2026

La Paz County

	JAN	FEB	MAR	APR	MAY	JUN	JUL	AUG	SEP	OCT	NOV	DEC	AVG
Civilian Labor Force	6,217	6,045											
Employment	5,793	5,645											
Unemployment	424	400											
Unemployment rate	6.8	6.6											

Adjusted to the Current Population Survey (CPS 2025) to reflect place of residence, rev. 4/10/2026

Equal Opportunity Employer/ Program available in alternative format/ reasonable accommodations: 602-771-1110, TDD 1-800-367-8939

Labor Force

Prepared in Cooperation with the U.S. Department of Labor, Bureau of Labor Statistics
Arizona Office of Economic Opportunity

2026

Maricopa County

	JAN	FEB	MAR	APR	MAY	JUN	JUL	AUG	SEP	OCT	NOV	DEC	AVG
Civilian Labor Force	2,521,312	2,483,357											
Employment	2,413,108	2,379,484											
Unemployment	108,204	103,873											
Unemployment rate	4.3	4.2											

Adjusted to the Current Population Survey (CPS 2025) to reflect place of residence, rev. 4/10/2026

Equal Opportunity Employer/ Program available in alternative format/ reasonable accommodations: 602-771-1110, TDD 1-800-367-8939

Labor Force

Prepared in Cooperation with the U.S. Department of Labor, Bureau of Labor Statistics
Arizona Office of Economic Opportunity

2026

Mohave County(Lake Havasu City-Kingman MSA)

	JAN	FEB	MAR	APR	MAY	JUN	JUL	AUG	SEP	OCT	NOV	DEC	AVG
Civilian Labor Force	88,650	86,578											
Employment	83,271	81,299											
Unemployment	5,379	5,279											
Unemployment rate	6.1	6.1											

Adjusted to the Current Population Survey (CPS 2025) to reflect place of residence, rev. 4/10/2026

Equal Opportunity Employer/ Program available in alternative format/ reasonable accommodations: 602-771-1110, TDD 1-800-367-8939

Labor Force

Prepared in Cooperation with the U.S. Department of Labor, Bureau of Labor Statistics
Arizona Office of Economic Opportunity

2026

Navajo County

	JAN	FEB	MAR	APR	MAY	JUN	JUL	AUG	SEP	OCT	NOV	DEC	AVG
Civilian Labor Force	38,026	36,958											
Employment	35,199	34,285											
Unemployment	2,827	2,673											
Unemployment rate	7.4	7.2											

Adjusted to the Current Population Survey (CPS 2025) to reflect place of residence, rev. 4/10/2026

Equal Opportunity Employer/ Program available in alternative format/ reasonable accommodations: 602-771-1110, TDD 1-800-367-8939

Labor Force

Prepared in Cooperation with the U.S. Department of Labor, Bureau of Labor Statistics
Arizona Office of Economic Opportunity

2026

Pima County(Tucson MSA)

	JAN	FEB	MAR	APR	MAY	JUN	JUL	AUG	SEP	OCT	NOV	DEC	AVG
Civilian Labor Force	500,994	491,716											
Employment	475,527	467,377											
Unemployment	25,467	24,339											
Unemployment rate	5.1	4.9											

Adjusted to the Current Population Survey (CPS 2025) to reflect place of residence, rev. 4/10/2026

Equal Opportunity Employer/ Program available in alternative format/ reasonable accommodations: 602-771-1110, TDD 1-800-367-8939

Labor Force

Prepared in Cooperation with the U.S. Department of Labor, Bureau of Labor Statistics
Arizona Office of Economic Opportunity

2026

Pinal County

	JAN	FEB	MAR	APR	MAY	JUN	JUL	AUG	SEP	OCT	NOV	DEC	AVG
Civilian Labor Force	229,878	226,376											
Employment	218,367	215,289											
Unemployment	11,511	11,087											
Unemployment rate	5.0	4.9											

Adjusted to the Current Population Survey (CPS 2025) to reflect place of residence, rev. 4/10/2026

Equal Opportunity Employer/ Program available in alternative format/ reasonable accommodations: 602-771-1110, TDD 1-800-367-8939

Labor Force

Prepared in Cooperation with the U.S. Department of Labor, Bureau of Labor Statistics
Arizona Office of Economic Opportunity

2026

Santa Cruz County

	JAN	FEB	MAR	APR	MAY	JUN	JUL	AUG	SEP	OCT	NOV	DEC	AVG
Civilian Labor Force	21,854	21,297											
Employment	20,367	19,887											
Unemployment	1,487	1,410											
Unemployment rate	6.8	6.6											

Adjusted to the Current Population Survey (CPS 2025) to reflect place of residence, rev. 4/10/2026

Equal Opportunity Employer/ Program available in alternative format/ reasonable accommodations: 602-771-1110, TDD 1-800-367-8939

Labor Force

Prepared in Cooperation with the U.S. Department of Labor, Bureau of Labor Statistics
Arizona Office of Economic Opportunity

2026

Yavapai County(Prescott-Prescott Valley MSA)

	JAN	FEB	MAR	APR	MAY	JUN	JUL	AUG	SEP	OCT	NOV	DEC	AVG
Civilian Labor Force	107,002	104,222											
Employment	101,768	99,178											
Unemployment	5,234	5,044											
Unemployment rate	4.9	4.8											

Adjusted to the Current Population Survey (CPS 2025) to reflect place of residence, rev. 4/10/2026

Equal Opportunity Employer/ Program available in alternative format/ reasonable accommodations: 602-771-1110, TDD 1-800-367-8939

Labor Force

Prepared in Cooperation with the U.S. Department of Labor, Bureau of Labor Statistics
Arizona Office of Economic Opportunity

2026

Yuma County(Yuma MSA)

	JAN	FEB	MAR	APR	MAY	JUN	JUL	AUG	SEP	OCT	NOV	DEC	AVG
Civilian Labor Force	97,944	95,349											
Employment	86,757	84,173											
Unemployment	11,187	11,176											
Unemployment rate	11.4	11.7											

Adjusted to the Current Population Survey (CPS 2025) to reflect place of residence, rev. 4/10/2026

Equal Opportunity Employer/ Program available in alternative format/ reasonable accommodations: 602-771-1110, TDD 1-800-367-8939

Nonfarm Employment

Prepared in Cooperation with the U.S. Department of Labor, Bureau of Labor Statistics
Arizona Office of Economic Opportunity

2026

Apache County

	JAN	FEB	MAR	APR	MAY	JUN	JUL	AUG	SEP	OCT	NOV	DEC	AVG
Total Nonfarm	17,625	17,600											
Total Private	7,600	7,575											
Goods Producing	950	950											
Service-Providing	16,675	16,650											
Private Service-Providing	6,650	6,625											
Trade, Transportation, and Utilities	1,825	1,800											
Other Private Service-Providing	4,825	4,825											
Government	10,025	10,025											
Federal Government	2,350	2,350											
State and Local Government	7,675	7,675											

Benchmark year 2025, quarter 1, rev. 4/13/2026

Equal Opportunity Employer/ Program available in alternative format/ reasonable accommodations: 602-771-1110, TDD 1-800-367-8939

Nonfarm Employment

Prepared in Cooperation with the U.S. Department of Labor, Bureau of Labor Statistics

Arizona Office of Economic Opportunity

2026

Cochise County(Sierra-Vista Douglas MSA)

	JAN	FEB	MAR	APR	MAY	JUN	JUL	AUG	SEP	OCT	NOV	DEC	AVG
Total Nonfarm	33,000	33,200											
Total Private	22,900	23,100											
Goods Producing	2,700	2,600											
Mining and Construction	2,100	2,000											
Manufacturing	600	600											
Service-Providing	30,300	30,600											
Private Service-Providing	20,200	20,500											
Trade, Transportation, and Utilities	6,400	6,400											
Information	700	700											
Financial Activities	1,000	1,000											
Professional and Business Services	3,400	3,500											
Private Educ. and Health Services	4,600	4,700											
Leisure and Hospitality	3,400	3,400											
Other Services	700	800											
Government	10,100	10,100											
Federal Government	3,700	3,700											
State and Local Government	6,400	6,400											

Benchmark year 2025, quarter 1, rev. 4/13/2026

Equal Opportunity Employer/ Program available in alternative format/ reasonable accomodations: 602-771-1110, TDD 1-800-367-8939

Nonfarm Employment

Prepared in Cooperation with the U.S. Department of Labor, Bureau of Labor Statistics

Arizona Office of Economic Opportunity

2026

Coconino County(Flagstaff MSA)

	JAN	FEB	MAR	APR	MAY	JUN	JUL	AUG	SEP	OCT	NOV	DEC	AVG
Total Nonfarm	70,300	70,500											
Total Private	52,300	52,500											
Goods Producing	6,800	6,800											
Mining and Construction	3,100	3,100											
Manufacturing	3,700	3,700											
Service-Providing	63,500	63,700											
Private Service-Providing	45,500	45,700											
Trade, Transportation, and Utilities	9,800	9,700											
Information	500	500											
Financial Activities	1,900	1,900											
Professional and Business Services	4,300	4,300											
Private Educ. and Health Services	10,700	10,800											
Leisure and Hospitality	16,500	16,700											
Other Services	1,800	1,800											
Government	18,000	18,000											
Federal Government	2,400	2,400											
State and Local Government	15,600	15,600											

Benchmark year 2025, quarter 1, rev. 4/13/2026

Equal Opportunity Employer/ Program available in alternative format/ reasonable accomodations: 602-771-1110, TDD 1-800-367-8939

Nonfarm Employment

Prepared in Cooperation with the U.S. Department of Labor, Bureau of Labor Statistics

Arizona Office of Economic Opportunity

2026

Gila County

	JAN	FEB	MAR	APR	MAY	JUN	JUL	AUG	SEP	OCT	NOV	DEC	AVG
Total Nonfarm	16,150	16,325											
Total Private	10,675	10,800											
Goods Producing	2,825	2,825											
Service-Providing	13,325	13,500											
Private Service-Providing	7,850	7,975											
Trade, Transportation, and Utilities	2,400	2,400											
Other Private Service-Providing	5,450	5,575											
Government	5,475	5,525											
Federal Government	250	250											
State and Local Government	5,225	5,275											

Benchmark year 2025, quarter 1, rev. 4/13/2026

Equal Opportunity Employer/ Program available in alternative format/ reasonable accommodations: 602-771-1110, TDD 1-800-367-8939

Nonfarm Employment

Prepared in Cooperation with the U.S. Department of Labor, Bureau of Labor Statistics

Arizona Office of Economic Opportunity

2026

Graham County

	JAN	FEB	MAR	APR	MAY	JUN	JUL	AUG	SEP	OCT	NOV	DEC	AVG
Total Nonfarm	10,675	11,050											
Total Private	8,000	8,125											
Goods Producing	2,350	2,375											
Service-Providing	8,325	8,675											
Private Service-Providing	5,650	5,750											
Trade, Transportation, and Utilities	2,025	2,025											
Other Private Service-Providing	3,625	3,725											
Government	2,675	2,925											
Federal Government	375	375											
State and Local Government	2,300	2,550											

Benchmark year 2025, quarter 1, rev. 4/13/2026

Equal Opportunity Employer/ Program available in alternative format/ reasonable accommodations: 602-771-1110, TDD 1-800-367-8939

Nonfarm Employment

Prepared in Cooperation with the U.S. Department of Labor, Bureau of Labor Statistics

Arizona Office of Economic Opportunity

2026

Greenlee County

	JAN	FEB	MAR	APR	MAY	JUN	JUL	AUG	SEP	OCT	NOV	DEC	AVG
Total Nonfarm	5,775	5,750											
Total Private	5,225	5,200											
Goods Producing	4,325	4,300											
Service-Providing	1,450	1,450											
Private Service-Providing	900	900											
Trade, Transportation, and Utilities	500	475											
Other Private Service-Providing	400	425											
Government	550	550											
Federal Government	50	25											
State and Local Government	500	525											

Benchmark year 2025, quarter 1, rev. 4/13/2026

Equal Opportunity Employer/ Program available in alternative format/ reasonable accommodations: 602-771-1110, TDD 1-800-367-8939

Nonfarm Employment

Prepared in Cooperation with the U.S. Department of Labor, Bureau of Labor Statistics

Arizona Office of Economic Opportunity

2026

La Paz County

	JAN	FEB	MAR	APR	MAY	JUN	JUL	AUG	SEP	OCT	NOV	DEC	AVG
Total Nonfarm	6,025	6,025											
Total Private	3,950	3,950											
Goods Producing	250	225											
Service-Providing	5,775	5,800											
Private Service-Providing	3,700	3,725											
Trade, Transportation, and Utilities	1,900	1,900											
Other Private Service-Providing	1,800	1,825											
Government	2,075	2,075											
Federal Government	300	300											
State and Local Government	1,775	1,775											

Benchmark year 2025, quarter 1, rev. 4/13/2026

Equal Opportunity Employer/ Program available in alternative format/ reasonable accommodations: 602-771-1110, TDD 1-800-367-8939

Nonfarm Employment

Prepared in Cooperation with the U.S. Department of Labor, Bureau of Labor Statistics

Arizona Office of Economic Opportunity

2026

Maricopa County

	JAN	FEB	MAR	APR	MAY	JUN	JUL	AUG	SEP	OCT	NOV	DEC	AVG
Total Nonfarm	2,376,900	2,401,100											
Total Private	2,142,300	2,160,400											
Goods Producing	312,800	316,400											
Mining and Construction	173,300	176,300											
Manufacturing	139,500	140,100											
Service-Providing	2,064,100	2,084,700											
Private Service-Providing	1,829,500	1,844,000											
Trade, Transportation, and Utilities	462,700	460,200											
Information	39,900	40,200											
Financial Activities	206,600	207,200											
Professional and Business Services	373,200	379,500											
Private Educ. and Health Services	417,100	419,400											
Leisure and Hospitality	254,300	260,500											
Other Services	75,700	77,000											
Government	234,600	240,700											
Federal Government	23,000	23,400											
State and Local Government	211,600	217,300											

Benchmark year 2025, quarter 1, rev. 4/13/2026

Equal Opportunity Employer/ Program available in alternative format/ reasonable accomodations: 602-771-1110, TDD 1-800-367-8939

Nonfarm Employment

Prepared in Cooperation with the U.S. Department of Labor, Bureau of Labor Statistics
 Arizona Office of Economic Opportunity

2026

Mohave County(Lake Havasu City-Kingman MSA)

	JAN	FEB	MAR	APR	MAY	JUN	JUL	AUG	SEP	OCT	NOV	DEC	AVG
Total Nonfarm	56,700	57,100											
Total Private	48,000	48,300											
Goods Producing	7,600	7,500											
Mining and Construction	4,700	4,700											
Manufacturing	2,900	2,800											
Service-Providing	49,100	49,600											
Private Service-Providing	40,400	40,800											
Trade, Transportation, and Utilities	14,300	14,300											
Information	500	500											
Financial Activities	2,000	2,000											
Professional and Business Services	4,000	4,100											
Private Educ. and Health Services	9,800	9,900											
Leisure and Hospitality	7,800	8,000											
Other Services	2,000	2,000											
Government	8,700	8,800											
Federal Government	500	500											
State and Local Government	8,200	8,300											

Benchmark year 2025, quarter 1, rev. 4/13/2026

Equal Opportunity Employer/ Program available in alternative format/ reasonable accomodations: 602-771-1110, TDD 1-800-367-8939

Nonfarm Employment

Prepared in Cooperation with the U.S. Department of Labor, Bureau of Labor Statistics

Arizona Office of Economic Opportunity

2026

Navajo County

	JAN	FEB	MAR	APR	MAY	JUN	JUL	AUG	SEP	OCT	NOV	DEC	AVG
Total Nonfarm	28,125	28,150											
Total Private	18,700	18,725											
Goods Producing	2,300	2,325											
Mining and Construction	1,900	1,925											
Manufacturing	400	400											
Service-Providing	25,825	25,825											
Private Service-Providing	16,400	16,400											
Trade, Transportation, and Utilities	5,050	5,000											
Information	200	200											
Financial Activities	600	600											
Professional and Business Services	1,175	1,175											
Private Educ. and Health Services	4,900	4,925											
Leisure and Hospitality	3,800	3,825											
Other Services	675	675											
Government	9,425	9,425											
Federal Government	1,900	1,925											
State and Local Government	7,525	7,500											

Benchmark year 2025, quarter 1, rev. 4/13/2026

Equal Opportunity Employer/ Program available in alternative format/ reasonable accomodations: 602-771-1110, TDD 1-800-367-8939

Nonfarm Employment

Prepared in Cooperation with the U.S. Department of Labor, Bureau of Labor Statistics

Arizona Office of Economic Opportunity

2026

Pima County(Tucson MSA)

	JAN	FEB	MAR	APR	MAY	JUN	JUL	AUG	SEP	OCT	NOV	DEC	AVG
Total Nonfarm	403,000	406,600											
Total Private	325,600	327,000											
Goods Producing	51,400	51,900											
Mining and Construction	22,900	23,200											
Manufacturing	28,500	28,700											
Service-Providing	351,600	354,700											
Private Service-Providing	274,200	275,100											
Trade, Transportation, and Utilities	69,400	68,800											
Information	4,700	4,800											
Financial Activities	18,700	18,800											
Professional and Business Services	47,700	48,200											
Private Educ. and Health Services	73,900	74,500											
Leisure and Hospitality	45,000	45,000											
Other Services	14,800	15,000											
Government	77,400	79,600											
Federal Government	11,800	11,900											
State and Local Government	65,600	67,700											

Benchmark year 2025, quarter 1, rev. 4/13/2026

Equal Opportunity Employer/ Program available in alternative format/ reasonable accomodations: 602-771-1110, TDD 1-800-367-8939

Nonfarm Employment

Prepared in Cooperation with the U.S. Department of Labor, Bureau of Labor Statistics

Arizona Office of Economic Opportunity

2026

Pinal County

	JAN	FEB	MAR	APR	MAY	JUN	JUL	AUG	SEP	OCT	NOV	DEC	AVG
Total Nonfarm	79,750	80,650											
Total Private	58,950	59,650											
Goods Producing	14,475	14,625											
Mining and Construction	6,825	6,925											
Manufacturing	7,650	7,700											
Service-Providing	65,275	66,025											
Private Service-Providing	44,475	45,025											
Trade, Transportation, and Utilities	14,875	14,925											
Information	650	650											
Financial Activities	2,050	2,075											
Professional and Business Services	7,600	7,650											
Private Educ. and Health Services	7,850	7,900											
Leisure and Hospitality	9,250	9,575											
Other Services	2,200	2,250											
Government	20,800	21,000											
Federal Government	1,450	1,425											
State and Local Government	19,350	19,575											

Benchmark year 2025, quarter 1, rev. 4/13/2026

Equal Opportunity Employer/ Program available in alternative format/ reasonable accommodations: 602-771-1110, TDD 1-800-367-8939

Nonfarm Employment

Prepared in Cooperation with the U.S. Department of Labor, Bureau of Labor Statistics
Arizona Office of Economic Opportunity

2026

Santa Cruz County

	JAN	FEB	MAR	APR	MAY	JUN	JUL	AUG	SEP	OCT	NOV	DEC	AVG
Total Nonfarm	14,375	14,450											
Total Private	10,325	10,400											
Goods Producing	950	975											
Service-Providing	13,425	13,425											
Private Service-Providing	9,375	9,425											
Trade, Transportation, and Utilities	6,050	6,050											
Other Private Service-Providing	3,325	3,375											
Government	4,050	4,050											
Federal Government	1,700	1,700											
State and Local Government	2,350	2,350											

Benchmark year 2025, quarter 1, rev. 4/13/2026

Equal Opportunity Employer/ Program available in alternative format/ reasonable accommodations: 602-771-1110, TDD 1-800-367-8939

Nonfarm Employment

Prepared in Cooperation with the U.S. Department of Labor, Bureau of Labor Statistics

Arizona Office of Economic Opportunity

2026

Yavapai County(Prescott-Prescott Valley MSA)

	JAN	FEB	MAR	APR	MAY	JUN	JUL	AUG	SEP	OCT	NOV	DEC	AVG
Total Nonfarm	71,600	72,000											
Total Private	60,200	60,200											
Goods Producing	10,700	10,500											
Mining and Construction	7,300	7,100											
Manufacturing	3,400	3,400											
Service-Providing	60,900	61,500											
Private Service-Providing	49,500	49,700											
Trade, Transportation, and Utilities	13,800	13,600											
Information	500	500											
Financial Activities	3,000	3,000											
Professional and Business Services	6,500	6,500											
Private Educ. and Health Services	13,400	13,500											
Leisure and Hospitality	9,700	9,900											
Other Services	2,600	2,700											
Government	11,400	11,800											
Federal Government	1,800	1,800											
State and Local Government	9,600	10,000											

Benchmark year 2025, quarter 1, rev. 4/13/2026

Equal Opportunity Employer/ Program available in alternative format/ reasonable accomodations: 602-771-1110, TDD 1-800-367-8939

Nonfarm Employment

Prepared in Cooperation with the U.S. Department of Labor, Bureau of Labor Statistics

Arizona Office of Economic Opportunity

2026

Yuma County(Yuma MSA)

	JAN	FEB	MAR	APR	MAY	JUN	JUL	AUG	SEP	OCT	NOV	DEC	AVG
Total Nonfarm	60,900	60,900											
Total Private	45,400	45,400											
Goods Producing	6,700	6,600											
Mining and Construction	4,000	3,900											
Manufacturing	2,700	2,700											
Service-Providing	54,200	54,300											
Private Service-Providing	38,700	38,800											
Trade, Transportation, and Utilities	12,400	12,300											
Information	400	400											
Financial Activities	2,000	2,000											
Professional and Business Services	5,500	5,500											
Private Educ. and Health Services	9,400	9,500											
Leisure and Hospitality	7,100	7,200											
Other Services	1,900	1,900											
Government	15,500	15,500											
Federal Government	3,700	3,700											
State and Local Government	11,800	11,800											

Benchmark year 2025, quarter 1, rev. 4/13/2026

Equal Opportunity Employer/ Program available in alternative format/ reasonable accomodations: 602-771-1110, TDD 1-800-367-8939

About This Publication

Arizona's Workforce is published 14 times a year by the State of Arizona Office of Economic Opportunity (OEO) — 12 times as the monthly Employment Report and twice a year as an Employment Projections Report. OEO is the state agency responsible for labor market information and demographic data for the state of Arizona.

Material published in *Arizona's Workforce* is in the public domain and can be reproduced without further permission. Appropriate citations are requested.

Next Release:

March Employment Report, April 30, 2026, 10:00 am

Office of Economic Opportunity

Mary Foote	Director
Doug Walls	Research Administrator

On the web: <https://laborstats.az.gov/>

Phone: 602-771-2222

To be placed on the *Arizona Workforce* email distribution list, or to send feedback or questions, contact:

labor.info@oeo.az.gov

— Equal Opportunity Employer/Program —

Under Titles VI and VII of the Civil Rights Act of 1964 (Title VI & VII), and the Americans with Disabilities Act of 1990 (ADA), Section 504 of the Rehabilitation Act of 1973, and the Age Discrimination Act of 1975, the Department prohibits discrimination in admissions, programs, services, activities, or employment based on race, color, religion, sex, national origin, age, and disability. The Department must make a reasonable accommodation to allow a person with a disability to take part in a program, service or activity. For example, this means if necessary, the Department must provide sign language interpreters for people who are deaf, a wheelchair accessible location, or enlarged print materials. It also means that the Department will take any other reasonable action that allows you to take part in and understand a program or activity, including making reasonable changes to an activity. If you believe that you will not be able to understand or take part in a program or activity because of your disability, please let us know of your disability needs in advance if at all possible. To request this document in alternative format or for further information about this policy, contact the Department of Economic Security, Division of Developmental Disabilities ADA Coordinator at 602 542-6825 ; TTY/TDD Services: 7-1-1.

This page left intentionally blank.