



OFFICE OF ECONOMIC OPPORTUNITY

Monthly Employment Report

July 15, 2021

Total Nonfarm Employment Increased by 151,900 Jobs Year Over Year in June 2021 Arizona Unemployment Rate Increased to 6.8%

The Arizona seasonally-adjusted unemployment rate increased to 6.8% in June 2021 from 6.7% in May 2021. The U.S. seasonally-adjusted unemployment rate increased to 5.9% in June 2021 from 5.8% in May 2021. Month over month, Arizona's seasonally-adjusted labor force increased by 10,908 individuals or 0.3%. Year over year, the labor force increased by 61,611 individuals or 1.7%. Month over month, Arizona total non-farm employment decreased by 8,800 jobs or -0.3%. Year over year, total non-farm employment increased by 151,900 jobs or 5.5%.

Arizona, U.S. Economic Indicators

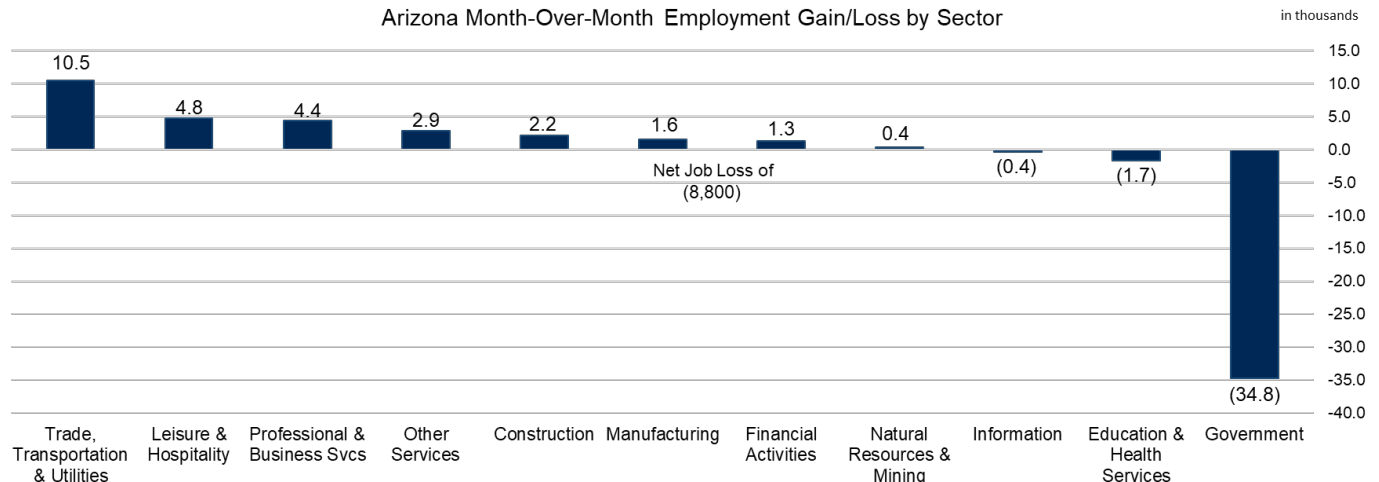
Unemployment Rate (Seasonally Adj.)	June '21	May '21	June '20
Arizona	6.8%	6.7%	10.7%
United States	5.9%	5.8%	11.1%
Arizona (Unadj. Rate)	7.3%	6.7%	10.8%
Arizona Nonfarm Employment (in Thousands)	June '21	May '21	June '20
Overall	2,901.9	2,910.7	2,750.0
Over-Month % Chg.	-0.3%	0.1%	0.1%
Over-Year % Chg.	5.5%	6.0%	-4.5%

Month Over Month

Arizona nonfarm employment decreased by 8,800 jobs or -0.3% in June. Historically (2011-2020), nonfarm employment has recorded a loss of 45,000 jobs in June.

The government sector recorded a loss of 34,800 jobs in June, less than the historical average (2011-2020) loss of 42,400 jobs. The private sector recorded a gain of 26,000 jobs in June. Historically (2011-2020), private sector employment has averaged a loss of 2,700 jobs in June, with losses primarily in Education & Health Services and Other Services.

Arizona Month-Over-Month Employment Gain/Loss by Sector



Source: Produced by the Arizona Office of Economic Opportunity in cooperation with the U.S. Dept. of Labor, Bureau of Labor Statistics

Private sector employment gains were reported in the following sectors:

- Trade, Transportation and Utilities (10,500 jobs)
- Leisure and Hospitality (4,800 jobs)
- Professional and Business Services (4,400 jobs)

- Other Services (2,900 jobs)
- Construction (2,200 jobs)
- Manufacturing (1,600 jobs)
- Financial Activities (1,300 jobs)
- Natural Resources and Mining (400 jobs)

Private sector employment losses were reported in the following sectors:

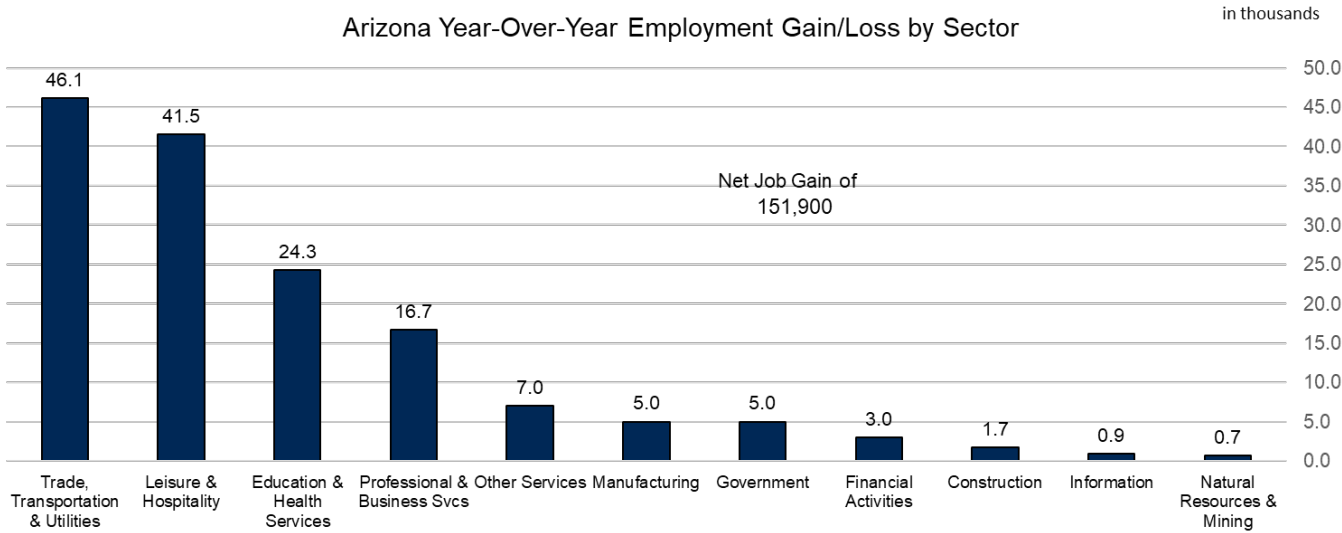
- Education and Health Services (-1,700 jobs)
- Information (-400 jobs)

Year Over Year

Arizona nonfarm employment increased by 151,900 jobs or 5.5% in June. Gains were recorded in private sector employment (146,900 jobs), and government recorded gains of 5,000 jobs in June.

Gains were reported in all of the eleven sectors including:

- Trade, Transportation and Utilities (46,100 jobs)
- Leisure and Hospitality (41,500 jobs)
- Education and Health Services (24,300 jobs)
- Professional and Business Services (16,700 jobs)
- Other Services (7,000 jobs)
- Manufacturing (5,000 jobs)
- Government (5,000 jobs)
- Financial Activities (3,000 jobs)
- Construction (1,700 jobs)
- Information (900 jobs)
- Natural Resources and Mining (700 jobs)

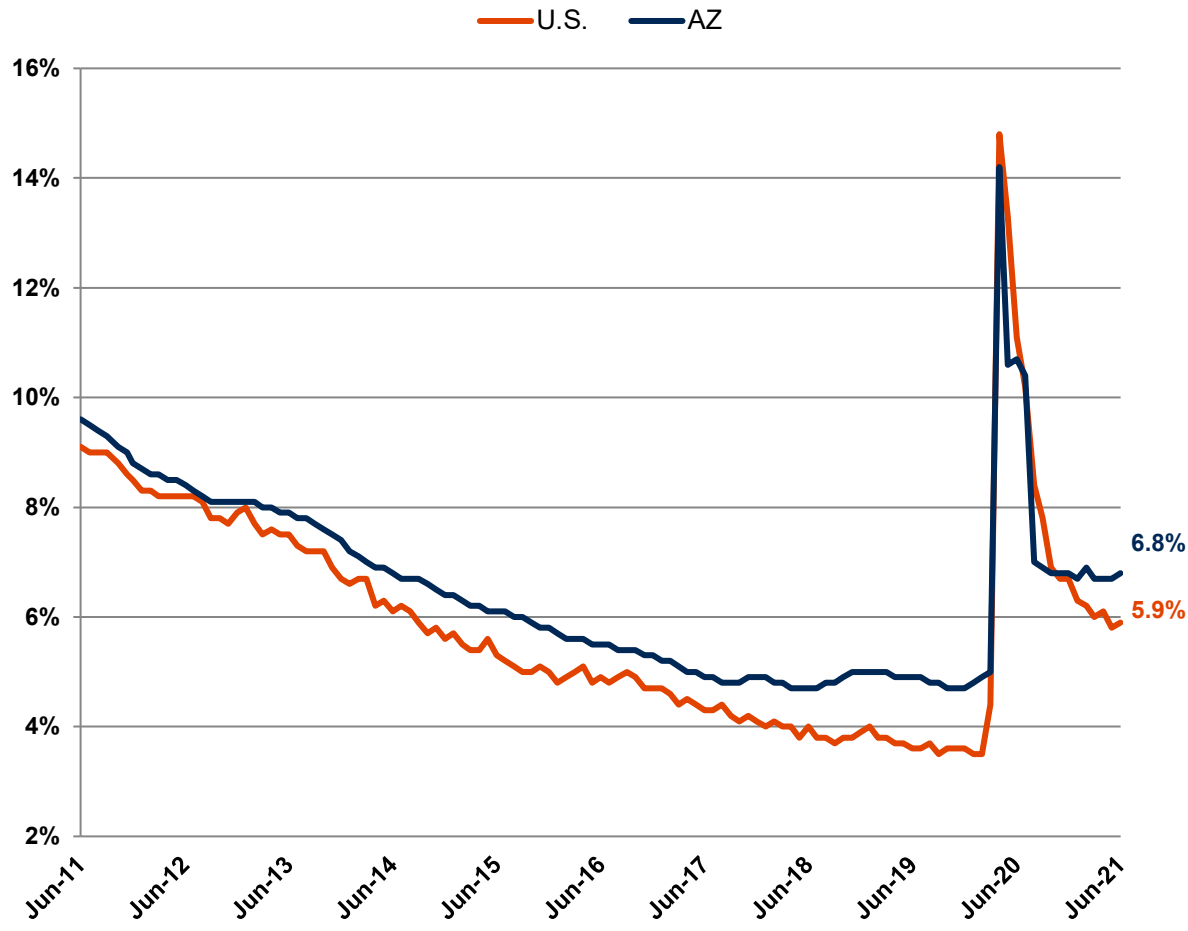


Source: Produced by the Arizona Office of Economic Opportunity in cooperation with the U.S. Dept. of Labor, Bureau of Labor Statistics

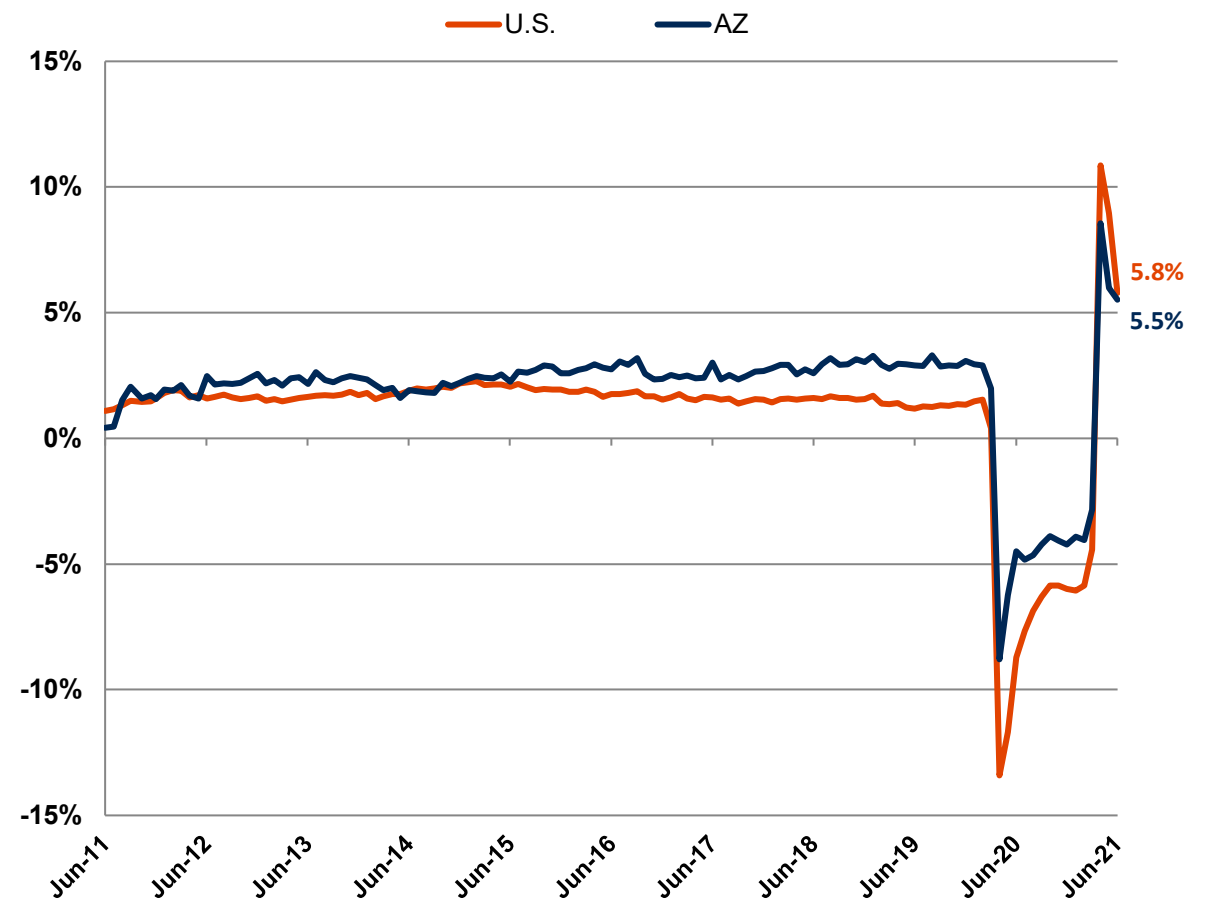
Note: June 2021 year over year calculations include June 2020 as the historical period of comparison. Because of the COVID-19 pandemic, employment estimates for almost every industry across Arizona in June 2020 recorded larger than average single-month declines. With June 2020 as the comparison point, as the state recovers jobs, employment estimate increases for June are atypically large.

LABOR MARKET TRENDS CHARTS

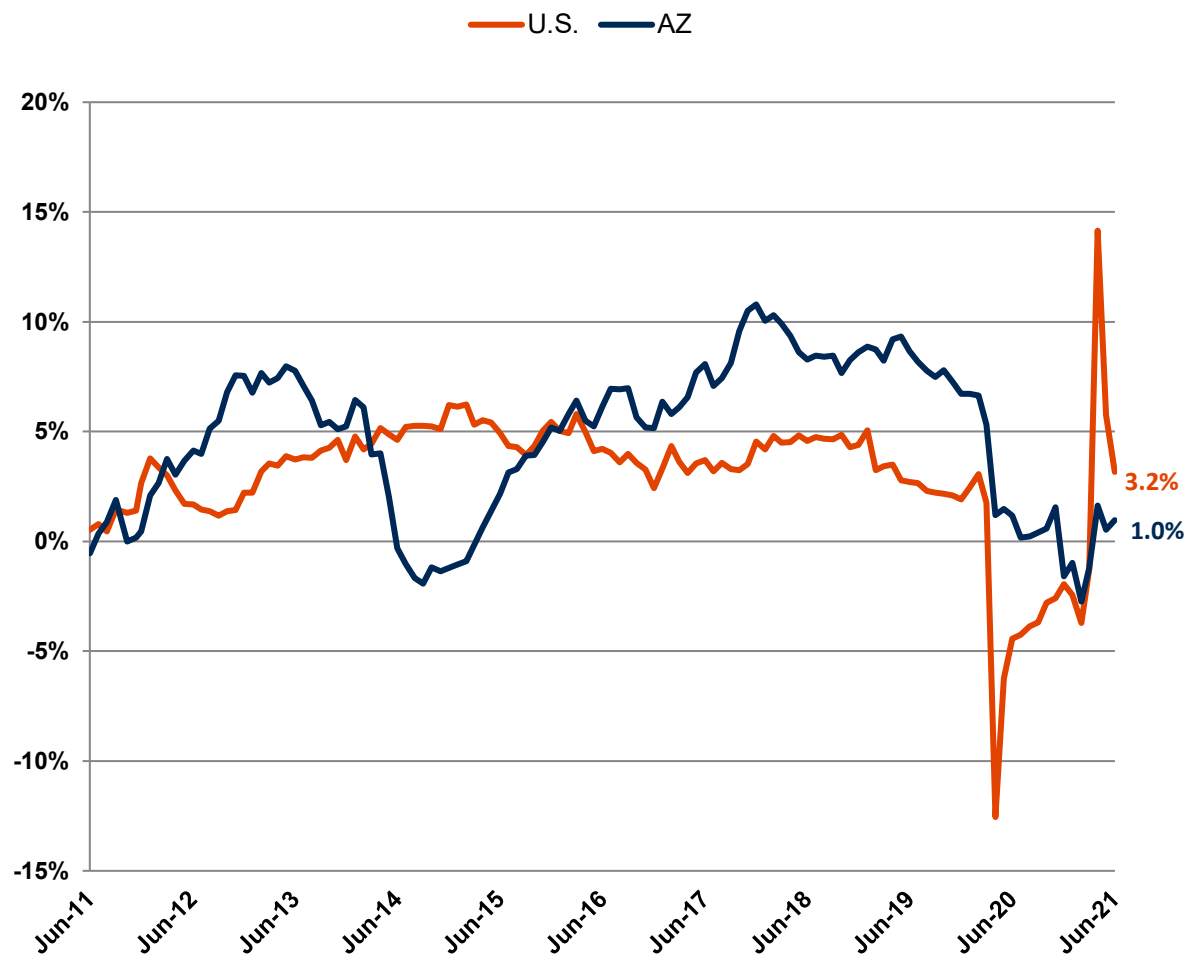
Arizona & U.S. Unemployment Rate
Seasonally Adjusted



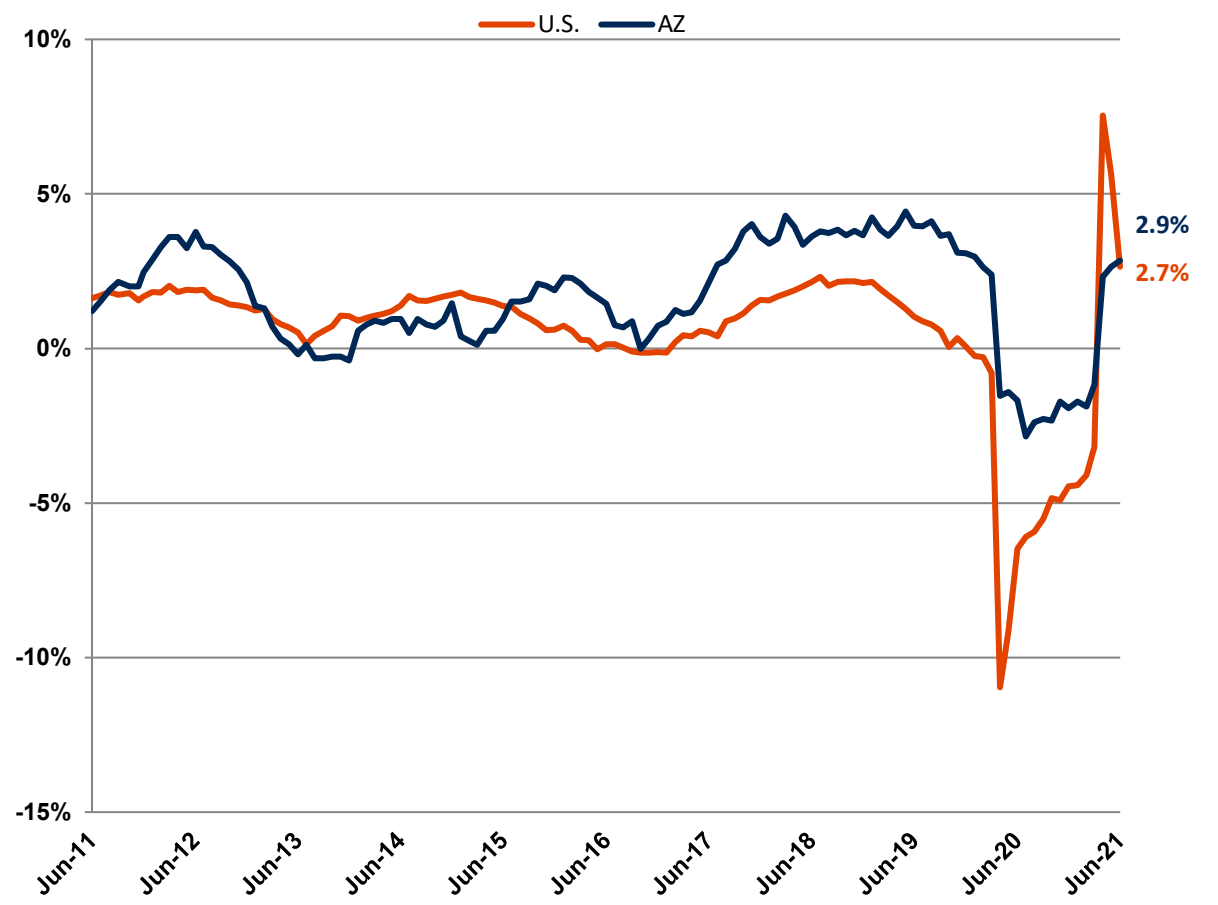
Arizona & U.S. Nonfarm Employment
Year-to-Year Percent Change



Arizona & U.S. Construction Employment
Year-to-Year Percent Change



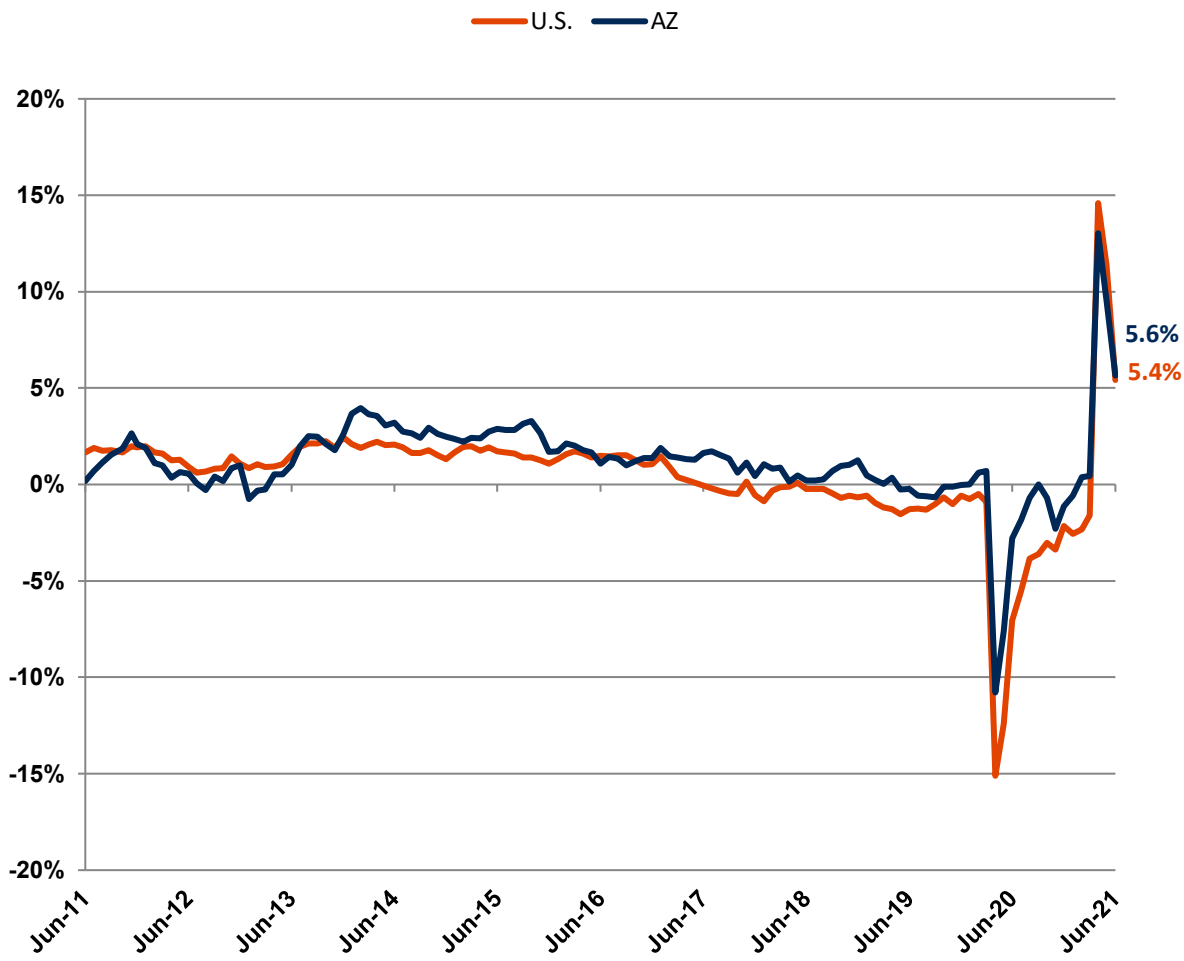
Arizona & U.S. Manufacturing Employment
Year-to-Year Percent Change



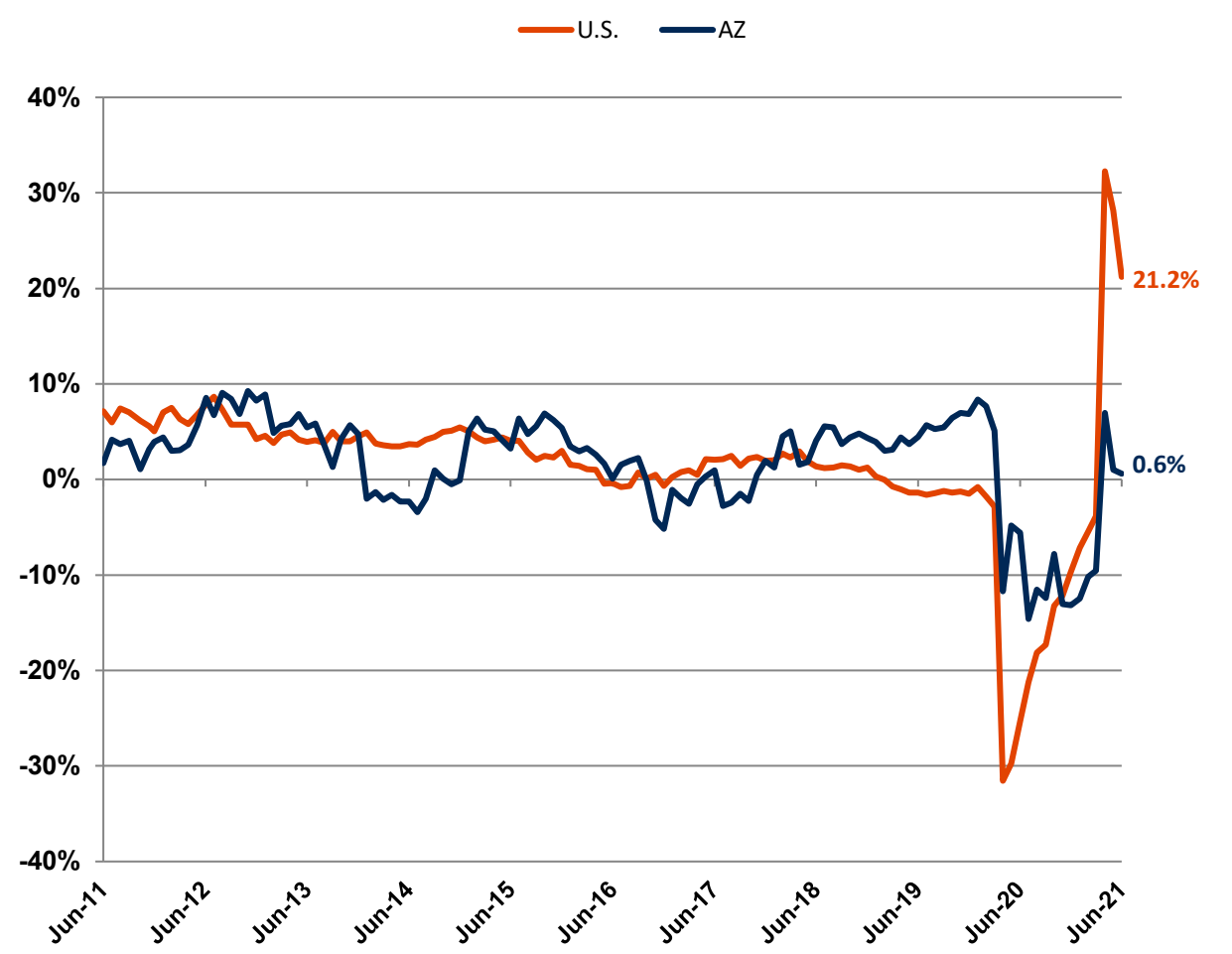
Source: Prepared by the Arizona Office of Economic Opportunity, in cooperation with the U.S. Dept. of Labor, Bureau of Labor Statistics

LABOR MARKET TRENDS CHARTS

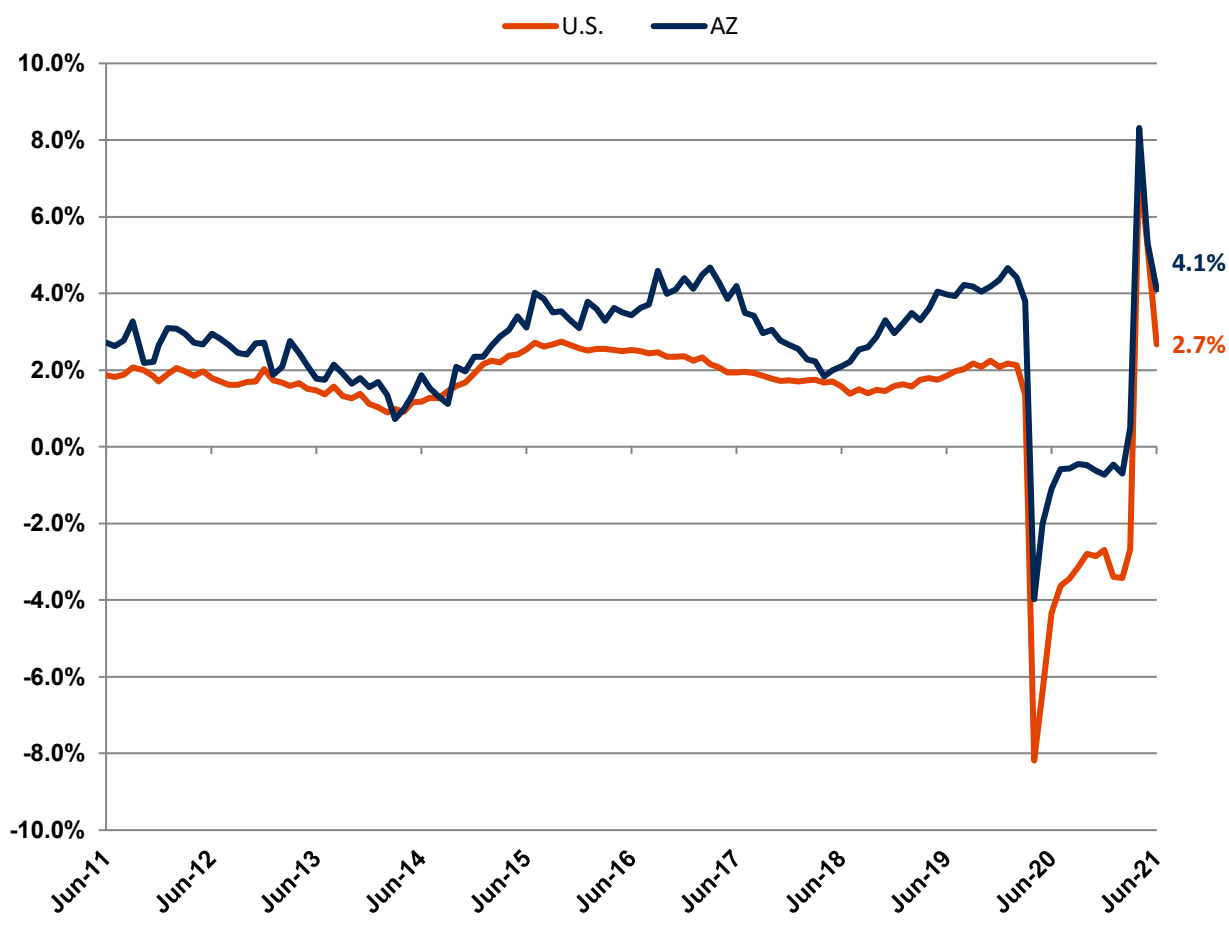
Arizona & U.S. Retail Trade
Year-to-Year Percent Change



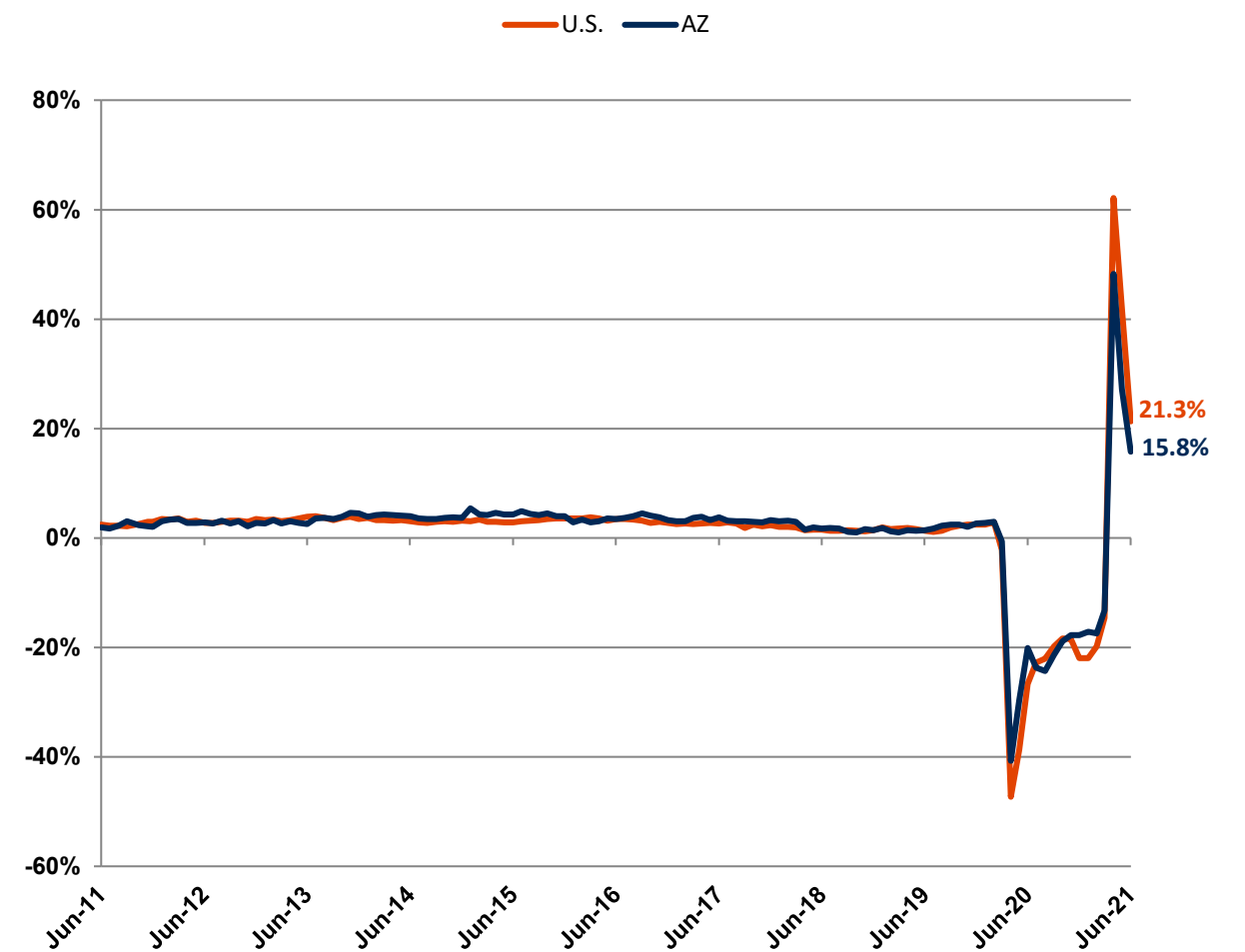
Arizona & U.S. Employment Services
Year-to-Year Percent Change



Arizona & U.S. Health Care
Year-to-Year Percent Change



Arizona & U.S. Leisure & Hospitality
Year-to-Year Percent Change



Source: Prepared by the Arizona Office of Economic Opportunity, in cooperation with the U.S. Dept. of Labor, Bureau of Labor Statistics

Table 1

Labor Force, Employment, Unemployment and Unemployment Rates^(a)

(in Thousands)

ARIZONA	June 2021 ^(c)	May 2021 ^(d)	June 2020 ^(d)	Monthly/Yearly Change	
				May '21 - June '21	June '20 - June '21
Civilian Labor Force ^(e)	3,656.6	3,628.0	3,559.5	28.6	97.1
Unemployment	265.5	243.4	386.0	22.1	-120.5
Unemployment Rate	7.3%	6.7%	10.8%	0.6	-3.5
Unemployment Rate (Seasonally Adjusted) ^(f)	6.8%	6.7%	10.7%	0.1	-3.9
Total Employment	3,391.1	3,384.6	3,173.6	6.5	217.5
FLAGSTAFF MSA (Coconino County)					
Civilian Labor Force ^(e)	76.5	74.4	75.2	2.0	1.2
Unemployment	6.7	6.0	10.0	0.7	-3.3
Unemployment Rate (Unadjusted)	8.7%	8.1%	13.3%	0.6	-4.6
Total Employment	69.8	68.4	65.2	1.4	4.6
LAKE HAVASU CITY-KINGMAN MSA (Mohave County)					
Civilian Labor Force ^(e)	90.1	89.4	89.7	0.6	0.4
Unemployment	7.4	6.7	11.7	0.7	-4.4
Unemployment Rate (Unadjusted)	8.2%	7.5%	13.1%	0.7	-4.9
Total Employment	82.7	82.7	77.9	0.0	4.7
PHOENIX-MESA-SCOTTSDALE MSA (Maricopa & Pinal Counties)					
Civilian Labor Force ^(e)	2,603.4	2,574.7	2,515.8	28.7	87.5
Unemployment	172.1	159.7	258.8	12.4	-86.7
Unemployment Rate (Unadjusted)	6.6%	6.2%	10.3%	0.4	-3.7
Total Employment	2,431.3	2,415.0	2,257.1	16.3	174.2
PRESCOTT MSA (Yavapai County)					
Civilian Labor Force ^(e)	110.5	109.9	107.4	0.6	3.1
Unemployment	6.8	6.3	10.7	0.5	-3.9
Unemployment Rate (Unadjusted)	6.1%	5.7%	9.9%	0.4	-3.8
Total Employment	103.7	103.7	96.7	0.1	7.0
SIERRA VISTA-DOUGLAS MSA (Cochise County)					
Civilian Labor Force ^(e)	52.7	52.5	51.4	0.2	1.3
Unemployment	3.7	3.4	4.7	0.3	-1.0
Unemployment Rate (Unadjusted)	6.9%	6.4%	9.1%	0.5	-2.2
Total Employment	49.1	49.1	46.7	-0.1	2.3

Notes: For notes and source, see end of Table 1

(Continued on next page)

Table 1 (Cont.)

Labor Force, Employment, Unemployment and Unemployment Rates^{(a)(b)}

(in Thousands)

	June 2021(c)	May 2021(d)	June 2020(d)	Monthly/Yearly Change	
				May '21 - June '21	June '20 - June '21
TUCSON MSA (Pima County)					
Civilian Labor Force ^(e)	497.7	503.7	495.3	-6.0	2.4
Unemployment	36.6	33.9	52.3	2.7	-15.7
Unemployment Rate (Unadjusted)	7.4%	6.7%	10.6%	0.7	-3.2
Total Employment	461.1	469.8	442.9	-8.7	18.1
YUMA MSA (Yuma County)					
Civilian Labor Force ^(e)	97.1	94.7	95.9	2.4	1.2
Unemployment	19.8	16.2	21.7	3.6	-1.9
Unemployment Rate (Unadjusted)	20.4%	17.1%	22.6%	3.3	-2.2
Total Employment	77.3	78.5	74.2	-1.1	3.1

Notes: a) Labor force, unemployment, total employment, and unadjusted unemployment rates are produced by the Local Area Unemployment Statistics (LAUS) program in the Arizona Office of Employment and Population Statistics, in cooperation with the U.S. Dept. of Labor, Bureau of Labor Statistics (BLS). BLS data used as part of the input in producing LAUS data come from the monthly Household Survey, produced by the Census Bureau for the U.S. Department of Labor, Bureau of Labor Statistics.

For more information on the LAUS program, visit this website: <http://www.bls.gov/lau/laufaq.htm>

c) Preliminary

d) Revised

e) Adjusted to Current Population Survey (CPS 2017) to reflect place of residence

f) Normal seasonal variations have been eliminated to reflect underlying trends

MSA - Metropolitan Statistical Area

NA - Not Available

Source: Prepared by the Arizona Office of Economic Opportunity, in cooperation with the U.S. Dept. of Labor, Bureau of Labor Statistics

Table 2
Nonfarm Payroll Employment

(in Thousands, Not Seasonally Adjusted)

ARIZONA ^(a)				Amount Change		Percent Change	
	June	May	June	Monthly	Over-Year	Monthly	Over-Year
	2021(b)	2021(c)	2020(c)	May '21 - June '21	June '20 - June '21	May '21 - June '21	June '20 - June '21
Total Nonfarm Payroll Employment^(c,d)	2,901.9	2,910.7	2,750.0	-8.8	151.9	-0.3%	5.5%
Private Sector	2,529.3	2,503.3	2,382.4	26.0	146.9	1.0%	6.2%
Government	372.6	407.4	367.6	-34.8	5.0	-8.5%	1.4%
Goods-Producing Industries	368.6	364.4	361.2	4.2	7.4	1.2%	2.0%
Manufacturing	180.4	178.8	175.4	1.6	5.0	0.9%	2.9%
Durable Goods	137.4	136.0	133.8	1.4	3.6	1.0%	2.7%
Fabricated Metal	21.2	21.0	20.9	0.2	0.3	1.0%	1.4%
Computer and Electronic Parts	33.9	33.8	34.0	0.1	-0.1	0.3%	-0.3%
Aerospace Products and Parts	29.8	29.8	30.8	0.0	-1.0	0.0%	-3.2%
Nondurable Goods	43.0	42.8	41.6	0.2	1.4	0.5%	3.4%
Natural Resources and Mining	12.8	12.4	12.1	0.4	0.7	3.2%	5.8%
Metal Ore Mining	10.7	10.5	10.2	0.2	0.5	1.9%	4.9%
Construction	175.4	173.2	173.7	2.2	1.7	1.3%	1.0%
Buildings	36.6	35.5	35.4	1.1	1.2	3.1%	3.4%
Heavy	20.8	20.7	21.0	0.1	-0.2	0.5%	-1.0%
Specialty Trades	118.0	117.0	117.3	1.0	0.7	0.9%	0.6%
Service-Providing Industries	2,533.3	2,546.3	2,388.8	-13.0	144.5	-0.5%	6.0%
Private Service Providing	2,160.7	2,138.9	2,021.2	21.8	139.5	1.0%	6.9%
Trade, Transportation and Utilities	579.6	569.1	533.5	10.5	46.1	1.8%	8.6%
Trade	433.1	426.4	407.7	6.7	25.4	1.6%	6.2%
Wholesale Trade	103.7	101.0	95.9	2.7	7.8	2.7%	8.1%
Retail Trade	329.4	325.4	311.8	4.0	17.6	1.2%	5.6%
Motor Vehicles and Parts	48.7	48.1	45.8	0.6	2.9	1.2%	6.3%
Furniture and Home Furnishings	9.5	9.6	8.4	-0.1	1.1	-1.0%	13.1%
Building Material, Garden Supply	30.5	30.7	29.8	-0.2	0.7	-0.7%	2.3%
Food and Beverage	62.8	62.6	61.8	0.2	1.0	0.3%	1.6%
Clothing and Accessories	15.3	15.1	13.5	0.2	1.8	1.3%	13.3%
General Merchandise	63.8	63.0	63.3	0.8	0.5	1.3%	0.8%
Department Stores	17.6	17.4	15.3	0.2	2.3	1.1%	15.0%
Other General merchandise	46.2	45.6	48.0	0.6	-1.8	1.3%	-3.8%
Transp., Warehousing, and Utilities	146.5	142.7	125.8	3.8	20.7	2.7%	16.5%
Utilities	11.8	11.8	11.9	0.0	-0.1	0.0%	-0.8%
Transportation and Warehousing	134.7	130.9	113.9	3.8	20.8	2.9%	18.3%
Truck Transportation	25.0	24.7	23.5	0.3	1.5	1.2%	6.4%
Information	43.8	44.2	42.9	-0.4	0.9	-0.9%	2.1%
Telecommunications	14.3	14.3	14.6	0.0	-0.3	0.0%	-2.1%
Financial Activities	233.2	231.9	230.2	1.3	3.0	0.6%	1.3%
Finance and Insurance	180.0	178.8	177.6	1.2	2.4	0.7%	1.4%
Credit Intermediation., Monetary Auth.	96.2	94.9	91.1	1.3	5.1	1.4%	5.6%
Financial Investments and Vehicles	20.3	20.2	19.8	0.1	0.5	0.5%	2.5%
Insurance Carriers	63.5	63.7	66.7	-0.2	-3.2	-0.3%	-4.8%
Real Estate and Rental and Leasing	53.2	53.1	52.6	0.1	0.6	0.2%	1.1%
Professional and Business Services	439.3	434.9	422.6	4.4	16.7	1.0%	4.0%
Professional, Scientific and Technical Services	171.3	168.5	156.2	2.8	15.1	1.7%	9.7%
Management of Companies and Enterprises	32.4	32.5	31.7	-0.1	0.7	-0.3%	2.2%
Administrative and Waste Services	235.6	233.9	234.7	1.7	0.9	0.7%	0.4%
Employment Services	100.0	100.1	99.4	-0.1	0.6	-0.1%	0.6%
Business Support Services	32.4	32.1	35.2	0.3	-2.8	0.9%	-8.0%
Services to Buildings and Dwellings	48.4	46.4	44.4	2.0	4.0	4.3%	9.0%
Education and Health Services	468.0	469.7	443.7	-1.7	24.3	-0.4%	5.5%
Educational Services	69.3	70.0	58.3	-0.7	11.0	-1.0%	18.9%
Health Care and Social Assistance	398.7	399.7	385.4	-1.0	13.3	-0.3%	3.5%
Health Care	339.4	339.4	326.0	0.0	13.4	0.0%	4.1%
Ambulatory Health Care Services	183.2	183.3	171.5	-0.1	11.7	-0.1%	6.8%
Hospitals	98.9	98.6	98.1	0.3	0.8	0.3%	0.8%
Nursing and Residential Care Facilities	57.3	57.5	56.4	-0.2	0.9	-0.3%	1.6%
Social Assistance	59.3	60.3	59.4	-1.0	-0.1	-1.7%	-0.2%
Leisure and Hospitality	304.3	299.5	262.8	4.8	41.5	1.6%	15.8%
Arts, Entertainment and Recreation	41.0	38.5	32.1	2.5	8.9	6.5%	27.7%
Accommodation and Food Services	263.3	261.0	230.7	2.3	32.6	0.9%	14.1%
Accommodation	33.0	31.6	28.8	1.4	4.2	4.4%	14.6%
Food Services and Drinking Places	230.3	229.4	201.9	0.9	28.4	0.4%	14.1%
Other Services (except Public Administration)	92.5	89.6	85.5	2.9	7.0	3.2%	8.2%
Government	372.6	407.4	367.6	-34.8	5.0	-8.5%	1.4%
Federal Government	58.1	58.0	58.7	0.1	-0.6	0.2%	-1.0%
State Government	78.3	86.6	78.0	-8.3	0.3	-9.6%	0.4%
State Government Education	40.8	48.8	40.3	-8.0	0.5	-16.4%	1.2%
Other State Government	37.5	37.8	37.7	-0.3	-0.2	-0.8%	-0.5%
Local Government	236.2	262.8	230.9	-26.6	5.3	-10.1%	2.3%
Local Government Education	106.2	133.4	98.8	-27.2	7.4	-20.4%	7.5%
Other Local Government	130.0	129.4	132.1	0.6	-2.1	0.5%	-1.6%

Note: For notes and source, see end of Table 2

Table 2 (Cont.)

Nonfarm Payroll Employment

(in Thousands, Not Seasonally Adjusted)

PHOENIX-MESA-SCOTTSDALE MSA ¹				Amount Change		Percent Change	
	June	May	June	Monthly	Over-Year	Monthly	Over-Year
	2021(b)	2021(c)	2020(c)	May '21 - June '21	June '20 - June '21	May '21 - June '21	June '20 - June '21
Total Nonfarm Payroll Employment^(c,d)	2,179.3	2,174.1	2,045.0	5.2	134.3	0.2%	6.6%
Private Sector	1,959.4	1,936.3	1,833.4	23.1	126.0	1.2%	6.9%
Government	219.9	237.8	211.6	-17.9	8.3	-7.5%	3.9%
Goods-Producing Industries	275.6	272.8	270.2	2.8	5.4	1.0%	2.0%
Manufacturing	136.7	135.8	132.2	0.9	4.5	0.7%	3.4%
Durable Goods	101.8	101.2	98.2	0.6	3.6	0.6%	3.7%
Computer and Electronic Parts	30.6	30.5	30.3	0.1	0.3	0.3%	1.0%
Aerospace Products and Parts	15.8	15.8	16.8	0.0	-1.0	0.0%	-6.0%
Nondurable Goods	34.9	34.6	34.0	0.3	0.9	0.9%	2.6%
Natural Resources and Mining	2.8	2.8	2.9	0.0	-0.1	0.0%	-3.4%
Construction	136.1	134.2	135.1	1.9	1.0	1.4%	0.7%
Buildings	27.8	27.0	27.6	0.8	0.2	3.0%	0.7%
Heavy	14.9	14.9	15.1	0.0	-0.2	0.0%	-1.3%
Specialty Trades	93.4	92.3	92.4	1.1	1.0	1.2%	1.1%
Service-Providing Industries	1,903.7	1,901.3	1,774.8	2.4	128.9	0.1%	7.3%
Private Service Providing	1,683.8	1,663.5	1,563.2	20.3	120.6	1.2%	7.7%
Trade, Transportation and Utilities	439.7	431.1	402.2	8.6	37.5	2.0%	9.3%
Trade	326.0	320.8	304.3	5.2	21.7	1.6%	7.1%
Wholesale Trade	88.5	86.1	80.2	2.4	8.3	2.8%	10.3%
Retail Trade	237.5	234.7	224.1	2.8	13.4	1.2%	6.0%
Motor Vehicles and Parts	37.0	36.4	33.7	0.6	3.3	1.6%	9.8%
Building Material, Garden Supply	20.6	20.9	20.5	-0.3	0.1	-1.4%	0.5%
Food and Beverage	43.0	42.9	42.7	0.1	0.3	0.2%	0.7%
General Merchandise	44.6	44.0	42.1	0.6	2.5	1.4%	5.9%
Department Stores	13.3	13.2	11.4	0.1	1.9	0.8%	16.7%
Other General merchandise	31.3	30.8	30.7	0.5	0.6	1.6%	2.0%
Transportation, Warehousing and Utilities	113.7	110.3	97.9	3.4	15.8	3.1%	16.1%
Utilities	8.0	8.0	8.0	0.0	0.0	0.0%	0.0%
Transportation and warehousing	105.7	102.3	89.9	3.4	15.8	3.3%	17.6%
Truck transportation	19.4	19.2	18.1	0.2	1.3	1.0%	7.2%
Information	36.7	36.5	35.7	0.2	1.0	0.5%	2.8%
Telecommunications	11.9	11.7	12.0	0.2	-0.1	1.7%	-0.8%
Financial Activities	205.7	204.5	202.7	1.2	3.0	0.6%	1.5%
Finance and Insurance	162.7	161.7	160.3	1.0	2.4	0.6%	1.5%
Credit Intermediation., Monetary Auth.	88.8	87.6	83.8	1.2	5.0	1.4%	6.0%
Financial Investments and Vehicles	17.2	17.2	17.3	0.0	-0.1	0.0%	-0.6%
Insurance Carriers	56.7	56.9	59.2	-0.2	-2.5	-0.4%	-4.2%
Real Estate and Rental and Leasing	43.0	42.8	42.4	0.2	0.6	0.5%	1.4%
Professional and Business Services	370.6	365.3	349.9	5.3	20.7	1.5%	5.9%
Professional, Scientific and Technical Services	140.5	137.3	127.0	3.2	13.5	2.3%	10.6%
Management of Companies and Enterprises	29.8	29.9	29.5	-0.1	0.3	-0.3%	1.0%
Administrative and Waste Services	200.3	198.1	193.4	2.2	6.9	1.1%	3.6%
Employment Services	89.8	90.0	87.3	-0.2	2.5	-0.2%	2.9%
Business Support Services	23.8	23.6	24.4	0.2	-0.6	0.8%	-2.5%
Services to Buildings and Dwellings	41.0	38.8	34.9	2.2	6.1	5.7%	17.5%
Education and Health Services	349.3	348.3	325.4	1.0	23.9	0.3%	7.3%
Educational Services	57.2	57.7	48.2	-0.5	9.0	-0.9%	18.7%
Health Care and Social Assistance	292.1	290.6	277.2	1.5	14.9	0.5%	5.4%
Health Care	248.7	247.1	233.6	1.6	15.1	0.6%	6.5%
Ambulatory Health Care Services	143.0	142.5	130.6	0.5	12.4	0.4%	9.5%
Hospitals	66.0	65.1	64.2	0.9	1.8	1.4%	2.8%
Nursing and Residential Care Facilities	39.7	39.5	38.8	0.2	0.9	0.5%	2.3%
Social Assistance	43.4	43.5	43.6	-0.1	-0.2	-0.2%	-0.5%
Leisure and Hospitality	213.3	210.6	184.2	2.7	29.1	1.3%	15.8%
Arts, Entertainment and Recreation	32.1	30.1	24.4	2.0	7.7	6.6%	31.6%
Accommodation and Food Services	181.2	180.5	159.8	0.7	21.4	0.4%	13.4%
Accommodation	16.9	16.5	16.4	0.4	0.5	2.4%	3.0%
Food Services and Drinking Places	164.3	164.0	143.4	0.3	20.9	0.2%	14.6%
Other Services (except Public Administration)	68.5	67.2	63.1	1.3	5.4	1.9%	8.6%
Government	219.9	237.8	211.6	-17.9	8.3	-7.5%	3.9%
Federal Government	23.9	23.9	24.3	0.0	-0.4	0.0%	-1.6%
State Government	46.8	49.6	45.9	-2.8	0.9	-5.6%	2.0%
State Government Education	20.3	22.9	19.2	-2.6	1.1	-11.4%	5.7%
Local Government	149.2	164.3	141.4	-15.1	7.8	-9.2%	5.5%
Local Government Education	68.1	86.4	62.3	-18.3	5.8	-21.2%	9.3%

Note: 1) Phoenix-Mesa-Scottsdale Metropolitan Area includes Maricopa and Pinal counties. For other notes and source, see end of Table 2

Table 2 (Cont.)

Nonfarm Payroll Employment

(in Thousands, Not Seasonally Adjusted)

TUCSON MSA ³				Amount Change		Percent Change	
	June	May	June	Monthly	Over-Year	Monthly	Over-Year
	2021(b)	2021(c)	2020(c)	May '21 - June '21	June '20 - June '21	May '21 - June '21	June '20 - June '21
Total Nonfarm Payroll Employment^(c,d)	369.5	379.6	359.6	-10.1	9.9	-2.7%	2.8%
Private Sector	305.1	305.5	292.3	-0.4	12.8	-0.1%	4.4%
Government	64.4	74.1	67.3	-9.7	-2.9	-13.1%	-4.3%
Goods-Producing Industries	48.4	47.7	47.2	0.7	1.2	1.5%	2.5%
Manufacturing	27.9	27.5	27.4	0.4	0.5	1.5%	1.8%
Aerospace Products and Parts	13.6	13.6	13.8	0.0	-0.2	0.0%	-1.4%
Natural Resources and Mining	1.9	1.9	1.8	0.0	0.1	0.0%	5.6%
Construction	18.6	18.3	18.0	0.3	0.6	1.6%	3.3%
Specialty Trades	12.6	12.5	12.8	0.1	-0.2	0.8%	-1.6%
Service-Providing Industries	321.1	331.9	312.4	-10.8	8.7	-3.3%	2.8%
Private Service Providing	256.7	257.8	245.1	-1.1	11.6	-0.4%	4.7%
Trade, Transportation and Utilities	68.7	67.8	62.2	0.9	6.5	1.3%	10.5%
Trade	48.3	47.8	46.0	0.5	2.3	1.0%	5.0%
Wholesale Trade	6.9	6.8	6.8	0.1	0.1	1.5%	1.5%
Retail Trade	41.4	41.0	39.2	0.4	2.2	1.0%	5.6%
General Merchandise	9.1	9.0	8.5	0.1	0.6	1.1%	7.1%
Department Stores	2.4	2.4	2.1	0.0	0.3	0.0%	14.3%
Other General Merchandise	6.7	6.6	6.4	0.1	0.3	1.5%	4.7%
Food and Beverage Stores	9.4	9.4	9.3	0.0	0.1	0.0%	1.1%
Transportation, Warehousing and Utilities	20.4	20.0	16.2	0.4	4.2	2.0%	25.9%
Information	4.9	5.1	4.8	-0.2	0.1	-3.9%	2.1%
Financial Activities	18.1	18.1	17.4	0.0	0.7	0.0%	4.0%
Professional and Business Services	46.1	46.4	47.7	-0.3	-1.6	-0.6%	-3.4%
Professional, Scientific and Technical Services	19.1	19.1	18.1	0.0	1.0	0.0%	5.5%
Administrative and Waste Services	23.8	24.2	28.2	-0.4	-4.4	-1.7%	-15.6%
Employment Services	8.9	9.0	10.1	-0.1	-1.2	-1.1%	-11.9%
Business Support Services	7.5	7.4	8.1	0.1	-0.6	1.4%	-7.4%
Education and Health Services	66.4	68.5	66.0	-2.1	0.4	-3.1%	0.6%
Health Care	50.7	51.1	49.8	-0.4	0.9	-0.8%	1.8%
Ambulatory Health Care Services	23.8	23.9	22.9	-0.1	0.9	-0.4%	3.9%
Hospitals	16.7	16.7	16.6	0.0	0.1	0.0%	0.6%
Nursing and Residential Care Facilities	10.2	10.5	10.3	-0.3	-0.1	-2.9%	-1.0%
Leisure and Hospitality	39.6	39.2	34.4	0.4	5.2	1.0%	15.1%
Accommodations and Food Services	34.7	34.5	30.6	0.2	4.1	0.6%	13.4%
Accommodations	3.9	3.8	3.7	0.1	0.2	2.6%	5.4%
Food Services and Drinking Places	30.8	30.7	26.9	0.1	3.9	0.3%	14.5%
Other Services (except Public Administration)	12.9	12.7	12.6	0.2	0.3	1.6%	2.4%
Government	64.4	74.1	67.3	-9.7	-2.9	-13.1%	-4.3%
Federal Government	12.7	12.8	13.1	-0.1	-0.4	-0.8%	-3.1%
State Government	19.2	24.3	18.7	-5.1	0.5	-21.0%	2.7%
State Government Education	14.4	19.4	13.9	-5.0	0.5	-25.8%	3.6%
Local Government	32.5	37.0	35.5	-4.5	-3.0	-12.2%	-8.5%
Local Government Education	15.4	19.0	16.5	-3.6	-1.1	-18.9%	-6.7%

Note: 3) Tucson Metropolitan Area includes all of Pima County. For other notes and source, see end of Table 2.

Table 2 (Cont.)

Nonfarm Payroll Employment

(in Thousands, Not Seasonally Adjusted)

YUMA MSA ⁴	June 2021(b)	May 2021(c)	June 2020(c)	Amount Change		Percent Change	
				Monthly	Over-Year	Monthly	Over-Year
				May '21 - June '21	June '20 - June '21	May '21 - June '21	June '20 - June '21
Total Nonfarm Payroll Employment^(c,d)	55.1	56.1	52.7	-1.0	2.4	-1.8%	4.6%
Private Sector	41.2	41.5	39.7	-0.3	1.5	-0.7%	3.8%
Government	13.9	14.6	13.0	-0.7	0.9	-4.8%	6.9%
Goods-Producing Industries	6.6	6.5	5.9	0.1	0.7	1.5%	11.9%
Manufacturing	2.8	2.8	2.3	0.0	0.5	0.0%	21.7%
Natural Resources and Construction	3.8	3.7	3.6	0.1	0.2	2.7%	5.6%
Service-Providing Industries	48.5	49.6	46.8	-1.1	1.7	-2.2%	3.6%
Private Service Providing	34.6	35.0	33.8	-0.4	0.8	-1.1%	2.4%
Trade, Transportation and Utilities	11.0	11.0	10.9	0.0	0.1	0.0%	0.9%
Information	0.3	0.3	0.3	0.0	0.0	0.0%	0.0%
Financial Activities	2.0	1.9	1.9	0.1	0.1	5.3%	5.3%
Professional and Business Services	6.6	6.5	6.1	0.1	0.5	1.5%	8.2%
Education and Health Services	7.2	7.9	7.5	-0.7	-0.3	-8.9%	-4.0%
Leisure and Hospitality	5.8	5.7	5.4	0.1	0.4	1.8%	7.4%
Other Services (except Public Administration)	1.7	1.7	1.7	0.0	0.0	0.0%	0.0%
Government	13.9	14.6	13.0	-0.7	0.9	-4.8%	6.9%
Federal Government	3.7	3.7	3.7	0.0	0.0	0.0%	0.0%
State and Local Government	10.2	10.9	9.3	-0.7	0.9	-6.4%	9.7%

Note: 4) Yuma Metropolitan Area includes all of Yuma County. For other notes and source, see end of Table 2

FLAGSTAFF MSA ⁵	June 2021(b)	May 2021(c)	June 2020(c)	Amount Change		Percent Change	
				Monthly	Over-Year	Monthly	Over-Year
				May '21 - June '21	June '20 - June '21	May '21 - June '21	June '20 - June '21
Total Nonfarm Payroll Employment^(c,d)	64.3	63.2	60.5	1.1	3.8	1.7%	6.3%
Private Sector	47.2	45.7	42.1	1.5	5.1	3.3%	12.1%
Government	17.1	17.5	18.4	-0.4	-1.3	-2.3%	-7.1%
Goods-Producing Industries	6.8	6.6	6.6	0.2	0.2	3.0%	3.0%
Manufacturing	4.0	3.9	3.9	0.1	0.1	2.6%	2.6%
Natural Resources and Construction	2.8	2.7	2.7	0.1	0.1	3.7%	3.7%
Service-Providing Industries	57.5	56.6	53.9	0.9	3.6	1.6%	6.7%
Private Service Providing	40.4	39.1	35.5	1.3	4.9	3.3%	13.8%
Trade, Transportation and Utilities	9.2	8.8	8.4	0.4	0.8	4.5%	9.5%
Information	0.4	0.4	0.3	0.0	0.1	0.0%	33.3%
Financial Activities	1.4	1.4	1.4	0.0	0.0	0.0%	0.0%
Professional and Business Services	3.0	3.0	3.1	0.0	-0.1	0.0%	-3.2%
Education and Health Services	9.0	9.1	9.0	-0.1	0.0	-1.1%	0.0%
Leisure and Hospitality	15.6	14.6	11.6	1.0	4.0	6.8%	34.5%
Other Services (except Public Administration)	1.8	1.8	1.7	0.0	0.1	0.0%	5.9%
Government	17.1	17.5	18.4	-0.4	-1.3	-2.3%	-7.1%
Federal Government	2.9	2.9	2.9	0.0	0.0	0.0%	0.0%
State and Local Government	14.2	14.6	15.5	-0.4	-1.3	-2.7%	-8.4%

Notes: 5) Flagstaff Metropolitan Area includes all of Coconino County. For other notes and source, see end of Table 2

Table 2 (Cont.)

Nonfarm Payroll Employment

(in Thousands, Not Seasonally Adjusted)

PRESCOTT MSA ⁶	June 2021(b)	May 2021(c)	June 2020(c)	Amount Change		Percent Change	
				Monthly	Over-Year	Monthly	Over-Year
				May '21 - June '21	June '20 - June '21	May '21 - June '21	June '20 - June '21
Total Nonfarm Payroll Employment^(c,d)	66.1	66.7	62.2	-0.6	3.9	-0.9%	6.3%
Private Sector	56.4	56.1	52.3	0.3	4.1	0.5%	7.8%
Government	9.7	10.6	9.9	-0.9	-0.2	-8.5%	-2.0%
Goods-Producing Industries	10.9	10.7	10.1	0.2	0.8	1.9%	7.9%
Manufacturing	3.7	3.7	3.6	0.0	0.1	0.0%	2.8%
Natural Resources and Construction	7.2	7.0	6.5	0.2	0.7	2.9%	10.8%
Service-Providing Industries	55.2	56.0	52.1	-0.8	3.1	-1.4%	6.0%
Private Service Providing	45.5	45.4	42.2	0.1	3.3	0.2%	7.8%
Trade, Transportation and Utilities	13.3	13.2	12.5	0.1	0.8	0.8%	6.4%
Information	0.5	0.5	0.4	0.0	0.1	0.0%	25.0%
Financial Activities	2.2	2.2	2.2	0.0	0.0	0.0%	0.0%
Professional and Business Services	5.0	4.9	4.6	0.1	0.4	2.0%	8.7%
Education and Health Services	12.1	12.2	11.7	-0.1	0.4	-0.8%	3.4%
Leisure and Hospitality	10.0	10.0	8.5	0.0	1.5	0.0%	17.6%
Other Services (except Public Administration)	2.4	2.4	2.3	0.0	0.1	0.0%	4.3%
Government	9.7	10.6	9.9	-0.9	-0.2	-8.5%	-2.0%
Federal Government	1.6	1.6	1.7	0.0	-0.1	0.0%	-5.9%
State and Local Government	8.1	9.0	8.2	-0.9	-0.1	-10.0%	-1.2%

Note: 6) Prescott Metropolitan Area includes all of Yavapai County. For other notes and source, see end of Table 2

LAKE HAVASU CITY-KINGMAN MSA⁷

LAKE HAVASU CITY-KINGMAN MSA ⁷	June 2021(b)	May 2021(c)	June 2020(c)	Amount Change		Percent Change	
				Monthly	Over-Year	Monthly	Over-Year
				May '21 - June '21	June '20 - June '21	May '21 - June '21	June '20 - June '21
Total Nonfarm Payroll Employment^(c,d)	52.1	52.6	50.2	-0.5	1.9	-1.0%	3.8%
Private Sector	44.5	44.7	42.6	-0.2	1.9	-0.4%	4.5%
Government	7.6	7.9	7.6	-0.3	0.0	-3.8%	0.0%
Goods-Producing Industries	7.3	7.3	6.6	0.0	0.7	0.0%	10.6%
Manufacturing	3.1	3.1	3.0	0.0	0.1	0.0%	3.3%
Natural Resources and Construction	4.2	4.2	3.6	0.0	0.6	0.0%	16.7%
Service-Providing Industries	44.8	45.3	43.6	-0.5	1.2	-1.1%	2.8%
Private Service Providing	37.2	37.4	36.0	-0.2	1.2	-0.5%	3.3%
Trade, Transportation and Utilities	13.0	12.8	12.6	0.2	0.4	1.6%	3.2%
Information	0.5	0.5	0.4	0.0	0.1	0.0%	25.0%
Financial Activities	1.9	1.9	1.9	0.0	0.0	0.0%	0.0%
Professional and Business Services	3.1	3.3	4.0	-0.2	-0.9	-6.1%	-22.5%
Education and Health Services	8.7	9.0	8.6	-0.3	0.1	-3.3%	1.2%
Leisure and Hospitality	8.1	7.9	6.7	0.2	1.4	2.5%	20.9%
Other Services (except Public Administration)	1.9	2.0	1.8	-0.1	0.1	-5.0%	5.6%
Government	7.6	7.9	7.6	-0.3	0.0	-3.8%	0.0%
Federal Government	0.5	0.5	0.5	0.0	0.0	0.0%	0.0%
State and Local Government	7.1	7.4	7.1	-0.3	0.0	-4.1%	0.0%

Note: 7) Lake Havasu City-Kingman Metropolitan Area includes all of Mohave County
For other notes and source, see next page

Table 2 (Cont.)

Nonfarm Payroll Employment

(in Thousands, Not Seasonally Adjusted)

				Amount Change		Percent Change	
	June	May	June	Monthly	Over-Year	Monthly	Over-Year
	2021(b)	2021(c)	2020(c)	May '21 - June '21	June '20 - June '21	May '21 - June '21	June '20 - June '21
SIERRA VISTA-DOUGLAS MSA⁸							
Total Nonfarm Payroll Employment^(c,d)	35.0	35.1	33.6	-0.1	1.4	-0.3%	4.2%
Private Sector	24.5	24.3	23.3	0.2	1.2	0.8%	5.2%
Government	10.5	10.8	10.3	-0.3	0.2	-2.8%	1.9%
Goods-Producing Industries	4.4	4.3	3.6	0.1	0.8	2.3%	22.2%
Manufacturing	0.7	0.7	0.6	0.0	0.1	0.0%	16.7%
Natural Resources and Construction	3.7	3.6	3.0	0.1	0.7	2.8%	23.3%
Service-Providing Industries	30.6	30.8	30.0	-0.2	0.6	-0.6%	2.0%
Private Service Providing	20.1	20.0	19.7	0.1	0.4	0.5%	2.0%
Trade, Transportation and Utilities	6.1	6.1	6.1	0.0	0.0	0.0%	0.0%
Information	0.3	0.3	0.4	0.0	-0.1	0.0%	-25.0%
Financial Activities	0.9	0.9	0.8	0.0	0.1	0.0%	12.5%
Professional and Business Services	4.7	4.7	4.3	0.0	0.4	0.0%	9.3%
Education and Health Services	4.3	4.3	4.3	0.0	0.0	0.0%	0.0%
Leisure and Hospitality	3.1	3.0	3.1	0.1	0.0	3.3%	0.0%
Other Services (except Public Administration)	0.7	0.7	0.7	0.0	0.0	0.0%	0.0%
Government	10.5	10.8	10.3	-0.3	0.2	-2.8%	1.9%
Federal Government	4.8	4.8	4.9	0.0	-0.1	0.0%	-2.0%
State and Local Government	5.7	6.0	5.4	-0.3	0.3	-5.0%	5.6%

Note: 8) Sierra Vista Douglas Metropolitan Area includes all of Cochise County

Other notes and sources:

- a) Nonfarm employment at the state and substate level is produced from the monthly establishment survey by the Current Employment Statistics (CES) program of the Arizona Office of Employment and Population Statistics, in cooperation with U.S. Dept. of Labor, Bureau of Labor Statistics.

For more information on the establishment survey, see: <http://www.bls.gov/bls/empsitquickguide.htm>

- b) Preliminary and subject to revision the following month
c) Revised
d) By place of work; does not include agricultural workers, self-employed, unpaid family members, and domestic workers
e) Detail may not add up exactly due to rounding
MSA — Metropolitan Statistical Area
NA — Not Available

Source: Prepared by the Arizona Office of Economic Opportunity, in cooperation with the U.S. Dept. of Labor, Bureau of Labor Statistics

Labor Force

Prepared in Cooperation with the U.S. Department of Labor, Bureau of Labor Statistics
Arizona Office of Economic Opportunity

2021

Apache County

	JAN	FEB	MAR	APR	MAY	JUN	JUL	AUG	SEP	OCT	NOV	DEC	AVG
Civilian Labor Force	19,887	19,934	19,934	19,601	19,545	19,343							
Employment	17,560	17,524	17,712	17,414	17,217	16,697							
Unemployment	2,327	2,410	2,222	2,187	2,328	2,646							
Unemployment rate	11.7	12.1	11.1	11.2	11.9	13.7							

Adjusted to the Current Population Survey (CPS 2021) to reflect place of residence

Equal Opportunity Employer/ Program available in alternative format/ reasonable accommodations: 602-771-1110, TDD 1-800-367-8939

Labor Force

Prepared in Cooperation with the U.S. Department of Labor, Bureau of Labor Statistics
Arizona Office of Economic Opportunity

2021

Cochise County(Sierra-Vista Douglas MSA)

	JAN	FEB	MAR	APR	MAY	JUN	JUL	AUG	SEP	OCT	NOV	DEC	AVG
Civilian Labor Force	51,637	51,877	52,566	52,624	52,503	52,715							
Employment	48,591	48,497	49,461	49,437	49,124	49,054							
Unemployment	3,046	3,380	3,105	3,187	3,379	3,661							
Unemployment rate	5.9	6.5	5.9	6.1	6.4	6.9							

Adjusted to the Current Population Survey (CPS 2021) to reflect place of residence

Equal Opportunity Employer/ Program available in alternative format/ reasonable accommodations: 602-771-1110, TDD 1-800-367-8939

Labor Force

Prepared in Cooperation with the U.S. Department of Labor, Bureau of Labor Statistics
Arizona Office of Economic Opportunity

2021

Coconino County(Flagstaff MSA)

	JAN	FEB	MAR	APR	MAY	JUN	JUL	AUG	SEP	OCT	NOV	DEC	AVG
Civilian Labor Force	73,803	74,005	74,463	75,423	74,438	76,481							
Employment	67,301	67,352	68,491	69,694	68,428	69,790							
Unemployment	6,502	6,653	5,972	5,729	6,010	6,691							
Unemployment rate	8.8	9.0	8.0	7.6	8.1	8.7							

Adjusted to the Current Population Survey (CPS 2021) to reflect place of residence

Equal Opportunity Employer/ Program available in alternative format/ reasonable accomodations: 602-771-1110, TDD 1-800-367-8939

Labor Force

Prepared in Cooperation with the U.S. Department of Labor, Bureau of Labor Statistics

Arizona Office of Economic Opportunity

2021

Gila County

	JAN	FEB	MAR	APR	MAY	JUN	JUL	AUG	SEP	OCT	NOV	DEC	AVG
Civilian Labor Force	20,792	20,790	20,821	20,661	20,796	20,854							
Employment	19,333	19,265	19,437	19,280	19,368	19,309							
Unemployment	1,459	1,525	1,384	1,381	1,428	1,545							
Unemployment rate	7.0	7.3	6.6	6.7	6.9	7.4							

Adjusted to the Current Population Survey (CPS 2021) to reflect place of residence

Equal Opportunity Employer/ Program available in alternative format/ reasonable accomodations: 602-771-1110, TDD 1-800-367-8939

Labor Force

Prepared in Cooperation with the U.S. Department of Labor, Bureau of Labor Statistics

Arizona Office of Economic Opportunity

2021

Graham County

	JAN	FEB	MAR	APR	MAY	JUN	JUL	AUG	SEP	OCT	NOV	DEC	AVG
--	-----	-----	-----	-----	-----	-----	-----	-----	-----	-----	-----	-----	-----

Civilian Labor Force	16,146	16,704	16,657	16,496	16,449	16,085
Employment	15,157	15,705	15,759	15,633	15,535	15,076
Unemployment	989	999	898	863	914	1,009
Unemployment rate	6.1	6.0	5.4	5.2	5.6	6.3

Adjusted to the Current Population Survey (CPS 2021) to reflect place of residence

Equal Opportunity Employer/ Program available in alternative format/ reasonable accommodations: 602-771-1110, TDD 1-800-367-8939

Labor Force

Prepared in Cooperation with the U.S. Department of Labor, Bureau of Labor Statistics

Arizona Office of Economic Opportunity

2021

Greenlee County

	JAN	FEB	MAR	APR	MAY	JUN	JUL	AUG	SEP	OCT	NOV	DEC	AVG
Civilian Labor Force	4,449	4,466	4,472	4,538	4,537	4,532							
Employment	4,189	4,200	4,231	4,289	4,276	4,248							
Unemployment	260	266	241	249	261	284							
Unemployment rate	5.8	6.0	5.4	5.5	5.8	6.3							

Adjusted to the Current Population Survey (CPS 2021) to reflect place of residence

Equal Opportunity Employer/ Program available in alternative format/ reasonable accommodations: 602-771-1110, TDD 1-800-367-8939

Labor Force

Prepared in Cooperation with the U.S. Department of Labor, Bureau of Labor Statistics

Arizona Office of Economic Opportunity

2021

La Paz County

	JAN	FEB	MAR	APR	MAY	JUN	JUL	AUG	SEP	OCT	NOV	DEC	AVG
Civilian Labor Force	9,164	9,049	9,166	8,682	8,152	8,218							
Employment	8,606	8,422	8,577	8,079	7,529	7,531							
Unemployment	558	627	589	603	623	687							
Unemployment rate	6.1	6.9	6.4	6.9	7.6	8.4							

Adjusted to the Current Population Survey (CPS 2021) to reflect place of residence

Equal Opportunity Employer/ Program available in alternative format/ reasonable accommodations: 602-771-1110, TDD 1-800-367-8939

Labor Force

Prepared in Cooperation with the U.S. Department of Labor, Bureau of Labor Statistics

Arizona Office of Economic Opportunity

2021

Maricopa County

	JAN	FEB	MAR	APR	MAY	JUN	JUL	AUG	SEP	OCT	NOV	DEC	AVG
Civilian Labor Force	2,340,388	2,353,403	2,355,882	2,366,579	2,381,484	2,407,932							
Employment	2,186,220	2,195,662	2,212,397	2,223,685	2,234,732	2,249,835							
Unemployment	154,168	157,741	143,485	142,894	146,752	158,097							
Unemployment rate	6.6	6.7	6.1	6.0	6.2	6.6							

Adjusted to the Current Population Survey (CPS 2021) to reflect place of residence

Equal Opportunity Employer/ Program available in alternative format/ reasonable accommodations: 602-771-1110, TDD 1-800-367-8939

Labor Force

Prepared in Cooperation with the U.S. Department of Labor, Bureau of Labor Statistics

Arizona Office of Economic Opportunity

2021

Mohave County(Lake Havasu City-Kingman MSA)

	JAN	FEB	MAR	APR	MAY	JUN	JUL	AUG	SEP	OCT	NOV	DEC	AVG
Civilian Labor Force	87,431	88,307	88,749	88,593	89,413	90,054							
Employment	80,773	81,423	82,477	82,143	82,690	82,680							
Unemployment	6,658	6,884	6,272	6,450	6,723	7,374							
Unemployment rate	7.6	7.8	7.1	7.3	7.5	8.2							

Adjusted to the Current Population Survey (CPS 2021) to reflect place of residence

Equal Opportunity Employer/ Program available in alternative format/ reasonable accommodations: 602-771-1110, TDD 1-800-367-8939

Labor Force

Prepared in Cooperation with the U.S. Department of Labor, Bureau of Labor Statistics
Arizona Office of Economic Opportunity

2021

Navajo County

	JAN	FEB	MAR	APR	MAY	JUN	JUL	AUG	SEP	OCT	NOV	DEC	AVG
Civilian Labor Force	39,577	39,557	39,736	39,259	39,810	40,176							
Employment	35,984	35,778	36,301	35,873	36,233	36,188							
Unemployment	3,593	3,779	3,435	3,386	3,577	3,988							
Unemployment rate	9.1	9.6	8.6	8.6	9.0	9.9							

Adjusted to the Current Population Survey (CPS 2021) to reflect place of residence

Equal Opportunity Employer/ Program available in alternative format/ reasonable accommodations: 602-771-1110, TDD 1-800-367-8939

Labor Force

Prepared in Cooperation with the U.S. Department of Labor, Bureau of Labor Statistics
Arizona Office of Economic Opportunity

2021

Pima County(Tucson MSA)

	JAN	FEB	MAR	APR	MAY	JUN	JUL	AUG	SEP	OCT	NOV	DEC	AVG
Civilian Labor Force	495,480	496,831	499,062	500,208	503,693	497,659							
Employment	460,119	460,594	466,006	467,177	469,788	461,052							
Unemployment	35,361	36,237	33,056	33,031	33,905	36,607							
Unemployment rate	7.1	7.3	6.6	6.6	6.7	7.4							

Adjusted to the Current Population Survey (CPS 2021) to reflect place of residence

Equal Opportunity Employer/ Program available in alternative format/ reasonable accommodations: 602-771-1110, TDD 1-800-367-8939

Labor Force

Prepared in Cooperation with the U.S. Department of Labor, Bureau of Labor Statistics

Arizona Office of Economic Opportunity

2021

Pinal County

	JAN	FEB	MAR	APR	MAY	JUN	JUL	AUG	SEP	OCT	NOV	DEC	AVG
Civilian Labor Force	192,801	193,445	194,001	193,729	193,172	195,431							
Employment	179,893	179,972	181,642	181,362	180,243	181,423							
Unemployment	12,908	13,473	12,359	12,367	12,929	14,008							
Unemployment rate	6.7	7.0	6.4	6.4	6.7	7.2							

Adjusted to the Current Population Survey (CPS 2021) to reflect place of residence

Equal Opportunity Employer/ Program available in alternative format/ reasonable accommodations: 602-771-1110, TDD 1-800-367-8939

Labor Force

Prepared in Cooperation with the U.S. Department of Labor, Bureau of Labor Statistics

Arizona Office of Economic Opportunity

2021

Santa Cruz County

	JAN	FEB	MAR	APR	MAY	JUN	JUL	AUG	SEP	OCT	NOV	DEC	AVG
Civilian Labor Force	19,649	19,644	19,723	19,258	19,424	19,544							
Employment	17,600	17,504	17,692	17,234	17,323	17,147							
Unemployment	2,049	2,140	2,031	2,024	2,101	2,397							
Unemployment rate	10.4	10.9	10.3	10.5	10.8	12.3							

Adjusted to the Current Population Survey (CPS 2021) to reflect place of residence

Equal Opportunity Employer/ Program available in alternative format/ reasonable accommodations: 602-771-1110, TDD 1-800-367-8939

Labor Force

Prepared in Cooperation with the U.S. Department of Labor, Bureau of Labor Statistics

Arizona Office of Economic Opportunity

2021

Yavapai County(Prescott MSA)

	JAN	FEB	MAR	APR	MAY	JUN	JUL	AUG	SEP	OCT	NOV	DEC	AVG
Civilian Labor Force	107,130	107,604	108,886	109,270	109,940	110,494							
Employment	100,724	101,009	102,861	103,188	103,673	103,743							
Unemployment	6,406	6,595	6,025	6,082	6,267	6,751							
Unemployment rate	6.0	6.1	5.5	5.6	5.7	6.1							

Adjusted to the Current Population Survey (CPS 2021) to reflect place of residence

Equal Opportunity Employer/ Program available in alternative format/ reasonable accommodations: 602-771-1110, TDD 1-800-367-8939

Labor Force

Prepared in Cooperation with the U.S. Department of Labor, Bureau of Labor Statistics

Arizona Office of Economic Opportunity

2021

Yuma County(Yuma MSA)

	JAN	FEB	MAR	APR	MAY	JUN	JUL	AUG	SEP	OCT	NOV	DEC	AVG
Civilian Labor Force	94,563	94,625	95,250	94,629	94,653	97,087							
Employment	83,943	83,499	84,498	82,070	78,466	77,321							
Unemployment	10,620	11,126	10,752	12,559	16,187	19,766							
Unemployment rate	11.2	11.8	11.3	13.3	17.1	20.4							

Adjusted to the Current Population Survey (CPS 2021) to reflect place of residence

Equal Opportunity Employer/ Program available in alternative format/ reasonable accommodations: 602-771-1110, TDD 1-800-367-8939

Labor Force

Prepared in Cooperation with the U.S. Department of Labor, Bureau of Labor Statistics
Arizona Office of Economic Opportunity

2020

Apache County

	JAN	FEB	MAR	APR	MAY	JUN	JUL	AUG	SEP	OCT	NOV	DEC	AVG
Civilian Labor Force	20,946	20,710	20,855	20,336	20,229	19,741	20,030	19,948	20,246	19,795	19,748	19,763	20,195
Employment	18,588	18,551	18,403	16,952	17,515	16,349	16,510	17,644	17,926	17,785	17,661	17,486	17,614
Unemployment	2,358	2,159	2,452	3,384	2,714	3,392	3,520	2,304	2,320	2,010	2,087	2,277	2,581
Unemployment rate	11.3	10.4	11.8	16.6	13.4	17.2	17.6	11.6	11.5	10.2	10.6	11.5	12.8

Adjusted to the Current Population Survey (CPS 2021) to reflect place of residence

Equal Opportunity Employer/ Program available in alternative format/ reasonable accommodations: 602-771-1110, TDD 1-800-367-8939

Labor Force

Prepared in Cooperation with the U.S. Department of Labor, Bureau of Labor Statistics
Arizona Office of Economic Opportunity

2020

Cochise County(Sierra-Vista Douglas MSA)

	JAN	FEB	MAR	APR	MAY	JUN	JUL	AUG	SEP	OCT	NOV	DEC	AVG
Civilian Labor Force	51,646	51,765	52,122	50,687	51,923	51,420	52,447	51,675	52,513	52,518	52,813	52,415	51,995
Employment	48,600	48,933	48,963	44,722	47,386	46,729	47,661	48,638	49,495	49,824	50,047	49,420	48,368
Unemployment	3,046	2,832	3,159	5,965	4,537	4,691	4,786	3,037	3,018	2,694	2,766	2,995	3,627
Unemployment rate	5.9	5.5	6.1	11.8	8.7	9.1	9.1	5.9	5.7	5.1	5.2	5.7	7.0

Adjusted to the Current Population Survey (CPS 2021) to reflect place of residence

Equal Opportunity Employer/ Program available in alternative format/ reasonable accommodations: 602-771-1110, TDD 1-800-367-8939

Labor Force

Prepared in Cooperation with the U.S. Department of Labor, Bureau of Labor Statistics
Arizona Office of Economic Opportunity

2020

Coconino County(Flagstaff MSA)

	JAN	FEB	MAR	APR	MAY	JUN	JUL	AUG	SEP	OCT	NOV	DEC	AVG
Civilian Labor Force	76,940	76,899	77,285	73,402	74,219	75,247	75,980	74,350	75,315	74,941	74,894	73,895	75,280
Employment	71,851	72,265	72,012	60,028	63,941	65,221	66,317	68,193	69,310	69,529	69,342	67,814	67,985
Unemployment	5,089	4,634	5,273	13,374	10,278	10,026	9,663	6,157	6,005	5,412	5,552	6,081	7,295
Unemployment rate	6.6	6.0	6.8	18.2	13.8	13.3	12.7	8.3	8.0	7.2	7.4	8.2	9.7

Adjusted to the Current Population Survey (CPS 2021) to reflect place of residence

Equal Opportunity Employer/ Program available in alternative format/ reasonable accomodations: 602-771-1110, TDD 1-800-367-8939

Labor Force

Prepared in Cooperation with the U.S. Department of Labor, Bureau of Labor Statistics

Arizona Office of Economic Opportunity

2020

Gila County

	JAN	FEB	MAR	APR	MAY	JUN	JUL	AUG	SEP	OCT	NOV	DEC	AVG
Civilian Labor Force	20,955	20,736	20,757	20,820	21,385	21,034	21,232	21,137	21,261	20,988	20,996	20,796	21,008
Employment	19,679	19,551	19,407	18,153	19,415	19,006	19,089	19,752	19,860	19,709	19,657	19,366	19,387
Unemployment	1,276	1,185	1,350	2,667	1,970	2,028	2,143	1,385	1,401	1,279	1,339	1,430	1,621
Unemployment rate	6.1	5.7	6.5	12.8	9.2	9.6	10.1	6.6	6.6	6.1	6.4	6.9	7.7

Adjusted to the Current Population Survey (CPS 2021) to reflect place of residence

Equal Opportunity Employer/ Program available in alternative format/ reasonable accomodations: 602-771-1110, TDD 1-800-367-8939

Labor Force

Prepared in Cooperation with the U.S. Department of Labor, Bureau of Labor Statistics

Arizona Office of Economic Opportunity

2020

Graham County

	JAN	FEB	MAR	APR	MAY	JUN	JUL	AUG	SEP	OCT	NOV	DEC	AVG
--	-----	-----	-----	-----	-----	-----	-----	-----	-----	-----	-----	-----	-----

Civilian Labor Force	15,626	16,037	16,078	15,379	15,970	15,581	15,333	15,664	16,307	16,270	16,377	16,407	15,919
Employment	14,824	15,262	15,204	14,110	14,815	14,174	13,883	14,769	15,414	15,481	15,548	15,449	14,911
Unemployment	802	775	874	1,269	1,155	1,407	1,450	895	893	789	829	958	1,008
Unemployment rate	5.1	4.8	5.4	8.3	7.2	9.0	9.5	5.7	5.5	4.8	5.1	5.8	6.3

Adjusted to the Current Population Survey (CPS 2021) to reflect place of residence

Equal Opportunity Employer/ Program available in alternative format/ reasonable accommodations: 602-771-1110, TDD 1-800-367-8939

Labor Force

Prepared in Cooperation with the U.S. Department of Labor, Bureau of Labor Statistics

Arizona Office of Economic Opportunity

2020

Greenlee County

	JAN	FEB	MAR	APR	MAY	JUN	JUL	AUG	SEP	OCT	NOV	DEC	AVG
Civilian Labor Force	4,509	4,536	4,586	4,484	4,580	4,444	4,434	4,371	4,387	4,417	4,386	4,313	4,454
Employment	4,334	4,367	4,391	4,223	4,344	4,098	4,060	4,132	4,153	4,195	4,158	4,063	4,210
Unemployment	175	169	195	261	236	346	374	239	234	222	228	250	244
Unemployment rate	3.9	3.7	4.3	5.8	5.2	7.8	8.4	5.5	5.3	5.0	5.2	5.8	5.5

Adjusted to the Current Population Survey (CPS 2021) to reflect place of residence

Equal Opportunity Employer/ Program available in alternative format/ reasonable accommodations: 602-771-1110, TDD 1-800-367-8939

Labor Force

Prepared in Cooperation with the U.S. Department of Labor, Bureau of Labor Statistics

Arizona Office of Economic Opportunity

2020

La Paz County

	JAN	FEB	MAR	APR	MAY	JUN	JUL	AUG	SEP	OCT	NOV	DEC	AVG
Civilian Labor Force	9,478	9,438	9,803	8,551	8,492	8,375	8,323	8,426	9,009	9,253	9,490	9,112	8,979
Employment	8,880	8,876	9,166	7,701	7,835	7,636	7,538	7,839	8,395	8,737	8,964	8,549	8,343
Unemployment	598	562	637	850	657	739	785	587	614	516	526	563	636
Unemployment rate	6.3	6.0	6.5	9.9	7.7	8.8	9.4	7.0	6.8	5.6	5.5	6.2	7.1

Adjusted to the Current Population Survey (CPS 2021) to reflect place of residence

Equal Opportunity Employer/ Program available in alternative format/ reasonable accommodations: 602-771-1110, TDD 1-800-367-8939

Labor Force

Prepared in Cooperation with the U.S. Department of Labor, Bureau of Labor Statistics

Arizona Office of Economic Opportunity

2020

Maricopa County

	JAN	FEB	MAR	APR	MAY	JUN	JUL	AUG	SEP	OCT	NOV	DEC	AVG
Civilian Labor Force	2,337,504	2,345,084	2,332,170	2,297,373	2,362,690	2,327,328	2,362,138	2,300,653	2,321,013	2,320,245	2,336,563	2,336,776	2,331,628
Employment	2,239,858	2,252,395	2,226,524	1,986,947	2,122,913	2,088,036	2,118,630	2,147,622	2,168,495	2,179,099	2,193,429	2,187,252	2,159,267
Unemployment	97,646	92,689	105,646	310,426	239,777	239,292	243,508	153,031	152,518	141,146	143,134	149,524	172,361
Unemployment rate	4.2	4.0	4.5	13.5	10.1	10.3	10.3	6.7	6.6	6.1	6.1	6.4	7.4

Adjusted to the Current Population Survey (CPS 2021) to reflect place of residence

Equal Opportunity Employer/ Program available in alternative format/ reasonable accommodations: 602-771-1110, TDD 1-800-367-8939

Labor Force

Prepared in Cooperation with the U.S. Department of Labor, Bureau of Labor Statistics

Arizona Office of Economic Opportunity

2020

Mohave County(Lake Havasu City-Kingman MSA)

	JAN	FEB	MAR	APR	MAY	JUN	JUL	AUG	SEP	OCT	NOV	DEC	AVG
Civilian Labor Force	88,203	88,057	87,760	89,892	92,762	89,666	90,985	87,367	88,226	87,610	87,518	86,877	88,743
Employment	82,771	83,027	82,037	71,600	77,645	77,940	79,807	80,113	80,973	81,297	81,213	80,250	79,889
Unemployment	5,432	5,030	5,723	18,292	15,117	11,726	11,178	7,254	7,253	6,313	6,305	6,627	8,854
Unemployment rate	6.2	5.7	6.5	20.3	16.3	13.1	12.3	8.3	8.2	7.2	7.2	7.6	10.0

Adjusted to the Current Population Survey (CPS 2021) to reflect place of residence

Equal Opportunity Employer/ Program available in alternative format/ reasonable accommodations: 602-771-1110, TDD 1-800-367-8939

Labor Force

Prepared in Cooperation with the U.S. Department of Labor, Bureau of Labor Statistics
Arizona Office of Economic Opportunity

2020

Navajo County

	JAN	FEB	MAR	APR	MAY	JUN	JUL	AUG	SEP	OCT	NOV	DEC	AVG
Civilian Labor Force	40,290	40,026	40,313	39,760	40,732	40,174	40,711	40,774	41,500	40,628	40,282	39,844	40,419
Employment	36,866	36,850	36,704	33,587	35,963	34,723	35,188	37,120	37,895	37,524	37,075	36,373	36,322
Unemployment	3,424	3,176	3,609	6,173	4,769	5,451	5,523	3,654	3,605	3,104	3,207	3,471	4,097
Unemployment rate	8.5	7.9	9.0	15.5	11.7	13.6	13.6	9.0	8.7	7.6	8.0	8.7	10.1

Adjusted to the Current Population Survey (CPS 2021) to reflect place of residence

Equal Opportunity Employer/ Program available in alternative format/ reasonable accommodations: 602-771-1110, TDD 1-800-367-8939

Labor Force

Prepared in Cooperation with the U.S. Department of Labor, Bureau of Labor Statistics
Arizona Office of Economic Opportunity

2020

Pima County(Tucson MSA)

	JAN	FEB	MAR	APR	MAY	JUN	JUL	AUG	SEP	OCT	NOV	DEC	AVG
Civilian Labor Force	498,831	503,706	500,907	492,397	505,090	495,268	499,389	486,417	491,929	489,785	494,410	493,760	495,991
Employment	475,526	481,702	475,882	424,014	452,686	442,924	446,115	453,555	458,821	458,499	462,565	459,909	457,683
Unemployment	23,305	22,004	25,025	68,383	52,404	52,344	53,274	32,862	33,108	31,286	31,845	33,851	38,308
Unemployment rate	4.7	4.4	5.0	13.9	10.4	10.6	10.7	6.8	6.7	6.4	6.4	6.9	7.7

Adjusted to the Current Population Survey (CPS 2021) to reflect place of residence

Equal Opportunity Employer/ Program available in alternative format/ reasonable accommodations: 602-771-1110, TDD 1-800-367-8939

Labor Force

Prepared in Cooperation with the U.S. Department of Labor, Bureau of Labor Statistics

Arizona Office of Economic Opportunity

2020

Pinal County

	JAN	FEB	MAR	APR	MAY	JUN	JUL	AUG	SEP	OCT	NOV	DEC	AVG
Civilian Labor Force	193,554	193,833	193,855	185,725	190,359	188,515	191,355	187,117	190,517	191,578	193,748	192,731	191,074
Employment	183,696	184,511	183,226	161,902	171,674	169,039	171,335	174,683	177,879	180,024	181,932	180,188	176,674
Unemployment	9,858	9,322	10,629	23,823	18,685	19,476	20,020	12,434	12,638	11,554	11,816	12,543	14,400
Unemployment rate	5.1	4.8	5.5	12.8	9.8	10.3	10.5	6.6	6.6	6.0	6.1	6.5	7.5

Adjusted to the Current Population Survey (CPS 2021) to reflect place of residence

Equal Opportunity Employer/ Program available in alternative format/ reasonable accommodations: 602-771-1110, TDD 1-800-367-8939

Labor Force

Prepared in Cooperation with the U.S. Department of Labor, Bureau of Labor Statistics

Arizona Office of Economic Opportunity

2020

Santa Cruz County

	JAN	FEB	MAR	APR	MAY	JUN	JUL	AUG	SEP	OCT	NOV	DEC	AVG
Civilian Labor Force	20,100	19,887	20,033	19,417	19,855	19,454	18,974	18,674	18,953	18,911	19,420	19,462	19,429
Employment	18,456	18,429	18,269	16,129	17,333	16,756	15,964	16,489	16,714	16,933	17,507	17,524	17,209
Unemployment	1,644	1,458	1,764	3,288	2,522	2,698	3,010	2,185	2,239	1,978	1,913	1,938	2,220
Unemployment rate	8.2	7.3	8.8	16.9	12.7	13.9	15.9	11.7	11.8	10.5	9.9	10.0	11.4

Adjusted to the Current Population Survey (CPS 2021) to reflect place of residence

Equal Opportunity Employer/ Program available in alternative format/ reasonable accommodations: 602-771-1110, TDD 1-800-367-8939

Labor Force

Prepared in Cooperation with the U.S. Department of Labor, Bureau of Labor Statistics

Arizona Office of Economic Opportunity

2020

Yavapai County(Prescott MSA)

	JAN	FEB	MAR	APR	MAY	JUN	JUL	AUG	SEP	OCT	NOV	DEC	AVG
Civilian Labor Force	107,161	106,946	106,658	105,257	107,942	107,386	108,907	106,230	107,243	106,874	107,075	106,138	106,985
Employment	102,172	102,243	101,392	88,546	96,397	96,731	98,338	99,618	100,782	100,871	100,969	99,676	98,978
Unemployment	4,989	4,703	5,266	16,711	11,545	10,655	10,569	6,612	6,461	6,003	6,106	6,462	8,007
Unemployment rate	4.7	4.4	4.9	15.9	10.7	9.9	9.7	6.2	6.0	5.6	5.7	6.1	7.5

Adjusted to the Current Population Survey (CPS 2021) to reflect place of residence

Equal Opportunity Employer/ Program available in alternative format/ reasonable accommodations: 602-771-1110, TDD 1-800-367-8939

Labor Force

Prepared in Cooperation with the U.S. Department of Labor, Bureau of Labor Statistics

Arizona Office of Economic Opportunity

2020

Yuma County(Yuma MSA)

	JAN	FEB	MAR	APR	MAY	JUN	JUL	AUG	SEP	OCT	NOV	DEC	AVG
Civilian Labor Force	101,528	99,384	102,359	99,665	97,109	95,892	99,582	95,324	98,890	96,052	97,409	94,245	98,120
Employment	87,258	87,197	87,812	74,785	76,216	74,191	74,898	78,001	81,794	83,936	85,959	83,670	81,310
Unemployment	14,270	12,187	14,547	24,880	20,893	21,701	24,684	17,323	17,096	12,116	11,450	10,575	16,810
Unemployment rate	14.1	12.3	14.2	25.0	21.5	22.6	24.8	18.2	17.3	12.6	11.8	11.2	17.1

Adjusted to the Current Population Survey (CPS 2021) to reflect place of residence

Equal Opportunity Employer/ Program available in alternative format/ reasonable accommodations: 602-771-1110, TDD 1-800-367-8939

Nonfarm Employment

Prepared in Cooperation with the U.S. Department of Labor, Bureau of Labor Statistics

Arizona Office of Economic Opportunity

2021

Apache County

	JAN	FEB	MAR	APR	MAY	JUN	JUL	AUG	SEP	OCT	NOV	DEC	AVG
Total Nonfarm	16,925	16,975	17,100	16,850	16,775	16,100							
Total Private	6,875	6,850	6,950	6,850	6,850	6,900							
Goods Producing	575	575	625	625	600	600							
Service-Providing	16,350	16,400	16,475	16,225	16,175	15,500							
Private Service-Providing	6,300	6,275	6,325	6,225	6,250	6,300							
Trade, Transportation, and Utilities	1,875	1,875	1,900	1,875	1,900	1,950							
Other Private Service-Providing	4,425	4,400	4,425	4,350	4,350	4,350							
Government	10,050	10,125	10,150	10,000	9,925	9,200							
Federal Government	2,675	2,725	2,725	2,775	2,825	2,850							
State and Local Government	7,375	7,400	7,425	7,225	7,100	6,350							

Benchmark year 2020, quarter 1, rev. 7/9/2021

Equal Opportunity Employer/ Program available in alternative format/ reasonable accommodations: 602-771-1110, TDD 1-800-367-8939

Nonfarm Employment

Prepared in Cooperation with the U.S. Department of Labor, Bureau of Labor Statistics

Arizona Office of Economic Opportunity

2021

Cochise County(Sierra-Vista Douglas MSA)

	JAN	FEB	MAR	APR	MAY	JUN	JUL	AUG	SEP	OCT	NOV	DEC	AVG
Total Nonfarm	34,300	34,600	34,900	35,100	35,100	35,000							
Total Private	23,800	24,000	24,100	24,300	24,300	24,500							
Goods Producing	4,100	4,200	4,200	4,300	4,300	4,400							
Mining and Construction	3,500	3,500	3,500	3,600	3,600	3,700							
Manufacturing	600	700	700	700	700	700							
Service-Providing	30,200	30,400	30,700	30,800	30,800	30,600							
Private Service-Providing	19,700	19,800	19,900	20,000	20,000	20,100							
Trade, Transportation, and Utilities	6,200	6,200	6,100	6,000	6,100	6,100							
Information	300	300	300	300	300	300							
Financial Activities	800	800	900	900	900	900							
Professional and Business Services	4,500	4,500	4,600	4,700	4,700	4,700							

Educational and Health Services	4,300	4,300	4,300	4,400	4,300	4,300
Leisure and Hospitality	2,900	3,000	3,000	3,000	3,000	3,100
Other Services	700	700	700	700	700	700
Government	10,500	10,600	10,800	10,800	10,800	10,500
Federal Government	4,800	4,800	4,800	4,800	4,800	4,800
State and Local Government	5,700	5,800	6,000	6,000	6,000	5,700

Benchmark year 2020, quarter 1, rev. 7/9/2021

Equal Opportunity Employer/ Program available in alternative format/ reasonable accommodations: 602-771-1110, TDD 1-800-367-8939

Nonfarm Employment

Prepared in Cooperation with the U.S. Department of Labor, Bureau of Labor Statistics

Arizona Office of Economic Opportunity

2021

Coconino County(Flagstaff MSA)

	JAN	FEB	MAR	APR	MAY	JUN	JUL	AUG	SEP	OCT	NOV	DEC	AVG
Total Nonfarm	61,700	62,000	62,900	64,300	63,200	64,300							
Total Private	43,200	43,700	44,400	45,700	45,700	47,200							
Goods Producing	6,400	6,400	6,500	6,600	6,600	6,800							
Mining and Construction	2,600	2,600	2,600	2,700	2,700	2,800							
Manufacturing	3,800	3,800	3,900	3,900	3,900	4,000							
Service-Providing	55,300	55,600	56,400	57,700	56,600	57,500							
Private Service-Providing	36,800	37,300	37,900	39,100	39,100	40,400							
Trade, Transportation, and Utilities	8,700	8,700	8,700	8,700	8,800	9,200							
Information	400	400	400	400	400	400							
Financial Activities	1,400	1,400	1,400	1,400	1,400	1,400							
Professional and Business Services	2,900	2,600	2,700	3,000	3,000	3,000							
Educational and Health Services	9,100	9,200	9,200	9,100	9,100	9,000							
Leisure and Hospitality	12,600	13,300	13,800	14,800	14,600	15,600							
Other Services	1,700	1,700	1,700	1,700	1,800	1,800							
Government	18,500	18,300	18,500	18,600	17,500	17,100							
Federal Government	2,400	2,400	2,500	2,700	2,900	2,900							
State and Local Government	16,100	15,900	16,000	15,900	14,600	14,200							

Benchmark year 2020, quarter 1, rev. 7/9/2021

Equal Opportunity Employer/ Program available in alternative format/ reasonable accommodations: 602-771-1110, TDD 1-800-367-8939

Nonfarm Employment

Prepared in Cooperation with the U.S. Department of Labor, Bureau of Labor Statistics

Arizona Office of Economic Opportunity

2021
Gila County

	JAN	FEB	MAR	APR	MAY	JUN	JUL	AUG	SEP	OCT	NOV	DEC	AVG
Total Nonfarm	14,025	14,075	14,125	14,100	14,300	14,150							
Total Private	8,950	8,950	9,000	8,850	9,025	9,075							
Goods Producing	2,725	2,700	2,700	2,725	2,750	2,725							
Service-Providing	11,300	11,375	11,425	11,375	11,550	11,425							
Private Service-Providing	6,225	6,250	6,300	6,125	6,275	6,350							
Trade, Transportation, and Utilities	2,250	2,225	2,250	2,225	2,275	2,300							
Other Private Service-Providing	3,975	4,025	4,050	3,900	4,000	4,050							
Government	5,075	5,125	5,125	5,250	5,275	5,075							
Federal Government	250	250	275	325	350	350							
State and Local Government	4,825	4,875	4,850	4,925	4,925	4,725							

Benchmark year 2020, quarter 1, rev. 7/9/2021

Equal Opportunity Employer/ Program available in alternative format/ reasonable accommodations: 602-771-1110, TDD 1-800-367-8939

Nonfarm Employment

Prepared in Cooperation with the U.S. Department of Labor, Bureau of Labor Statistics

Arizona Office of Economic Opportunity

2021
Graham County

	JAN	FEB	MAR	APR	MAY	JUN	JUL	AUG	SEP	OCT	NOV	DEC	AVG
Total Nonfarm	9,525	9,925	9,950	9,850	9,850	9,500							
Total Private	6,875	6,975	7,000	6,925	6,975	7,000							
Goods Producing	2,000	2,050	2,075	2,050	2,050	2,075							
Service-Providing	7,525	7,875	7,875	7,800	7,800	7,425							
Private Service-Providing	4,875	4,925	4,925	4,875	4,925	4,925							
Trade, Transportation, and Utilities	1,950	1,950	1,950	1,950	1,975	1,975							
Other Private Service-Providing	2,925	2,975	2,975	2,925	2,950	2,950							
Government	2,650	2,950	2,950	2,925	2,875	2,500							
Federal Government	400	400	400	425	425	425							
State and Local Government	2,250	2,550	2,550	2,500	2,450	2,075							

Benchmark year 2020, quarter 1, rev. 7/9/2021

Equal Opportunity Employer/ Program available in alternative format/ reasonable accommodations: 602-771-1110, TDD 1-800-367-8939

Nonfarm Employment

Prepared in Cooperation with the U.S. Department of Labor, Bureau of Labor Statistics
 Arizona Office of Economic Opportunity

2021
 Greenlee County

	JAN	FEB	MAR	APR	MAY	JUN	JUL	AUG	SEP	OCT	NOV	DEC	AVG
Total Nonfarm	4,950	4,975	5,000	5,100	5,075	5,025							
Total Private	4,375	4,400	4,425	4,500	4,500	4,475							
Goods Producing	3,525	3,550	3,575	3,650	3,625	3,600							
Service-Providing	1,425	1,425	1,425	1,450	1,450	1,425							
Private Service-Providing	850	850	850	850	875	875							
Trade, Transportation, and Utilities	500	500	500	500	500	500							
Other Private Service-Providing	350	350	350	350	375	375							
Government	575	575	575	600	575	550							
Federal Government	50	50	50	50	50	50							
State and Local Government	525	525	525	550	525	500							

Benchmark year 2020, quarter 1, rev. 7/9/2021

Equal Opportunity Employer/ Program available in alternative format/ reasonable accommodations: 602-771-1110, TDD 1-800-367-8939

Nonfarm Employment

Prepared in Cooperation with the U.S. Department of Labor, Bureau of Labor Statistics
 Arizona Office of Economic Opportunity

2021
 La Paz County

	JAN	FEB	MAR	APR	MAY	JUN	JUL	AUG	SEP	OCT	NOV	DEC	AVG
Total Nonfarm	5,250	5,325	5,300	5,175	5,225	5,200							
Total Private	3,225	3,300	3,300	3,200	3,250	3,250							
Goods Producing	200	200	225	225	225	225							
Service-Providing	5,050	5,125	5,075	4,950	5,000	4,975							
Private Service-Providing	3,025	3,100	3,075	2,975	3,025	3,025							
Trade, Transportation, and Utilities	1,675	1,675	1,675	1,650	1,650	1,650							
Other Private Service-Providing	1,350	1,425	1,400	1,325	1,375	1,375							
Government	2,025	2,025	2,000	1,975	1,975	1,950							
Federal Government	375	375	375	375	375	375							
State and Local Government	1,650	1,650	1,625	1,600	1,600	1,575							

Benchmark year 2020, quarter 1, rev. 7/9/2021

Equal Opportunity Employer/ Program available in alternative format/ reasonable accommodations: 602-771-1110, TDD 1-800-367-8939

Nonfarm Employment

Prepared in Cooperation with the U.S. Department of Labor, Bureau of Labor Statistics

Arizona Office of Economic Opportunity

2021

Maricopa County

	JAN	FEB	MAR	APR	MAY	JUN	JUL	AUG	SEP	OCT	NOV	DEC	AVG
Total Nonfarm	2,067,000	2,080,300	2,090,900	2,098,000	2,100,500	2,106,900							
Total Private	1,845,300	1,856,800	1,867,200	1,873,600	1,882,000	1,905,400							
Goods Producing	261,000	260,400	264,100	264,600	265,600	268,400							
Mining and Construction	131,500	130,000	132,700	133,100	133,700	135,700							
Manufacturing	129,500	130,400	131,400	131,500	131,900	132,700							
Service-Providing	1,806,000	1,819,900	1,826,800	1,833,400	1,834,900	1,838,500							
Private Service-Providing	1,584,300	1,596,400	1,603,100	1,609,000	1,616,400	1,637,000							
Trade, Transportation, and Utilities	411,300	415,100	416,600	415,000	418,300	426,800							
Information	37,100	37,600	36,500	36,200	36,100	36,300							
Financial Activities	201,800	202,000	201,400	202,700	203,100	204,300							
Professional and Business Services	355,000	355,900	354,000	355,900	359,100	364,400							
Educational and Health Services	336,100	337,700	339,500	340,700	339,800	341,100							
Leisure and Hospitality	188,800	192,900	199,000	203,100	204,500	207,300							
Other Services	54,200	55,200	56,100	55,400	55,500	56,800							
Government	221,700	223,500	223,700	224,400	218,500	201,500							
Federal Government	22,100	22,200	22,100	22,000	22,200	22,300							
State and Local Government	199,600	201,300	201,600	202,400	196,300	179,200							

Benchmark year 2020, quarter 1, rev. 7/9/2021

Equal Opportunity Employer/ Program available in alternative format/ reasonable accommodations: 602-771-1110, TDD 1-800-367-8939

Nonfarm Employment

Prepared in Cooperation with the U.S. Department of Labor, Bureau of Labor Statistics

Arizona Office of Economic Opportunity

2021

Mohave County(Lake Havasu City-Kingman MSA)

	JAN	FEB	MAR	APR	MAY	JUN	JUL	AUG	SEP	OCT	NOV	DEC	AVG
Total Nonfarm	51,900	52,400	52,800	52,500	52,600	52,100							
Total Private	44,000	44,400	44,800	44,400	44,700	44,500							
Goods Producing	6,900	6,900	7,000	7,200	7,300	7,300							

Mining and Construction	3,900	3,900	4,000	4,200	4,200	4,200
Manufacturing	3,000	3,000	3,000	3,000	3,100	3,100
Service-Providing	45,000	45,500	45,800	45,300	45,300	44,800
Private Service-Providing	37,100	37,500	37,800	37,200	37,400	37,200
Trade, Transportation, and Utilities	12,900	13,100	13,000	12,600	12,800	13,000
Information	500	500	400	500	500	500
Financial Activities	1,900	1,900	1,900	1,900	1,900	1,900
Professional and Business Services	3,600	3,500	3,600	3,400	3,300	3,100
Educational and Health Services	9,000	9,100	9,100	9,100	9,000	8,700
Leisure and Hospitality	7,300	7,500	7,900	7,800	7,900	8,100
Other Services	1,900	1,900	1,900	1,900	2,000	1,900
Government	7,900	8,000	8,000	8,100	7,900	7,600
Federal Government	500	500	500	500	500	500
State and Local Government	7,400	7,500	7,500	7,600	7,400	7,100

Benchmark year 2020, quarter 1, rev. 7/9/2021

Equal Opportunity Employer/ Program available in alternative format/ reasonable accomodations: 602-771-1110, TDD 1-800-367-8939

Nonfarm Employment

Prepared in Cooperation with the U.S. Department of Labor, Bureau of Labor Statistics

Arizona Office of Economic Opportunity

2021

Navajo County

	JAN	FEB	MAR	APR	MAY	JUN	JUL	AUG	SEP	OCT	NOV	DEC	AVG
Total Nonfarm	25,325	25,375	25,575	25,400	25,875	25,725							
Total Private	15,900	15,900	16,000	15,900	16,300	16,625							
Goods Producing	1,475	1,475	1,475	1,475	1,475	1,550							
Mining and Construction	1,150	1,175	1,175	1,175	1,175	1,225							
Manufacturing	325	300	300	300	300	325							
Service-Providing	23,850	23,900	24,100	23,925	24,400	24,175							
Private Service-Providing	14,425	14,425	14,525	14,425	14,825	15,075							
Trade, Transportation, and Utilities	4,700	4,650	4,700	4,725	4,850	4,950							
Information	200	175	175	150	150	150							
Financial Activities	575	575	575	550	525	550							
Professional and Business Services	1,225	1,250	1,275	1,275	1,300	1,325							
Educational and Health Services	4,400	4,425	4,425	4,400	4,400	4,300							
Leisure and Hospitality	2,875	2,900	2,950	2,900	3,175	3,350							
Other Services	450	450	425	425	425	450							
Government	9,425	9,475	9,575	9,500	9,575	9,100							

Federal Government	1,950	1,975	2,025	2,075	2,150	2,200
State and Local Government	7,475	7,500	7,550	7,425	7,425	6,900

Benchmark year 2020, quarter 1, rev. 7/9/2021

Equal Opportunity Employer/ Program available in alternative format/ reasonable accommodations: 602-771-1110, TDD 1-800-367-8939

Nonfarm Employment

Prepared in Cooperation with the U.S. Department of Labor, Bureau of Labor Statistics

Arizona Office of Economic Opportunity

2021

Pima County(Tucson MSA)

	JAN	FEB	MAR	APR	MAY	JUN	JUL	AUG	SEP	OCT	NOV	DEC	AVG
Total Nonfarm	374,000	375,600	378,500	379,200	379,600	369,500							
Total Private	300,100	301,200	303,900	304,500	305,500	305,100							
Goods Producing	47,200	47,200	47,500	47,400	47,700	48,400							
Mining and Construction	20,000	20,000	20,200	20,300	20,200	20,500							
Manufacturing	27,200	27,200	27,300	27,100	27,500	27,900							
Service-Providing	326,800	328,400	331,000	331,800	331,900	321,100							
Private Service-Providing	252,900	254,000	256,400	257,100	257,800	256,700							
Trade, Transportation, and Utilities	68,000	68,000	68,200	67,200	67,800	68,700							
Information	5,000	5,100	5,000	5,000	5,100	4,900							
Financial Activities	17,600	18,000	18,100	18,100	18,100	18,100							
Professional and Business Services	47,100	47,100	47,000	47,000	46,400	46,100							
Educational and Health Services	67,000	67,300	68,300	68,700	68,500	66,400							
Leisure and Hospitality	35,500	35,600	36,800	38,100	39,200	39,600							
Other Services	12,700	12,900	13,000	13,000	12,700	12,900							
Government	73,900	74,400	74,600	74,700	74,100	64,400							
Federal Government	12,800	12,800	12,800	12,800	12,800	12,700							
State and Local Government	61,100	61,600	61,800	61,900	61,300	51,700							

Benchmark year 2020, quarter 1, rev. 7/9/2021

Equal Opportunity Employer/ Program available in alternative format/ reasonable accommodations: 602-771-1110, TDD 1-800-367-8939

Nonfarm Employment

Prepared in Cooperation with the U.S. Department of Labor, Bureau of Labor Statistics

Arizona Office of Economic Opportunity

2021

Pinal County

	JAN	FEB	MAR	APR	MAY	JUN	JUL	AUG	SEP	OCT	NOV	DEC	AVG
Total Nonfarm	61,625	62,375	62,525	61,150	61,325	60,175							
Total Private	42,650	43,125	43,275	41,950	42,075	41,850							
Goods Producing	7,175	7,175	7,200	7,100	7,150	7,200							
Mining and Construction	3,275	3,250	3,250	3,200	3,200	3,225							
Manufacturing	3,900	3,925	3,950	3,900	3,950	3,975							
Service-Providing	54,450	55,200	55,325	54,050	54,175	52,975							
Private Service-Providing	35,475	35,950	36,075	34,850	34,925	34,650							
Trade, Transportation, and Utilities	12,825	12,900	12,950	12,775	12,875	12,950							
Information	425	425	425	400	400	400							
Financial Activities	1,475	1,500	1,500	1,400	1,375	1,375							
Professional and Business Services	6,325	6,275	6,300	6,300	6,225	6,200							
Educational and Health Services	6,625	6,675	6,700	6,625	6,675	6,350							
Leisure and Hospitality	6,400	6,775	6,825	6,050	6,050	6,025							
Other Services	1,400	1,400	1,375	1,300	1,325	1,350							
Government	18,975	19,250	19,250	19,200	19,250	18,325							
Federal Government	1,625	1,625	1,625	1,625	1,625	1,625							
State and Local Government	17,350	17,625	17,625	17,575	17,625	16,700							

Benchmark year 2020, quarter 1, rev. 7/9/2021

Equal Opportunity Employer/ Program available in alternative format/ reasonable accommodations: 602-771-1110, TDD 1-800-367-8939

Nonfarm Employment

Prepared in Cooperation with the U.S. Department of Labor, Bureau of Labor Statistics

Arizona Office of Economic Opportunity

2021

Santa Cruz County

	JAN	FEB	MAR	APR	MAY	JUN	JUL	AUG	SEP	OCT	NOV	DEC	AVG
Total Nonfarm	12,800	12,875	12,825	12,550	12,725	12,450							
Total Private	8,975	9,000	8,975	8,700	8,850	8,700							
Goods Producing	575	550	550	550	575	550							
Service-Providing	12,225	12,325	12,275	12,000	12,150	11,900							
Private Service-Providing	8,400	8,450	8,425	8,150	8,275	8,150							
Trade, Transportation, and Utilities	5,500	5,525	5,500	5,350	5,400	5,350							
Other Private Service-Providing	2,900	2,925	2,925	2,800	2,875	2,800							
Government	3,825	3,875	3,850	3,850	3,875	3,750							
Federal Government	1,850	1,875	1,875	1,875	1,875	1,900							
State and Local Government	1,975	2,000	1,975	1,975	2,000	1,850							

Benchmark year 2020, quarter 1, rev. 7/9/2021

Equal Opportunity Employer/ Program available in alternative format/ reasonable accommodations: 602-771-1110, TDD 1-800-367-8939

Nonfarm Employment

Prepared in Cooperation with the U.S. Department of Labor, Bureau of Labor Statistics

Arizona Office of Economic Opportunity

2021

Yavapai County(Prescott MSA)

	JAN	FEB	MAR	APR	MAY	JUN	JUL	AUG	SEP	OCT	NOV	DEC	AVG
Total Nonfarm	64,600	65,300	65,900	66,300	66,700	66,100							
Total Private	54,400	54,800	55,400	55,800	56,100	56,400							
Goods Producing	10,200	10,300	10,500	10,500	10,700	10,900							
Mining and Construction	6,500	6,600	6,800	6,900	7,000	7,200							
Manufacturing	3,700	3,700	3,700	3,600	3,700	3,700							
Service-Providing	54,400	55,000	55,400	55,800	56,000	55,200							
Private Service-Providing	44,200	44,500	44,900	45,300	45,400	45,500							
Trade, Transportation, and Utilities	13,100	13,200	13,200	13,300	13,200	13,300							
Information	500	500	500	500	500	500							
Financial Activities	2,200	2,200	2,200	2,200	2,200	2,200							
Professional and Business Services	4,800	4,900	4,900	4,900	4,900	5,000							
Educational and Health Services	12,000	12,100	12,200	12,200	12,200	12,100							
Leisure and Hospitality	9,300	9,300	9,600	9,900	10,000	10,000							
Other Services	2,300	2,300	2,300	2,300	2,400	2,400							
Government	10,200	10,500	10,500	10,500	10,600	9,700							
Federal Government	1,500	1,600	1,600	1,600	1,600	1,600							
State and Local Government	8,700	8,900	8,900	8,900	9,000	8,100							

Benchmark year 2020, quarter 1, rev. 7/9/2021

Equal Opportunity Employer/ Program available in alternative format/ reasonable accommodations: 602-771-1110, TDD 1-800-367-8939

Nonfarm Employment

Prepared in Cooperation with the U.S. Department of Labor, Bureau of Labor Statistics

Arizona Office of Economic Opportunity

2021

Yuma County(Yuma MSA)

	JAN	FEB	MAR	APR	MAY	JUN	JUL	AUG	SEP	OCT	NOV	DEC	AVG
Total Nonfarm	56,100	56,800	56,800	56,600	56,100	55,100							
Total Private	42,100	42,300	42,300	42,000	41,500	41,200							

Goods Producing	6,700	7,000	6,900	6,600	6,500	6,600
Mining and Construction	3,500	3,700	3,600	3,700	3,700	3,800
Manufacturing	3,200	3,300	3,300	2,900	2,800	2,800
Service-Providing	49,400	49,800	49,900	50,000	49,600	48,500
Private Service-Providing	35,400	35,300	35,400	35,400	35,000	34,600
Trade, Transportation, and Utilities	11,000	11,100	11,100	11,100	11,000	11,000
Information	400	300	300	300	300	300
Financial Activities	1,900	1,900	1,900	1,900	1,900	2,000
Professional and Business Services	6,800	6,800	6,700	6,600	6,500	6,600
Educational and Health Services	8,000	7,900	7,900	8,000	7,900	7,200
Leisure and Hospitality	5,500	5,500	5,700	5,700	5,700	5,800
Other Services	1,800	1,800	1,800	1,800	1,700	1,700
Government	14,000	14,500	14,500	14,600	14,600	13,900
Federal Government	3,600	3,600	3,600	3,700	3,700	3,700
State and Local Government	10,400	10,900	10,900	10,900	10,900	10,200

Benchmark year 2020, quarter 1, rev. 7/9/2021

Equal Opportunity Employer/ Program available in alternative format/ reasonable accomodations: 602-771-1110, TDD 1-800-367-8939

Nonfarm Employment

Prepared in Cooperation with the U.S. Department of Labor, Bureau of Labor Statistics

Arizona Office of Economic Opportunity

2020

Apache County

	JAN	FEB	MAR	APR	MAY	JUN	JUL	AUG	SEP	OCT	NOV	DEC	AVG
Total Nonfarm	18,250	18,225	18,100	17,000	16,875	15,975	15,800	17,075	17,250	17,150	17,000	17,025	17,125
Total Private	7,625	7,575	7,400	6,750	6,750	6,875	6,900	7,050	7,075	7,075	6,950	6,925	7,075
Goods Producing	650	650	625	550	425	525	550	575	600	625	625	600	575
Service-Providing	17,600	17,575	17,475	16,450	16,450	15,450	15,250	16,500	16,650	16,525	16,375	16,425	16,550
Private Service-Providing	6,975	6,925	6,775	6,200	6,325	6,350	6,350	6,475	6,475	6,450	6,325	6,325	6,500
Trade, Transportation, and Utilities	1,975	1,950	1,975	1,850	1,875	1,900	1,900	1,925	1,950	1,900	1,900	1,900	1,925
Other Private Service-Providing	5,000	4,975	4,800	4,350	4,450	4,450	4,450	4,550	4,525	4,550	4,425	4,425	4,575
Government	10,625	10,650	10,700	10,250	10,125	9,100	8,900	10,025	10,175	10,075	10,050	10,100	10,050
Federal Government	2,525	2,575	2,650	2,675	2,700	2,725	2,550	2,725	2,825	2,750	2,725	2,725	2,675
State and Local Government	8,100	8,075	8,050	7,575	7,425	6,375	6,350	7,300	7,350	7,325	7,325	7,375	7,375

Benchmark year 2020, quarter 1, rev. 5/8/2021

Equal Opportunity Employer/ Program available in alternative format/ reasonable accommodations: 602-771-1110, TDD 1-800-367-8939

Nonfarm Employment

Prepared in Cooperation with the U.S. Department of Labor, Bureau of Labor Statistics

Arizona Office of Economic Opportunity

2020

Cochise County(Sierra-Vista Douglas MSA)

	JAN	FEB	MAR	APR	MAY	JUN	JUL	AUG	SEP	OCT	NOV	DEC	AVG
Total Nonfarm	34,700	35,000	35,000	32,800	33,500	33,600	33,700	34,500	34,900	35,100	35,200	35,100	34,400
Total Private	23,900	24,000	24,100	22,000	22,700	23,300	23,500	23,700	24,000	24,200	24,300	24,300	23,700
Goods Producing	3,000	3,100	3,200	3,200	3,400	3,600	3,800	3,900	3,900	4,000	4,000	4,000	3,600
Mining and Construction	2,400	2,500	2,600	2,600	2,800	3,000	3,100	3,200	3,200	3,300	3,400	3,400	3,000
Manufacturing	600	600	600	600	600	600	700	700	700	700	600	600	600
Service-Providing	31,700	31,900	31,800	29,600	30,100	30,000	29,900	30,600	31,000	31,100	31,200	31,100	30,800
Private Service-Providing	20,900	20,900	20,900	18,800	19,300	19,700	19,700	19,800	20,100	20,200	20,300	20,300	20,100
Trade, Transportation, and Utilities	6,200	6,200	6,200	5,800	6,000	6,100	6,200	6,200	6,300	6,400	6,600	6,700	6,200
Information	400	400	300	300	300	400	400	300	300	300	300	300	300
Financial Activities	800	800	800	800	800	800	800	800	800	800	800	800	800
Professional and Business Services	4,600	4,500	4,600	4,500	4,400	4,300	4,500	4,400	4,500	4,600	4,500	4,500	4,500

Educational and Health Services	4,600	4,700	4,700	4,300	4,300	4,300	4,200	4,400	4,400	4,400	4,400	4,300	4,400
Leisure and Hospitality	3,600	3,600	3,600	2,500	2,800	3,100	2,900	3,000	3,100	3,000	3,000	3,000	3,100
Other Services	700	700	700	600	700	700	700	700	700	700	700	700	700
Government	10,800	11,000	10,900	10,800	10,800	10,300	10,200	10,800	10,900	10,900	10,900	10,800	10,800
Federal Government	4,800	4,800	4,800	4,900	4,900	4,900	4,900	5,000	5,000	4,900	4,800	4,800	4,900
State and Local Government	6,000	6,200	6,100	5,900	5,900	5,400	5,300	5,800	5,900	6,000	6,100	6,000	5,900

Benchmark year 2020, quarter 1, rev. 5/8/2021

Equal Opportunity Employer/ Program available in alternative format/ reasonable accommodations: 602-771-1110, TDD 1-800-367-8939

Nonfarm Employment

Prepared in Cooperation with the U.S. Department of Labor, Bureau of Labor Statistics

Arizona Office of Economic Opportunity

2020

Coconino County(Flagstaff MSA)

	JAN	FEB	MAR	APR	MAY	JUN	JUL	AUG	SEP	OCT	NOV	DEC	AVG
Total Nonfarm	67,300	67,400	67,400	56,600	58,000	60,500	60,300	62,500	63,300	64,100	63,900	63,000	62,900
Total Private	47,300	47,100	47,300	36,800	39,500	42,100	42,700	43,300	43,800	44,800	45,000	44,700	43,700
Goods Producing	6,400	6,400	6,400	6,200	6,400	6,600	6,400	6,500	6,500	6,600	6,500	6,600	6,500
Mining and Construction	2,500	2,500	2,500	2,400	2,600	2,700	2,600	2,700	2,700	2,800	2,700	2,700	2,600
Manufacturing	3,900	3,900	3,900	3,800	3,800	3,900	3,800	3,800	3,800	3,800	3,800	3,900	3,800
Service-Providing	60,900	61,000	61,000	50,400	51,600	53,900	53,900	56,000	56,800	57,500	57,400	56,400	56,400
Private Service-Providing	40,900	40,700	40,900	30,600	33,100	35,500	36,300	36,800	37,300	38,200	38,500	38,100	37,200
Trade, Transportation, and Utilities	9,100	9,000	9,000	7,700	7,900	8,400	8,700	8,800	9,000	8,900	9,200	9,100	8,700
Information	400	400	500	300	300	300	300	300	400	400	400	400	400
Financial Activities	1,500	1,500	1,500	1,400	1,400	1,400	1,500	1,500	1,400	1,400	1,500	1,500	1,500
Professional and Business Services	3,300	3,300	3,400	2,900	3,100	3,100	3,200	3,100	3,000	3,000	2,900	2,900	3,100
Educational and Health Services	9,700	9,700	9,700	8,900	9,100	9,000	8,900	8,900	9,000	9,100	9,200	9,100	9,200
Leisure and Hospitality	15,100	15,000	15,100	7,900	9,800	11,600	12,000	12,500	12,800	13,600	13,600	13,400	12,700
Other Services	1,800	1,800	1,700	1,500	1,500	1,700	1,700	1,700	1,700	1,800	1,700	1,700	1,700
Government	20,000	20,300	20,100	19,800	18,500	18,400	17,600	19,200	19,500	19,300	18,900	18,300	19,200
Federal Government	2,500	2,500	2,500	2,700	2,700	2,900	2,600	2,800	3,000	2,800	2,600	2,500	2,700
State and Local Government	17,500	17,800	17,600	17,100	15,800	15,500	15,000	16,400	16,500	16,500	16,300	15,800	16,500

Benchmark year 2020, quarter 1, rev. 5/8/2021

Equal Opportunity Employer/ Program available in alternative format/ reasonable accommodations: 602-771-1110, TDD 1-800-367-8939

Nonfarm Employment

Prepared in Cooperation with the U.S. Department of Labor, Bureau of Labor Statistics

Arizona Office of Economic Opportunity

2020
Gila County

	JAN	FEB	MAR	APR	MAY	JUN	JUL	AUG	SEP	OCT	NOV	DEC	AVG
Total Nonfarm	14,475	14,450	14,300	13,700	14,200	14,100	13,850	14,450	14,375	14,300	14,225	14,200	14,225
Total Private	9,025	8,975	8,950	8,325	8,925	9,125	9,025	9,225	9,150	9,175	9,050	9,050	9,000
Goods Producing	2,600	2,500	2,525	2,550	2,675	2,600	2,700	2,775	2,750	2,775	2,700	2,725	2,650
Service-Providing	11,875	11,950	11,775	11,150	11,525	11,500	11,150	11,675	11,625	11,525	11,525	11,475	11,575
Private Service-Providing	6,425	6,475	6,425	5,775	6,250	6,525	6,325	6,450	6,400	6,400	6,350	6,325	6,350
Trade, Transportation, and Utilities	2,150	2,125	2,175	2,150	2,250	2,325	2,250	2,300	2,275	2,300	2,300	2,325	2,250
Other Private Service-Providing	4,275	4,350	4,250	3,625	4,000	4,200	4,075	4,150	4,125	4,100	4,050	4,000	4,100
Government	5,450	5,475	5,350	5,375	5,275	4,975	4,825	5,225	5,225	5,125	5,175	5,150	5,225
Federal Government	250	250	275	350	325	325	300	350	350	275	275	250	300
State and Local Government	5,200	5,225	5,075	5,025	4,950	4,650	4,525	4,875	4,875	4,850	4,900	4,900	4,925

Benchmark year 2020, quarter 1, rev. 5/8/2021

Equal Opportunity Employer/ Program available in alternative format/ reasonable accommodations: 602-771-1110, TDD 1-800-367-8939

Nonfarm Employment

Prepared in Cooperation with the U.S. Department of Labor, Bureau of Labor Statistics

Arizona Office of Economic Opportunity

2020
Graham County

	JAN	FEB	MAR	APR	MAY	JUN	JUL	AUG	SEP	OCT	NOV	DEC	AVG
Total Nonfarm	9,450	9,725	9,725	9,150	9,250	9,025	8,650	9,275	9,675	9,750	9,800	9,850	9,425
Total Private	6,675	6,700	6,675	6,250	6,475	6,625	6,625	6,650	6,675	6,750	6,800	6,875	6,650
Goods Producing	1,925	1,950	1,950	1,875	1,850	1,875	1,875	1,875	1,850	1,900	1,900	1,950	1,900
Service-Providing	7,525	7,775	7,775	7,275	7,400	7,150	6,775	7,400	7,825	7,850	7,900	7,900	7,525
Private Service-Providing	4,750	4,750	4,725	4,375	4,625	4,750	4,750	4,775	4,825	4,850	4,900	4,925	4,750
Trade, Transportation, and Utilities	1,825	1,800	1,825	1,825	1,875	1,900	1,900	1,950	1,925	1,950	2,000	2,000	1,900
Other Private Service-Providing	2,925	2,950	2,900	2,550	2,750	2,850	2,850	2,825	2,900	2,900	2,900	2,925	2,850
Government	2,775	3,025	3,050	2,900	2,775	2,400	2,025	2,625	3,000	3,000	3,000	2,975	2,775
Federal Government	400	375	400	400	400	425	425	425	425	425	400	425	400
State and Local Government	2,375	2,650	2,650	2,500	2,375	1,975	1,600	2,200	2,575	2,575	2,600	2,550	2,375

Benchmark year 2020, quarter 1, rev. 5/8/2021

Equal Opportunity Employer/ Program available in alternative format/ reasonable accommodations: 602-771-1110, TDD 1-800-367-8939

Nonfarm Employment

Prepared in Cooperation with the U.S. Department of Labor, Bureau of Labor Statistics
 Arizona Office of Economic Opportunity

2020
 Greenlee County

	JAN	FEB	MAR	APR	MAY	JUN	JUL	AUG	SEP	OCT	NOV	DEC	AVG
Total Nonfarm	5,200	5,225	5,275	5,150	5,075	4,900	4,725	4,850	4,875	4,950	4,900	4,825	5,000
Total Private	4,650	4,650	4,700	4,600	4,550	4,425	4,375	4,325	4,300	4,350	4,325	4,250	4,450
Goods Producing	3,750	3,750	3,825	3,800	3,725	3,625	3,550	3,525	3,500	3,550	3,500	3,425	3,625
Service-Providing	1,450	1,475	1,450	1,350	1,350	1,275	1,175	1,325	1,375	1,400	1,400	1,400	1,375
Private Service-Providing	900	900	875	800	825	800	825	800	800	800	825	825	825
Trade, Transportation, and Utilities	500	500	525	500	500	475	500	475	475	475	475	500	500
Other Private Service-Providing	400	400	350	300	325	325	325	325	325	325	350	325	325
Government	550	575	575	550	525	475	350	525	575	600	575	575	550
Federal Government	25	25	25	25	25	25	25	50	50	50	50	50	50
State and Local Government	525	550	550	525	500	450	325	475	525	550	525	525	500

Benchmark year 2020, quarter 1, rev. 5/8/2021

Equal Opportunity Employer/ Program available in alternative format/ reasonable accommodations: 602-771-1110, TDD 1-800-367-8939

Nonfarm Employment

Prepared in Cooperation with the U.S. Department of Labor, Bureau of Labor Statistics
 Arizona Office of Economic Opportunity

2020
 La Paz County

	JAN	FEB	MAR	APR	MAY	JUN	JUL	AUG	SEP	OCT	NOV	DEC	AVG
Total Nonfarm	5,675	5,725	5,775	5,225	5,375	5,225	5,050	5,100	5,175	5,200	5,200	5,225	5,325
Total Private	3,325	3,400	3,450	2,975	3,125	3,175	3,125	3,150	3,175	3,200	3,175	3,200	3,200
Goods Producing	200	175	200	225	200	200	175	200	200	200	200	200	200
Service-Providing	5,475	5,550	5,575	5,000	5,175	5,025	4,875	4,900	4,975	5,000	5,000	5,025	5,125
Private Service-Providing	3,125	3,225	3,250	2,750	2,925	2,975	2,950	2,950	2,975	3,000	2,975	3,000	3,000
Trade, Transportation, and Utilities	1,625	1,625	1,650	1,575	1,600	1,600	1,600	1,625	1,625	1,650	1,650	1,675	1,625
Other Private Service-Providing	1,500	1,600	1,600	1,175	1,325	1,375	1,350	1,325	1,350	1,350	1,325	1,325	1,375
Government	2,350	2,325	2,325	2,250	2,250	2,050	1,925	1,950	2,000	2,000	2,025	2,025	2,125
Federal Government	350	350	375	375	375	375	350	375	375	375	375	375	375
State and Local Government	2,000	1,975	1,950	1,875	1,875	1,675	1,575	1,575	1,625	1,625	1,650	1,650	1,750

Benchmark year 2020, quarter 1, rev. 5/8/2021

Equal Opportunity Employer/ Program available in alternative format/ reasonable accommodations: 602-771-1110, TDD 1-800-367-8939

Nonfarm Employment

Prepared in Cooperation with the U.S. Department of Labor, Bureau of Labor Statistics

Arizona Office of Economic Opportunity

2020

Maricopa County

	JAN	FEB	MAR	APR	MAY	JUN	JUL	AUG	SEP	OCT	NOV	DEC	AVG
Total Nonfarm	2,152,400	2,165,700	2,141,800	1,919,300	1,966,700	1,961,000	1,940,400	2,010,800	2,031,900	2,064,800	2,087,700	2,094,100	2,044,700
Total Private	1,924,400	1,930,700	1,909,300	1,690,100	1,743,100	1,781,300	1,767,100	1,791,100	1,806,600	1,839,500	1,862,000	1,870,700	1,826,300
Goods Producing	267,400	269,300	268,500	260,400	261,600	263,000	260,800	261,800	261,600	263,000	266,200	263,100	263,900
Mining and Construction	135,800	137,300	136,500	133,500	134,100	134,600	133,200	133,400	133,400	135,100	137,100	133,100	134,800
Manufacturing	131,600	132,000	132,000	126,900	127,500	128,400	127,600	128,400	128,200	127,900	129,100	130,000	129,100
Service-Providing	1,885,000	1,896,400	1,873,300	1,658,900	1,705,100	1,698,000	1,679,600	1,749,000	1,770,300	1,801,800	1,821,500	1,831,000	1,780,800
Private Service-Providing	1,657,000	1,661,400	1,640,800	1,429,700	1,481,500	1,518,300	1,506,300	1,529,300	1,545,000	1,576,500	1,595,800	1,607,600	1,562,400
Trade, Transportation, and Utilities	406,900	404,300	403,600	368,300	377,000	390,900	392,400	399,700	403,100	409,000	422,800	427,500	400,500
Information	40,600	40,500	40,100	36,100	35,700	35,300	35,700	36,000	36,700	36,600	36,100	36,300	37,100
Financial Activities	203,500	204,400	203,900	200,400	200,700	201,300	202,100	202,400	202,700	204,700	204,500	204,400	202,900
Professional and Business Services	365,500	365,800	362,600	336,100	343,100	343,500	338,400	344,400	343,300	353,600	356,400	358,500	350,900
Educational and Health Services	343,900	344,400	342,300	308,900	316,400	317,500	318,200	325,700	329,300	334,300	334,900	337,800	329,500
Leisure and Hospitality	229,900	234,900	230,400	136,700	160,100	178,500	166,100	167,000	175,300	183,900	186,400	187,900	186,400
Other Services	66,700	67,100	57,900	43,200	48,500	51,300	53,400	54,100	54,600	54,400	54,700	55,200	55,100
Government	228,000	235,000	232,500	229,200	223,600	179,700	173,300	219,700	225,300	225,300	225,700	223,400	218,400
Federal Government	22,400	22,500	22,700	22,800	22,800	22,800	23,200	25,500	25,200	23,500	22,300	22,300	23,200
State and Local Government	205,600	212,500	209,800	206,400	200,800	156,900	150,100	194,200	200,100	201,800	203,400	201,100	195,200

Benchmark year 2020, quarter 1, rev. 5/8/2021

Equal Opportunity Employer/ Program available in alternative format/ reasonable accommodations: 602-771-1110, TDD 1-800-367-8939

Nonfarm Employment

Prepared in Cooperation with the U.S. Department of Labor, Bureau of Labor Statistics

Arizona Office of Economic Opportunity

2020

Mohave County(Lake Havasu City-Kingman MSA)

	JAN	FEB	MAR	APR	MAY	JUN	JUL	AUG	SEP	OCT	NOV	DEC	AVG
Total Nonfarm	52,500	52,800	52,400	47,100	49,600	50,200	50,200	51,000	51,500	52,300	52,400	52,100	51,200
Total Private	44,300	44,300	44,300	38,900	41,600	42,600	42,700	42,900	43,300	44,300	44,300	44,200	43,100
Goods Producing	6,700	6,600	6,700	6,400	6,500	6,600	6,700	6,800	6,700	6,900	6,900	7,000	6,700

Mining and Construction	3,600	3,500	3,500	3,400	3,500	3,600	3,800	3,800	3,800	3,900	3,900	4,000	3,700
Manufacturing	3,100	3,100	3,200	3,000	3,000	3,000	2,900	3,000	2,900	3,000	3,000	3,000	3,000
Service-Providing	45,800	46,200	45,700	40,700	43,100	43,600	43,500	44,200	44,800	45,400	45,500	45,100	44,500
Private Service-Providing	37,600	37,700	37,600	32,500	35,100	36,000	36,000	36,100	36,600	37,400	37,400	37,200	36,400
Trade, Transportation, and Utilities	12,700	12,700	12,700	11,800	12,200	12,600	12,700	12,800	12,800	13,100	13,200	13,200	12,700
Information	500	500	500	400	400	400	500	400	500	500	500	500	500
Financial Activities	1,800	1,900	1,900	1,800	1,900	1,900	1,900	1,900	1,900	1,900	1,900	2,000	1,900
Professional and Business Services	4,300	4,200	4,200	3,600	3,800	4,000	3,700	3,700	3,700	3,700	3,700	3,600	3,900
Educational and Health Services	9,200	9,200	9,100	8,400	8,800	8,600	8,600	8,900	9,000	9,000	9,000	8,900	8,900
Leisure and Hospitality	7,200	7,300	7,300	4,900	6,300	6,700	6,800	6,600	6,900	7,300	7,200	7,200	6,800
Other Services	1,900	1,900	1,900	1,600	1,700	1,800	1,800	1,800	1,800	1,900	1,900	1,800	1,800
Government	8,200	8,500	8,100	8,200	8,000	7,600	7,500	8,100	8,200	8,000	8,100	7,900	8,000
Federal Government	500	500	500	500	500	500	500	800	700	500	500	500	500
State and Local Government	7,700	8,000	7,600	7,700	7,500	7,100	7,000	7,300	7,500	7,500	7,600	7,400	7,500

Benchmark year 2020, quarter 1, rev. 5/8/2021

Equal Opportunity Employer/ Program available in alternative format/ reasonable accomodations: 602-771-1110, TDD 1-800-367-8939

Nonfarm Employment

Prepared in Cooperation with the U.S. Department of Labor, Bureau of Labor Statistics

Arizona Office of Economic Opportunity

2020

Navajo County

	JAN	FEB	MAR	APR	MAY	JUN	JUL	AUG	SEP	OCT	NOV	DEC	AVG
Total Nonfarm	26,350	26,425	26,300	24,600	25,475	24,825	24,725	26,375	26,725	26,525	26,150	25,950	25,875
Total Private	16,700	16,700	16,475	15,225	16,125	16,550	16,925	17,100	17,050	16,875	16,500	16,350	16,550
Goods Producing	1,525	1,500	1,450	1,475	1,575	1,600	1,600	1,600	1,625	1,600	1,550	1,525	1,550
Mining and Construction	1,225	1,225	1,175	1,175	1,275	1,300	1,300	1,275	1,300	1,275	1,225	1,200	1,250
Manufacturing	300	275	275	300	300	300	300	325	325	325	325	325	300
Service-Providing	24,825	24,925	24,850	23,125	23,900	23,225	23,125	24,775	25,100	24,925	24,600	24,425	24,325
Private Service-Providing	15,175	15,200	15,025	13,750	14,550	14,950	15,325	15,500	15,425	15,275	14,950	14,825	15,000
Trade, Transportation, and Utilities	4,475	4,400	4,475	4,450	4,650	4,850	5,025	5,050	4,975	4,900	4,925	4,900	4,750
Information	275	250	250	250	225	225	225	200	225	200	200	200	225
Financial Activities	575	575	550	500	500	500	550	550	550	575	575	575	550
Professional and Business Services	1,225	1,225	1,225	1,175	1,225	1,250	1,275	1,275	1,275	1,275	1,250	1,225	1,250
Educational and Health Services	4,575	4,625	4,575	4,400	4,375	4,175	4,300	4,500	4,450	4,475	4,500	4,500	4,450
Leisure and Hospitality	3,500	3,600	3,500	2,575	3,150	3,500	3,475	3,450	3,475	3,400	3,050	2,975	3,300
Other Services	550	525	450	400	425	450	475	475	475	450	450	450	475
Government	9,650	9,725	9,825	9,375	9,350	8,275	7,800	9,275	9,675	9,650	9,650	9,600	9,325

Federal Government	1,800	1,825	1,900	1,975	2,025	2,075	1,925	2,025	2,150	2,075	2,050	2,050	2,000
State and Local Government	7,850	7,900	7,925	7,400	7,325	6,200	5,875	7,250	7,525	7,575	7,600	7,550	7,325

Benchmark year 2020, quarter 1, rev. 5/8/2021

Equal Opportunity Employer/ Program available in alternative format/ reasonable accommodations: 602-771-1110, TDD 1-800-367-8939

Nonfarm Employment

Prepared in Cooperation with the U.S. Department of Labor, Bureau of Labor Statistics

Arizona Office of Economic Opportunity

2020

Pima County(Tucson MSA)

	JAN	FEB	MAR	APR	MAY	JUN	JUL	AUG	SEP	OCT	NOV	DEC	AVG
Total Nonfarm	391,500	397,500	394,400	353,200	361,700	359,600	354,000	365,100	369,100	373,500	378,400	378,600	373,100
Total Private	314,000	316,000	313,500	274,400	284,000	292,300	286,600	290,200	293,000	298,000	302,800	303,500	297,400
Goods Producing	47,700	47,700	47,500	46,000	46,800	47,200	46,700	47,000	46,800	47,400	47,300	47,500	47,100
Mining and Construction	20,000	20,000	19,900	19,100	19,700	19,800	19,500	19,700	19,700	20,200	20,300	20,400	19,900
Manufacturing	27,700	27,700	27,600	26,900	27,100	27,400	27,200	27,300	27,100	27,200	27,000	27,100	27,300
Service-Providing	343,800	349,800	346,900	307,200	314,900	312,400	307,300	318,100	322,300	326,100	331,100	331,100	325,900
Private Service-Providing	266,300	268,300	266,000	228,400	237,200	245,100	239,900	243,200	246,200	250,600	255,500	256,000	250,200
Trade, Transportation, and Utilities	63,800	63,200	63,100	57,900	59,600	62,200	62,700	63,800	64,900	66,800	69,500	70,100	64,000
Information	5,800	6,100	5,700	4,900	5,200	4,800	4,700	4,700	4,900	4,900	5,000	5,000	5,100
Financial Activities	17,500	17,600	17,600	17,200	17,200	17,400	17,500	17,400	17,300	17,200	17,800	17,700	17,500
Professional and Business Services	50,800	51,100	50,700	46,800	47,200	47,700	46,000	46,500	46,500	47,100	46,200	46,300	47,700
Educational and Health Services	69,700	70,500	70,200	64,300	65,200	66,000	65,100	66,200	66,500	67,400	68,300	68,800	67,400
Leisure and Hospitality	44,600	45,600	44,500	26,500	30,800	34,400	31,500	32,000	33,500	34,500	35,900	35,300	35,800
Other Services	14,100	14,200	14,200	10,800	12,000	12,600	12,400	12,600	12,600	12,700	12,800	12,800	12,800
Government	77,500	81,500	80,900	78,800	77,700	67,300	67,400	74,900	76,100	75,500	75,600	75,100	75,700
Federal Government	13,000	13,000	13,100	13,000	13,000	13,100	13,100	13,600	13,600	13,300	13,000	13,100	13,200
State and Local Government	64,500	68,500	67,800	65,800	64,700	54,200	54,300	61,300	62,500	62,200	62,600	62,000	62,500

Benchmark year 2020, quarter 1, rev. 5/8/2021

Equal Opportunity Employer/ Program available in alternative format/ reasonable accommodations: 602-771-1110, TDD 1-800-367-8939

Nonfarm Employment

Prepared in Cooperation with the U.S. Department of Labor, Bureau of Labor Statistics

Arizona Office of Economic Opportunity

2020

Pinal County

	JAN	FEB	MAR	APR	MAY	JUN	JUL	AUG	SEP	OCT	NOV	DEC	AVG
Total Nonfarm	63,725	64,475	64,150	59,500	60,550	58,275	56,675	60,650	61,000	61,425	62,225	62,325	61,225
Total Private	43,825	44,300	44,100	39,650	40,900	41,050	40,400	41,500	41,625	42,100	42,850	43,000	42,075
Goods Producing	7,425	7,275	7,300	7,200	7,375	7,150	6,750	7,100	7,200	7,225	7,175	7,175	7,200
Mining and Construction	3,425	3,300	3,325	3,300	3,425	3,325	3,275	3,300	3,325	3,350	3,275	3,275	3,325
Manufacturing	4,000	3,975	3,975	3,900	3,950	3,825	3,475	3,800	3,875	3,875	3,900	3,900	3,875
Service-Providing	56,300	57,200	56,850	52,300	53,175	51,125	49,925	53,550	53,800	54,200	55,050	55,150	54,025
Private Service-Providing	36,400	37,025	36,800	32,450	33,525	33,900	33,650	34,400	34,425	34,875	35,675	35,825	34,875
Trade, Transportation, and Utilities	11,925	12,000	12,100	11,600	12,000	12,325	12,400	12,725	12,575	12,800	13,200	13,275	12,400
Information	600	575	575	500	500	425	375	375	425	400	425	425	475
Financial Activities	1,525	1,550	1,550	1,425	1,450	1,425	1,425	1,400	1,425	1,450	1,475	1,475	1,450
Professional and Business Services	6,825	6,800	6,700	6,500	6,450	6,400	6,375	6,325	6,325	6,400	6,400	6,350	6,475
Educational and Health Services	6,900	6,950	6,900	6,400	6,500	6,175	6,000	6,475	6,550	6,525	6,650	6,675	6,550
Leisure and Hospitality	6,900	7,400	7,450	4,725	5,275	5,725	5,700	5,725	5,750	5,900	6,125	6,200	6,075
Other Services	1,725	1,750	1,525	1,300	1,350	1,425	1,375	1,375	1,375	1,400	1,400	1,425	1,450
Government	19,900	20,175	20,050	19,850	19,650	17,225	16,275	19,150	19,375	19,325	19,375	19,325	19,150
Federal Government	1,450	1,425	1,450	1,475	1,475	1,475	1,500	1,625	1,700	1,675	1,650	1,650	1,550
State and Local Government	18,450	18,750	18,600	18,375	18,175	15,750	14,775	17,525	17,675	17,650	17,725	17,675	17,600

Benchmark year 2020, quarter 1, rev. 5/8/2021

Equal Opportunity Employer/ Program available in alternative format/ reasonable accommodations: 602-771-1110, TDD 1-800-367-8939

Nonfarm Employment

Prepared in Cooperation with the U.S. Department of Labor, Bureau of Labor Statistics

Arizona Office of Economic Opportunity

2020

Santa Cruz County

	JAN	FEB	MAR	APR	MAY	JUN	JUL	AUG	SEP	OCT	NOV	DEC	AVG
Total Nonfarm	13,675	13,725	13,600	12,125	12,650	12,275	11,350	11,875	11,925	12,250	12,700	12,900	12,600
Total Private	9,875	9,900	9,800	8,350	8,825	8,975	8,175	8,050	8,075	8,350	8,800	9,000	8,850
Goods Producing	600	575	575	525	625	650	650	625	575	575	575	575	600
Service-Providing	13,075	13,150	13,025	11,600	12,025	11,625	10,700	11,250	11,350	11,675	12,125	12,325	12,000
Private Service-Providing	9,275	9,325	9,225	7,825	8,200	8,325	7,525	7,425	7,500	7,775	8,225	8,425	8,250
Trade, Transportation, and Utilities	5,950	5,975	5,950	5,450	5,500	5,600	4,950	4,775	4,775	4,975	5,375	5,550	5,400
Other Private Service-Providing	3,325	3,350	3,275	2,375	2,700	2,725	2,575	2,650	2,725	2,800	2,850	2,875	2,850
Government	3,800	3,825	3,800	3,775	3,825	3,300	3,175	3,825	3,850	3,900	3,900	3,900	3,750
Federal Government	1,750	1,750	1,750	1,775	1,800	1,800	1,825	1,850	1,875	1,875	1,875	1,875	1,825
State and Local Government	2,050	2,075	2,050	2,000	2,025	1,500	1,350	1,975	1,975	2,025	2,025	2,025	1,925

Benchmark year 2020, quarter 1, rev. 5/8/2021

Equal Opportunity Employer/ Program available in alternative format/ reasonable accommodations: 602-771-1110, TDD 1-800-367-8939

Nonfarm Employment

Prepared in Cooperation with the U.S. Department of Labor, Bureau of Labor Statistics

Arizona Office of Economic Opportunity

2020

Yavapai County(Prescott MSA)

	JAN	FEB	MAR	APR	MAY	JUN	JUL	AUG	SEP	OCT	NOV	DEC	AVG
Total Nonfarm	66,100	66,400	66,200	58,000	61,000	62,200	61,800	63,400	64,000	64,800	64,900	64,500	63,600
Total Private	55,100	55,300	55,200	47,100	50,200	52,300	52,000	52,600	53,100	54,100	54,200	54,300	53,000
Goods Producing	10,000	10,100	10,100	9,700	10,000	10,100	10,100	10,100	10,000	10,100	10,100	10,100	10,000
Mining and Construction	6,400	6,400	6,400	6,300	6,500	6,500	6,500	6,500	6,400	6,500	6,500	6,400	6,400
Manufacturing	3,600	3,700	3,700	3,400	3,500	3,600	3,600	3,600	3,600	3,600	3,600	3,700	3,600
Service-Providing	56,100	56,300	56,100	48,300	51,000	52,100	51,700	53,300	54,000	54,700	54,800	54,400	53,600
Private Service-Providing	45,100	45,200	45,100	37,400	40,200	42,200	41,900	42,500	43,100	44,000	44,100	44,200	42,900
Trade, Transportation, and Utilities	12,700	12,700	12,700	11,400	12,000	12,500	12,500	12,700	12,600	12,900	13,100	13,300	12,600
Information	500	500	500	400	400	400	400	400	500	500	500	500	500
Financial Activities	2,200	2,200	2,300	2,200	2,200	2,200	2,200	2,200	2,200	2,200	2,200	2,200	2,200
Professional and Business Services	4,600	4,600	4,600	4,400	4,500	4,600	4,500	4,500	4,600	4,700	4,700	4,800	4,600
Educational and Health Services	12,500	12,600	12,500	11,400	11,700	11,700	11,600	11,800	12,000	12,100	12,000	12,000	12,000
Leisure and Hospitality	10,200	10,300	10,200	5,700	7,200	8,500	8,400	8,600	8,900	9,300	9,300	9,100	8,800
Other Services	2,400	2,300	2,300	1,900	2,200	2,300	2,300	2,300	2,300	2,300	2,300	2,300	2,300
Government	11,000	11,100	11,000	10,900	10,800	9,900	9,800	10,800	10,900	10,700	10,700	10,200	10,700
Federal Government	1,500	1,500	1,600	1,700	1,700	1,700	1,600	1,900	1,900	1,700	1,600	1,600	1,700
State and Local Government	9,500	9,600	9,400	9,200	9,100	8,200	8,200	8,900	9,000	9,000	9,100	8,600	9,000

Benchmark year 2020, quarter 1, rev. 5/8/2021

Equal Opportunity Employer/ Program available in alternative format/ reasonable accommodations: 602-771-1110, TDD 1-800-367-8939

Nonfarm Employment

Prepared in Cooperation with the U.S. Department of Labor, Bureau of Labor Statistics

Arizona Office of Economic Opportunity

2020

Yuma County(Yuma MSA)

	JAN	FEB	MAR	APR	MAY	JUN	JUL	AUG	SEP	OCT	NOV	DEC	AVG
Total Nonfarm	60,100	60,600	59,900	53,400	53,700	52,700	52,100	53,900	54,400	55,100	55,900	56,200	55,700
Total Private	45,200	45,600	45,000	39,200	39,500	39,700	39,300	39,900	40,300	41,000	41,700	42,100	41,500

Goods Producing	6,300	6,600	6,600	6,000	5,900	5,900	5,800	5,800	5,800	6,100	6,300	6,800	6,200
Mining and Construction	3,300	3,500	3,500	3,500	3,600	3,600	3,500	3,400	3,400	3,600	3,600	3,600	3,500
Manufacturing	3,000	3,100	3,100	2,500	2,300	2,300	2,300	2,400	2,400	2,500	2,700	3,200	2,700
Service-Providing	53,800	54,000	53,300	47,400	47,800	46,800	46,300	48,100	48,600	49,000	49,600	49,400	49,500
Private Service-Providing	38,900	39,000	38,400	33,200	33,600	33,800	33,500	34,100	34,500	34,900	35,400	35,300	35,400
Trade, Transportation, and Utilities	11,900	11,900	11,800	10,900	10,900	10,900	11,000	11,200	11,200	10,900	11,400	11,300	11,300
Information	400	400	400	300	300	300	300	300	300	300	400	400	300
Financial Activities	2,200	2,200	2,100	1,900	1,900	1,900	1,900	1,900	1,900	1,900	1,900	1,900	2,000
Professional and Business Services	7,600	7,700	7,500	6,300	6,100	6,100	6,200	6,300	6,400	6,700	6,500	6,700	6,700
Educational and Health Services	8,400	8,300	8,200	7,600	7,600	7,500	7,500	7,700	7,700	7,700	7,800	7,900	7,800
Leisure and Hospitality	6,600	6,700	6,600	4,600	5,200	5,400	5,000	5,100	5,400	5,700	5,600	5,300	5,600
Other Services	1,800	1,800	1,800	1,600	1,600	1,700	1,600	1,600	1,600	1,700	1,800	1,800	1,700
Government	14,900	15,000	14,900	14,200	14,200	13,000	12,800	14,000	14,100	14,100	14,200	14,100	14,100
Federal Government	3,700	3,700	3,700	3,700	3,700	3,700	3,700	3,800	3,800	3,700	3,700	3,700	3,700
State and Local Government	11,200	11,300	11,200	10,500	10,500	9,300	9,100	10,200	10,300	10,400	10,500	10,400	10,400

Benchmark year 2020, quarter 1, rev. 5/8/2021

Equal Opportunity Employer/ Program available in alternative format/ reasonable accommodations: 602-771-1110, TDD 1-800-367-8939

About This Publication

Arizona's Workforce is published 14 times a year by the State of Arizona Office of Economic Opportunity (OEO) — 12 times as the monthly Employment Report and twice a year as a two-year Forecast Report. OEO is the state agency responsible for labor market information and demographic data for the state of Arizona.

Material published in *Arizona's Workforce* is in the public domain and can be reproduced without further permission. Appropriate citations are requested.

Next Releases:

July Employment Report, Thursday, August 19th 2021, 10:00 am

Location: ACA Conference Rooms, Camelback, 100 North 7th Avenue, Phoenix, AZ 85007

Office of Economic Opportunity

Sandra Watson	Interim Director
Doug Walls	Research Administrator

On the web: <https://laborstats.az.gov/>

Phone: 602-771-2222

To be placed on the *Arizona Workforce* email distribution list, or to send feedback or questions, contact:

labor.info@azstats.gov

— Equal Opportunity Employer/Program —

Under Titles VI and VII of the Civil Rights Act of 1964 (Title VI & VII), and the Americans with Disabilities Act of 1990 (ADA), Section 504 of the Rehabilitation Act of 1973, and the Age Discrimination Act of 1975, the Department prohibits discrimination in admissions, programs, services, activities, or employment based on race, color, religion, sex, national origin, age, and disability. The Department must make a reasonable accommodation to allow a person with a disability to take part in a program, service or activity. For example, this means if necessary, the Department must provide sign language interpreters for people who are deaf, a wheelchair accessible location, or enlarged print materials. It also means that the Department will take any other reasonable action that allows you to take part in and understand a program or activity, including making reasonable changes to an activity. If you believe that you will not be able to understand or take part in a program or activity because of your disability, please let us know of your disability needs in advance if at all possible. To request this document in alternative format or for further information about this policy, contact the Department of Economic Security, Division of Developmental Disabilities ADA Coordinator at 602 542-6825 ; TTY/TDD Services: 7-1-1.

This page left intentionally blank.