



OFFICE OF ECONOMIC OPPORTUNITY

Monthly Employment Report

March 25, 2021

Nonfarm Employment Increased by 17,100 Jobs over the Month in February 2021 Arizona Unemployment Rate Increased to 6.9%

The Arizona seasonally-adjusted unemployment rate increased to 6.9% in February 2021 from 6.7% in January 2021. The U.S. seasonally-adjusted unemployment rate decreased to 6.2% in February 2021 from 6.3% in January 2021. Over the month, Arizona's seasonally-adjusted labor force increased by 8,896 individuals. Over the year, the labor force decreased by 3,886 individuals or 0.1%.

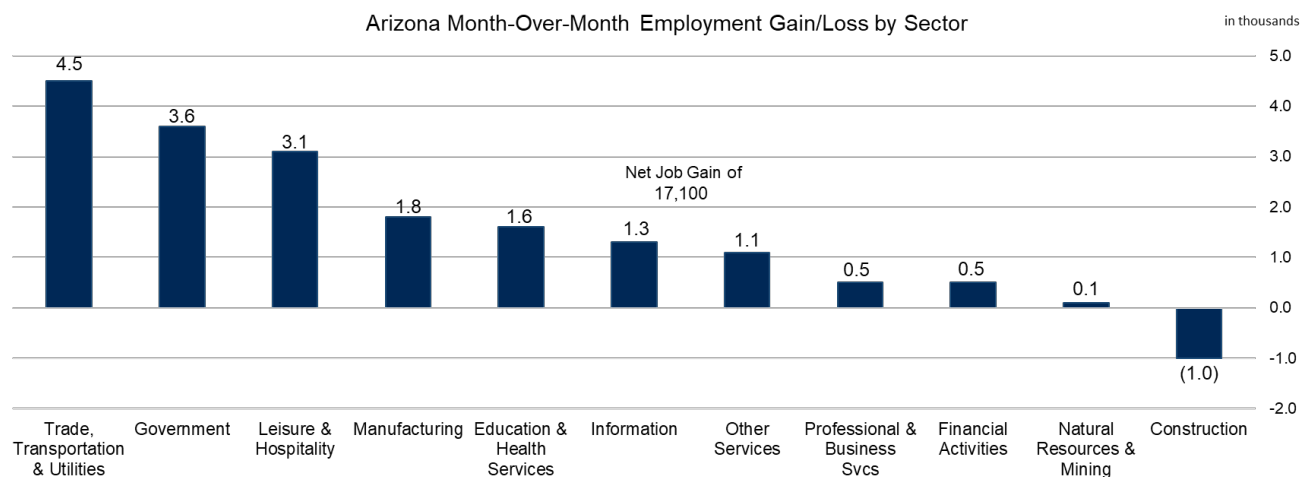
Over the Month

Arizona nonfarm employment increased by 17,100 jobs or 0.6% in February. Historically (2011-2020), nonfarm employment has averaged a gain of 25,400 jobs in February.

The government sector recorded a gain of 3,600 jobs in February. The private sector recorded a gain of 13,500 jobs in February. Historically (2011-2020), private sector employment has averaged a gain of 14,100 jobs in February.

Arizona, U.S. Economic Indicators			
<u>Unemployment Rate (Seasonally Adj.)</u>			
	<u>Feb '21</u>	<u>Jan '21</u>	<u>Feb '20</u>
Arizona	6.9%	6.7%	4.9%
United States	6.2%	6.3%	3.5%
Arizona (Unadj. Rate)	7.0%	6.9%	4.5%

<u>Arizona Nonfarm Employment (in Thousands)</u>			
	<u>Feb '21</u>	<u>Jan '21</u>	<u>Feb '20</u>
Overall	2,885.3	2,868.2	3,007.6
Over-Month % Chg.	0.6%	-1.3%	0.7%
Year-to-Year % Chg.	-4.1%	-3.9%	2.9%



Source: Produced by the Arizona Office of Economic Opportunity in cooperation with the U.S. Dept. of Labor, Bureau of Labor Statistics

Private sector employment gains were reported in the following sectors:

- Trade, Transportation and Utilities (4,500 jobs)
- Leisure and Hospitality (3,100 jobs)
- Manufacturing (1,800 jobs)
- Education and Health Services (1,600 jobs)
- Information (1,300 jobs)

- Other Services (1,100 jobs)
- Professional and Business Services (500 jobs)
- Financial Activities (500 jobs)
- Natural Resources and Mining (100 jobs)

Private sector employment losses were reported in the following sector:

- Construction (-1,000 jobs)

Over the Year

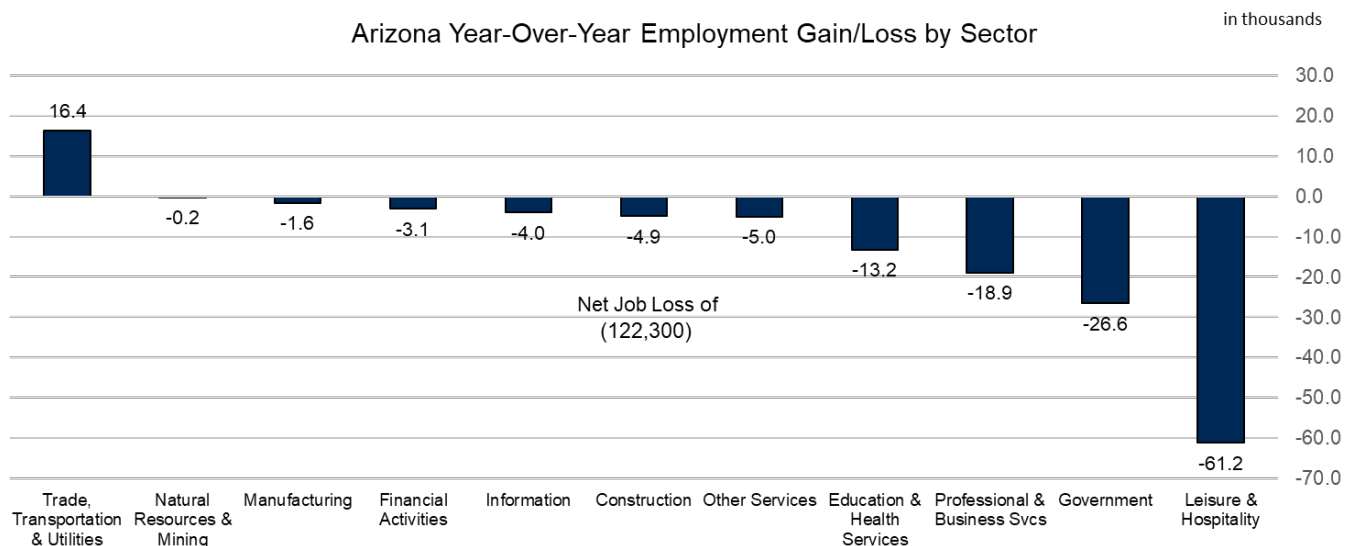
Arizona nonfarm employment decreased by 122,300 jobs or 4.1% in February. A majority of the losses were recorded in private sector employment (-95,700 jobs), while government recorded losses of 26,600 jobs in February.

Gain was reported in:

- Trade, Transportation and Utilities (16,400 jobs)

Losses were reported in:

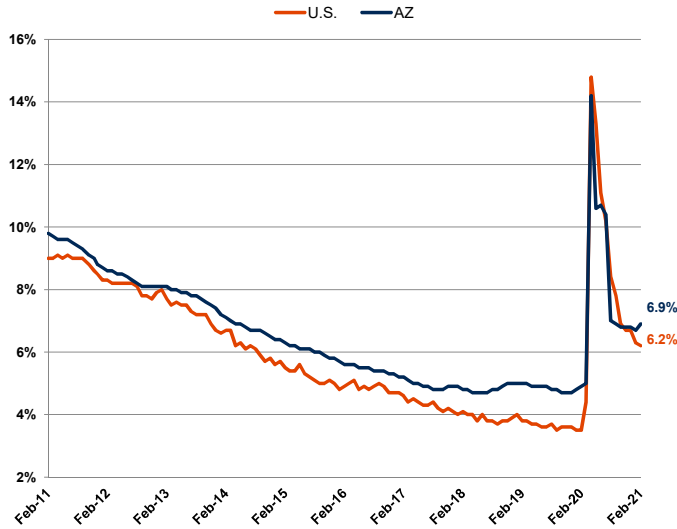
- Leisure and Hospitality (-61,200 jobs)
- Professional and Business Services (-18,900 jobs)
- Education and Health Services (-13,200 jobs)
- Other Services (-5,000 jobs)
- Construction (-4,900 jobs)
- Information (-4,000 jobs)
- Financial Activities (-3,100 jobs)
- Manufacturing (-1,600 jobs)
- Natural Resources and Mining (-200 jobs)



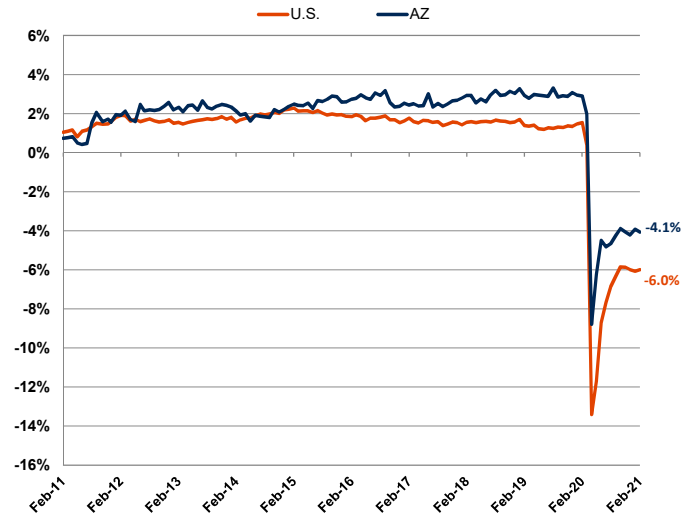
Source: Produced by the Arizona Office of Economic Opportunity in cooperation with the U.S. Dept. of Labor, Bureau of Labor Statistics

LABOR MARKET TRENDS CHARTS

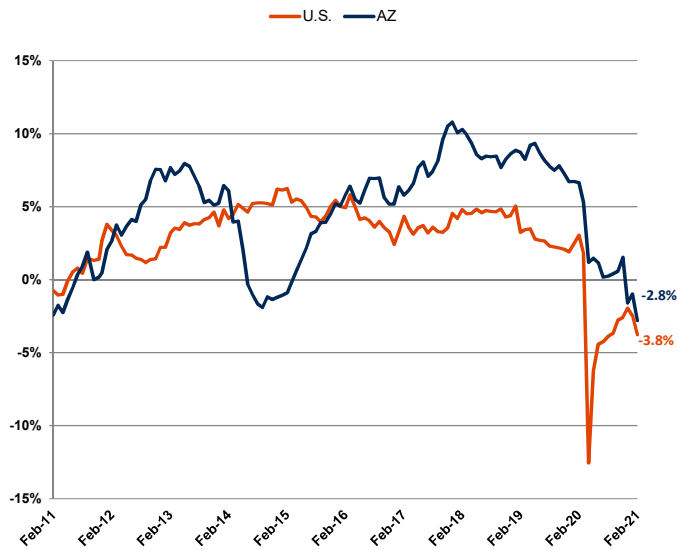
Arizona & U.S. Unemployment Rate
Seasonally Adjusted



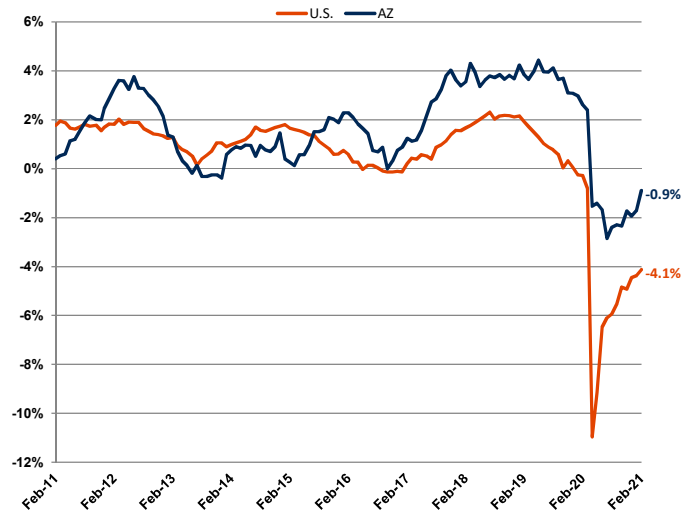
Arizona & U.S. Nonfarm Employment
Year-to-Year Percent Change



Arizona & U.S. Construction Employment
Year-to-Year Percent Change



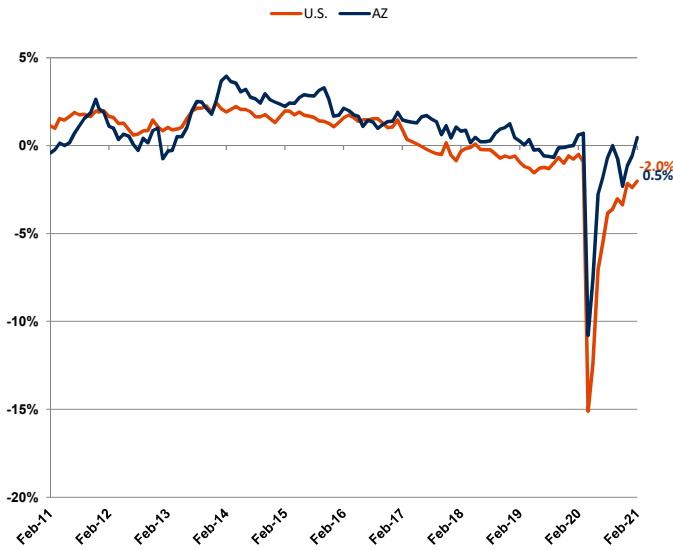
Arizona & U.S. Manufacturing Employment
Year-to-Year Percent Change



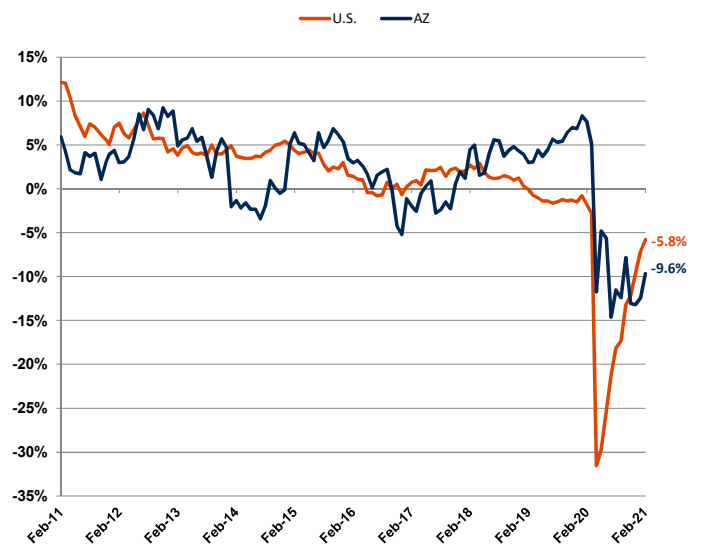
Source: Prepared by the Arizona Office of Economic Opportunity, in cooperation with the U.S. Dept. of Labor, Bureau of Labor Statistics

LABOR MARKET TRENDS CHARTS

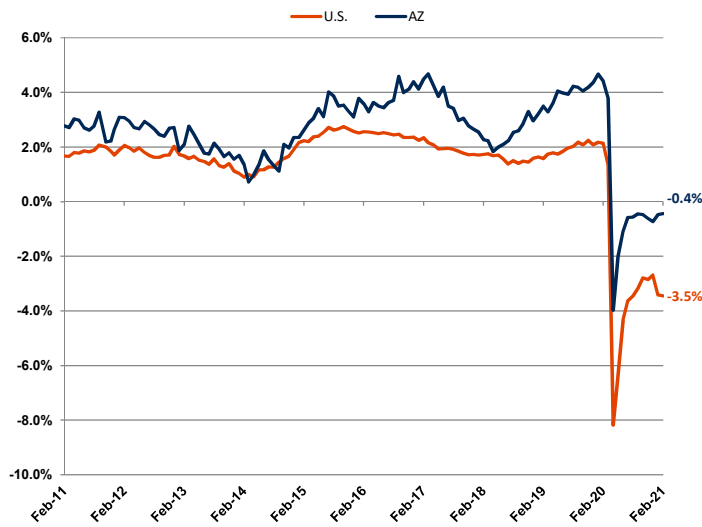
Arizona & U.S. Retail Trade
Year-to-Year Percent Change



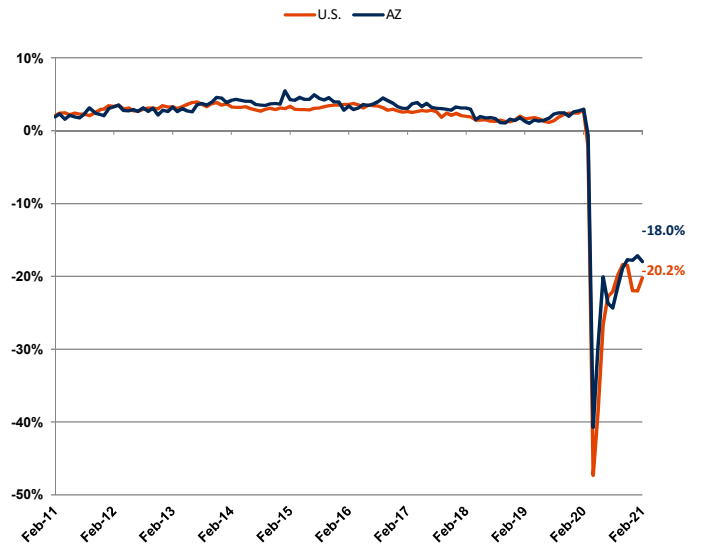
Arizona & U.S. Employment Services
Year-to-Year Percent Change



Arizona & U.S. Health Care
Year-to-Year Percent Change



Arizona & U.S. Leisure & Hospitality
Year-to-Year Percent Change



Source: Prepared by the Arizona Office of Economic Opportunity, in cooperation with the U.S. Dept. of Labor, Bureau of Labor Statistics

Table 1

Labor Force, Employment, Unemployment and Unemployment Rates^(a)

(in Thousands)

<u>ARIZONA</u>	February 2021 ^(c)	January 2021 ^(d)	February 2020 ^(d)	Monthly/Yearly Change	
				January '21 - February '21	February '20 - February '21
Civilian Labor Force ^(e)	3,587.8	3,572.9	3,597.0	14.9	-9.2
Unemployment	251.4	246.9	162.9	4.5	88.5
Unemployment Rate	7.0%	6.9%	4.5%	0.1	2.5
Unemployment Rate (Seasonally Adjusted) ^(f)	6.9%	6.7%	4.9%	0.2	2.0
Total Employment	3,336.5	3,326.0	3,434.2	10.5	-97.7

NOTE: 2021 estimates have been revised, 2020 MSA estimates have not, comparison between the two is not recommended.

FLAGSTAFF MSA (Coconino County)

Civilian Labor Force ^(e)	73.9	73.8	77.7
Unemployment	6.6	6.5	4.5
Unemployment Rate (Unadjusted)	8.9%	8.8%	5.8%
Total Employment	67.3	67.3	73.2

LAKE HAVASU CITY-KINGMAN MSA (Mohave County)

Civilian Labor Force ^(e)	87.9	87.4	89.6
Unemployment	6.8	6.7	4.9
Unemployment Rate (Unadjusted)	7.8%	7.6%	5.5%
Total Employment	81.1	80.8	84.7

PHOENIX-MESA-SCOTTSDALE MSA (Maricopa & Pinal Counties)

Civilian Labor Force ^(e)	2,547.0	2,533.2	2,565.8
Unemployment	169.6	167.1	98.8
Unemployment Rate (Unadjusted)	6.7%	6.6%	3.8%
Total Employment	2,377.5	2,366.1	2,467.0

PRESCOTT MSA (Yavapai County)

Civilian Labor Force ^(e)	108.0	107.1	108.0
Unemployment	6.5	6.4	4.6
Unemployment Rate (Unadjusted)	6.0%	6.0%	4.2%
Total Employment	101.4	100.7	103.5

SIERRA VISTA-DOUGLAS MSA (Cochise County)

Civilian Labor Force ^(e)	51.8	51.6	52.2
Unemployment	3.3	3.0	2.8
Unemployment Rate (Unadjusted)	6.5%	5.9%	5.4%
Total Employment	48.4	48.6	49.3

Notes: For notes and source, see end of Table 1

(Continued on next page)

Table 1 (Cont.)

Labor Force, Employment, Unemployment and Unemployment Rates^{(a)(b)}

(in Thousands)

<u>TUCSON MSA (Pima County)</u>	February 2021(c)	January 2021(d)	February 2020(d)	<u>Monthly/Yearly Change</u>	
				January '21 - February '21	February '20 - February '21
Civilian Labor Force ^(e)	495.9	495.5	507.7		
Unemployment	35.9	35.4	21.5		
Unemployment Rate (Unadjusted)	7.2%	7.1%	4.2%		
Total Employment	460.0	460.1	486.2		

<u>YUMA MSA (Yuma County)</u>					
Civilian Labor Force ^(e)	93.3	94.6	98.9		
Unemployment	11.0	10.6	11.9		
Unemployment Rate (Unadjusted)	11.8%	11.2%	12.0%		
Total Employment	82.3	83.9	87.0		

Notes: a) Labor force, unemployment, total employment, and unadjusted unemployment rates are produced by the Local Area Unemployment Statistics (LAUS) program in the Arizona Office of Employment and Population Statistics, in cooperation with the U.S. Dept. of Labor, Bureau of Labor Statistics (BLS). BLS data used as part of the input in producing LAUS data come from the monthly Household Survey, produced by the Census Bureau for the U.S. Department of Labor, Bureau of Labor Statistics.

For more information on the LAUS program, visit this website: <http://www.bls.gov/lau/laufaq.htm>

c) Preliminary

d) Revised

e) Adjusted to Current Population Survey (CPS 2017) to reflect place of residence

f) Normal seasonal variations have been eliminated to reflect underlying trends

MSA - Metropolitan Statistical Area

NA - Not Available

Source: Prepared by the Arizona Office of Economic Opportunity, in cooperation with the U.S. Dept. of Labor, Bureau of Labor Statistics

Table 2

Nonfarm Payroll Employment

(in Thousands, Not Seasonally Adjusted)

ARIZONA ^(a)				Amount Change		Percent Change	
	February 2021(b)	January 2021(c)	February 2020(c)	Monthly	Over-Year	Monthly	Over-Year
				January '21 - February '21	February '20 - February '21	January '21 - February '21	February '20 - February '21
Total Nonfarm Payroll Employment^(c,d)	2,885.3	2,868.2	3,007.6	17.1	-122.3	0.6%	-4.1%
Private Sector	2,473.8	2,460.3	2,569.5	13.5	-95.7	0.5%	-3.7%
Government	411.5	407.9	438.1	3.6	-26.6	0.9%	-6.1%
Goods-Producing Industries	361.5	360.6	368.2	0.9	-6.7	0.2%	-1.8%
Manufacturing	178.7	176.9	180.3	1.8	-1.6	1.0%	-0.9%
Durable Goods	135.8	134.8	136.6	1.0	-0.8	0.7%	-0.6%
Fabricated Metal	20.7	20.6	21.1	0.1	-0.4	0.5%	-1.9%
Computer and Electronic Parts	33.8	33.8	34.2	0.0	-0.4	0.0%	-1.2%
Aerospace Products and Parts	29.8	29.9	31.0	-0.1	-1.2	-0.3%	-3.9%
Nondurable Goods	42.9	42.1	43.7	0.8	-0.8	1.9%	-1.8%
Natural Resources and Mining	12.5	12.4	12.7	0.1	-0.2	0.8%	-1.6%
Metal Ore Mining	10.6	10.6	10.8	0.0	-0.2	0.0%	-1.9%
Construction	170.3	171.3	175.2	-1.0	-4.9	-0.6%	-2.8%
Buildings	34.2	33.8	35.8	0.4	-1.6	1.2%	-4.5%
Heavy	20.2	20.2	20.3	0.0	-0.1	0.0%	-0.5%
Specialty Trades	115.9	117.3	119.1	-1.4	-3.2	-1.2%	-2.7%
Service-Providing Industries	2,523.8	2,507.6	2,639.4	16.2	-115.6	0.6%	-4.4%
Private Service Providing	2,112.3	2,099.7	2,201.3	12.6	-89.0	0.6%	-4.0%
Trade, Transportation and Utilities	567.0	562.5	550.6	4.5	16.4	0.8%	3.0%
Trade	423.8	421.2	426.2	2.6	-2.4	0.6%	-0.6%
Wholesale Trade	96.5	95.4	100.4	1.1	-3.9	1.2%	-3.9%
Retail Trade	327.3	325.8	325.8	1.5	1.5	0.5%	0.5%
Motor Vehicles and Parts	48.9	48.4	50.3	0.5	-1.4	1.0%	-2.8%
Furniture and Home Furnishings	9.7	9.7	10.3	0.0	-0.6	0.0%	-5.8%
Building Material, Garden Supply	30.3	29.8	28.0	0.5	2.3	1.7%	8.2%
Food and Beverage	62.9	62.7	58.7	0.2	4.2	0.3%	7.2%
Clothing and Accessories	15.2	15.8	19.5	-0.6	-4.3	-3.8%	-22.1%
General Merchandise	64.1	65.5	62.5	-1.4	1.6	-2.1%	2.6%
Department Stores	17.2	18.4	19.6	-1.2	-2.4	-6.5%	-12.2%
Other General merchandise	46.9	47.1	42.9	-0.2	4.0	-0.4%	9.3%
Transp., Warehousing, and Utilities	143.2	141.3	124.4	1.9	18.8	1.3%	15.1%
Utilities	12.2	12.0	12.2	0.2	0.0	1.7%	0.0%
Transportation and Warehousing	131.0	129.3	112.2	1.7	18.8	1.3%	16.8%
Truck Transportation	24.7	24.3	23.6	0.4	1.1	1.6%	4.7%
Information	46.1	44.8	50.1	1.3	-4.0	2.9%	-8.0%
Telecommunications	15.0	14.4	15.2	0.6	-0.2	4.2%	-1.3%
Financial Activities	230.8	230.3	233.9	0.5	-3.1	0.2%	-1.3%
Finance and Insurance	179.4	179.4	175.8	0.0	3.6	0.0%	2.0%
Credit Intermediation., Monetary Auth.	94.0	94.0	90.2	0.0	3.8	0.0%	4.2%
Financial Investments and Vehicles	19.9	19.8	19.5	0.1	0.4	0.5%	2.1%
Insurance Carriers	65.5	65.6	66.1	-0.1	-0.6	-0.2%	-0.9%
Real Estate and Rental and Leasing	51.4	50.9	58.1	0.5	-6.7	1.0%	-11.5%
Professional and Business Services	432.2	431.7	451.1	0.5	-18.9	0.1%	-4.2%
Professional, Scientific and Technical Services	166.5	167.1	163.1	-0.6	3.4	-0.4%	2.1%
Management of Companies and Enterprises	32.0	31.9	33.7	0.1	-1.7	0.3%	-5.0%
Administrative and Waste Services	233.7	232.7	254.3	1.0	-20.6	0.4%	-8.1%
Employment Services	100.2	97.8	110.9	2.4	-10.7	2.5%	-9.6%
Business Support Services	34.1	35.3	37.9	-1.2	-3.8	-3.4%	-10.0%
Services to Buildings and Dwellings	44.8	44.9	45.2	-0.1	-0.4	-0.2%	-0.9%
Education and Health Services	467.0	465.4	480.2	1.6	-13.2	0.3%	-2.7%
Educational Services	69.1	68.8	74.7	0.3	-5.6	0.4%	-7.5%
Health Care and Social Assistance	397.9	396.6	405.5	1.3	-7.6	0.3%	-1.9%
Health Care	338.8	337.2	340.3	1.6	-1.5	0.5%	-0.4%
Ambulatory Health Care Services	181.6	180.8	179.1	0.8	2.5	0.4%	1.4%
Hospitals	99.8	99.5	101.2	0.3	-1.4	0.3%	-1.4%
Nursing and Residential Care Facilities	57.4	56.9	60.0	0.5	-2.6	0.9%	-4.3%
Social Assistance	59.1	59.4	65.2	-0.3	-6.1	-0.5%	-9.4%
Leisure and Hospitality	279.4	276.3	340.6	3.1	-61.2	1.1%	-18.0%
Arts, Entertainment and Recreation	34.1	33.9	47.1	0.2	-13.0	0.6%	-27.6%
Accommodation and Food Services	245.3	242.4	293.5	2.9	-48.2	1.2%	-16.4%
Accommodation	30.0	29.6	47.2	0.4	-17.2	1.4%	-36.4%
Food Services and Drinking Places	215.3	212.8	246.3	2.5	-31.0	1.2%	-12.6%
Other Services (except Public Administration)	89.8	88.7	94.8	1.1	-5.0	1.2%	-5.3%
Government	411.5	407.9	438.1	3.6	-26.6	0.9%	-6.1%
Federal Government	56.7	56.5	57.0	0.2	-0.3	0.4%	-0.5%
State Government	91.4	90.8	96.9	0.6	-5.5	0.7%	-5.7%
State Government Education	53.4	52.5	60.0	0.9	-6.6	1.7%	-11.0%
Other State Government	38.0	38.3	36.9	-0.3	1.1	-0.8%	3.0%
Local Government	263.4	260.6	284.2	2.8	-20.8	1.1%	-7.3%
Local Government Education	136.3	133.2	148.6	3.1	-12.3	2.3%	-8.3%
Other Local Government	127.1	127.4	135.6	-0.3	-8.5	-0.2%	-6.3%

Note: For notes and source, see end of Table 2

Table 2 (Cont.)

Nonfarm Payroll Employment

(in Thousands, Not Seasonally Adjusted)

PHOENIX-MESA-SCOTTSDALE MSA ¹				Amount Change		Percent Change	
	February 2021(b)	January 2021(c)	February 2020(c)	Monthly	Over-Year	Monthly	Over-Year
				January '21 - February '21	February '20 - February '21	January '21 - February '21	February '20 - February '21
Total Nonfarm Payroll Employment^(c,d)	2,153.9	2,140.5	2,233.5	13.4	-79.6	0.6%	-3.6%
Private Sector	1,911.4	1,899.9	1,978.4	11.5	-67.0	0.6%	-3.4%
Government	242.5	240.6	255.1	1.9	-12.6	0.8%	-4.9%
Goods-Producing Industries	268.2	268.2	276.5	0.0	-8.3	0.0%	-3.0%
Manufacturing	135.2	133.4	136.0	1.8	-0.8	1.3%	-0.6%
Durable Goods	100.5	99.0	100.9	1.5	-0.4	1.5%	-0.4%
Computer and Electronic Parts	30.2	30.2	30.4	0.0	-0.2	0.0%	-0.7%
Aerospace Products and Parts	16.0	16.0	17.2	0.0	-1.2	0.0%	-7.0%
Nondurable Goods	34.7	34.4	35.1	0.3	-0.4	0.9%	-1.1%
Natural Resources and Mining	2.8	2.8	3.3	0.0	-0.5	0.0%	-15.2%
Construction	130.2	132.0	137.2	-1.8	-7.0	-1.4%	-5.1%
Buildings	26.6	26.5	28.1	0.1	-1.5	0.4%	-5.3%
Heavy	14.1	14.2	14.9	-0.1	-0.8	-0.7%	-5.4%
Specialty Trades	89.5	91.3	94.2	-1.8	-4.7	-2.0%	-5.0%
Service-Providing Industries	1,885.7	1,872.3	1,957.0	13.4	-71.3	0.7%	-3.6%
Private Service Providing	1,643.2	1,631.7	1,701.9	11.5	-58.7	0.7%	-3.4%
Trade, Transportation and Utilities	427.9	424.0	416.5	3.9	11.4	0.9%	2.7%
Trade	316.9	315.3	319.4	1.6	-2.5	0.5%	-0.8%
Wholesale Trade	81.4	80.6	83.7	0.8	-2.3	1.0%	-2.7%
Retail Trade	235.5	234.7	235.7	0.8	-0.2	0.3%	-0.1%
Motor Vehicles and Parts	36.5	36.1	37.1	0.4	-0.6	1.1%	-1.6%
Building Material, Garden Supply	20.9	20.6	19.5	0.3	1.4	1.5%	7.2%
Food and Beverage	43.2	43.1	40.6	0.1	2.6	0.2%	6.4%
General Merchandise	44.2	45.2	42.1	-1.0	2.1	-2.2%	5.0%
Department Stores	13.1	13.8	14.8	-0.7	-1.7	-5.1%	-11.5%
Other General merchandise	31.1	31.4	27.3	-0.3	3.8	-1.0%	13.9%
Transportation, Warehousing and Utilities	111.0	108.7	97.1	2.3	13.9	2.1%	14.3%
Utilities	8.1	7.9	8.2	0.2	-0.1	2.5%	-1.2%
Transportation and warehousing	102.9	100.8	88.9	2.1	14.0	2.1%	15.7%
Truck transportation	18.9	18.7	18.4	0.2	0.5	1.1%	2.7%
Information	38.8	37.5	41.1	1.3	-2.3	3.5%	-5.6%
Telecommunications	12.5	11.9	12.5	0.6	0.0	5.0%	0.0%
Financial Activities	203.3	203.3	205.7	0.0	-2.4	0.0%	-1.2%
Finance and Insurance	162.2	162.7	158.4	-0.5	3.8	-0.3%	2.4%
Credit Intermediation., Monetary Auth.	87.2	87.0	82.9	0.2	4.3	0.2%	5.2%
Financial Investments and Vehicles	17.0	16.9	17.0	0.1	0.0	0.6%	0.0%
Insurance Carriers	58.0	58.8	58.5	-0.8	-0.5	-1.4%	-0.9%
Real Estate and Rental and Leasing	41.1	40.6	47.3	0.5	-6.2	1.2%	-13.1%
Professional and Business Services	361.9	361.4	372.8	0.5	-10.9	0.1%	-2.9%
Professional, Scientific and Technical Services	135.3	136.0	132.7	-0.7	2.6	-0.5%	2.0%
Management of Companies and Enterprises	29.4	29.4	31.2	0.0	-1.8	0.0%	-5.8%
Administrative and Waste Services	197.2	196.0	208.9	1.2	-11.7	0.6%	-5.6%
Employment Services	89.2	86.7	96.5	2.5	-7.3	2.9%	-7.6%
Business Support Services	24.2	24.5	26.0	-0.3	-1.8	-1.2%	-6.9%
Services to Buildings and Dwellings	37.5	37.6	35.7	-0.1	1.8	-0.3%	5.0%
Education and Health Services	346.3	344.5	353.2	1.8	-6.9	0.5%	-2.0%
Educational Services	56.9	56.7	62.4	0.2	-5.5	0.4%	-8.8%
Health Care and Social Assistance	289.4	287.8	290.8	1.6	-1.4	0.6%	-0.5%
Health Care	245.4	244.1	243.3	1.3	2.1	0.5%	0.9%
Ambulatory Health Care Services	139.9	139.6	136.2	0.3	3.7	0.2%	2.7%
Hospitals	66.2	65.6	66.0	0.6	0.2	0.9%	0.3%
Nursing and Residential Care Facilities	39.3	38.9	41.1	0.4	-1.8	1.0%	-4.4%
Social Assistance	44.0	43.7	47.5	0.3	-3.5	0.7%	-7.4%
Leisure and Hospitality	197.8	195.1	242.3	2.7	-44.5	1.4%	-18.4%
Arts, Entertainment and Recreation	26.4	26.4	37.6	0.0	-11.2	0.0%	-29.8%
Accommodation and Food Services	171.4	168.7	204.7	2.7	-33.3	1.6%	-16.3%
Accommodation	16.1	15.6	27.8	0.5	-11.7	3.2%	-42.1%
Food Services and Drinking Places	155.3	153.1	176.9	2.2	-21.6	1.4%	-12.2%
Other Services (except Public Administration)	67.2	65.9	70.3	1.3	-3.1	2.0%	-4.4%
Government	242.5	240.6	255.1	1.9	-12.6	0.8%	-4.9%
Federal Government	23.8	23.7	23.9	0.1	-0.1	0.4%	-0.4%
State Government	53.2	52.7	54.2	0.5	-1.0	0.9%	-1.8%
State Government Education	26.6	25.8	28.1	0.8	-1.5	3.1%	-5.3%
Local Government	165.5	164.2	177.0	1.3	-11.5	0.8%	-6.5%
Local Government Education	89.9	88.4	97.4	1.5	-7.5	1.7%	-7.7%

Note: 1) Phoenix-Mesa-Scottsdale Metropolitan Area includes Maricopa and Pinal counties. For other notes and source, see end of Table 2

Table 2 (Cont.)

Nonfarm Payroll Employment

(in Thousands, Not Seasonally Adjusted)

TUCSON MSA ³				Amount Change		Percent Change	
	February 2021(b)	January 2021(c)	February 2020(c)	Monthly	Over-Year	Monthly	Over-Year
				January '21 - February '21	February '20 - February '21	January '21 - February '21	February '20 - February '21
Total Nonfarm Payroll Employment^(c,d)	374.5	374.0	397.5	0.5	-23.0	0.1%	-5.8%
Private Sector	300.1	300.1	316.0	0.0	-15.9	0.0%	-5.0%
Government	74.4	73.9	81.5	0.5	-7.1	0.7%	-8.7%
Goods-Producing Industries	47.1	47.2	47.7	-0.1	-0.6	-0.2%	-1.3%
Manufacturing	27.2	27.2	27.7	0.0	-0.5	0.0%	-1.8%
Aerospace Products and Parts	13.5	13.5	13.6	0.0	-0.1	0.0%	-0.7%
Natural Resources and Mining	1.9	1.9	1.8	0.0	0.1	0.0%	5.6%
Construction	18.0	18.1	18.2	-0.1	-0.2	-0.6%	-1.1%
Specialty Trades	12.3	12.4	13.2	-0.1	-0.9	-0.8%	-6.8%
Service-Providing Industries	327.4	326.8	349.8	0.6	-22.4	0.2%	-6.4%
Private Service Providing	253.0	252.9	268.3	0.1	-15.3	0.0%	-5.7%
Trade, Transportation and Utilities	68.1	68.0	63.2	0.1	4.9	0.1%	7.8%
Trade	48.3	48.3	48.4	0.0	-0.1	0.0%	-0.2%
Wholesale Trade	6.8	6.7	7.3	0.1	-0.5	1.5%	-6.8%
Retail Trade	41.5	41.6	41.1	-0.1	0.4	-0.2%	1.0%
General Merchandise	8.8	9.1	8.1	-0.3	0.7	-3.3%	8.6%
Department Stores	2.3	2.5	2.5	-0.2	-0.2	-8.0%	-8.0%
Other General Merchandise	6.5	6.6	5.6	-0.1	0.9	-1.5%	16.1%
Food and Beverage Stores	9.6	9.5	8.8	0.1	0.8	1.1%	9.1%
Transportation, Warehousing and Utilities	19.8	19.7	14.8	0.1	5.0	0.5%	33.8%
Information	5.1	5.0	6.1	0.1	-1.0	2.0%	-16.4%
Financial Activities	17.8	17.6	17.6	0.2	0.2	1.1%	1.1%
Professional and Business Services	47.1	47.1	51.1	0.0	-4.0	0.0%	-7.8%
Professional, Scientific and Technical Services	19.5	19.4	18.9	0.1	0.6	0.5%	3.2%
Administrative and Waste Services	25.5	26.0	30.7	-0.5	-5.2	-1.9%	-16.9%
Employment Services	8.9	8.8	11.0	0.1	-2.1	1.1%	-19.1%
Business Support Services	8.0	8.1	9.1	-0.1	-1.1	-1.2%	-12.1%
Education and Health Services	66.9	67.0	70.5	-0.1	-3.6	-0.1%	-5.1%
Health Care	50.6	50.6	52.5	0.0	-1.9	0.0%	-3.6%
Ambulatory Health Care Services	23.3	23.4	24.1	-0.1	-0.8	-0.4%	-3.3%
Hospitals	16.8	16.8	17.4	0.0	-0.6	0.0%	-3.4%
Nursing and Residential Care Facilities	10.5	10.4	11.0	0.1	-0.5	1.0%	-4.5%
Leisure and Hospitality	35.1	35.5	45.6	-0.4	-10.5	-1.1%	-23.0%
Accommodations and Food Services	31.1	31.1	40.0	0.0	-8.9	0.0%	-22.3%
Accommodations	3.8	3.7	7.3	0.1	-3.5	2.7%	-47.9%
Food Services and Drinking Places	27.3	27.4	32.7	-0.1	-5.4	-0.4%	-16.5%
Other Services (except Public Administration)	12.9	12.7	14.2	0.2	-1.3	1.6%	-9.2%
Government	74.4	73.9	81.5	0.5	-7.1	0.7%	-8.7%
Federal Government	12.8	12.8	13.0	0.0	-0.2	0.0%	-1.5%
State Government	24.5	24.3	27.3	0.2	-2.8	0.8%	-10.3%
State Government Education	19.6	19.3	22.7	0.3	-3.1	1.6%	-13.7%
Local Government	37.1	36.8	41.2	0.3	-4.1	0.8%	-10.0%
Local Government Education	18.9	18.4	22.0	0.5	-3.1	2.7%	-14.1%

Note: 3) Tucson Metropolitan Area includes all of Pima County. For other notes and source, see end of Table 2.

Table 2 (Cont.)

Nonfarm Payroll Employment

(in Thousands, Not Seasonally Adjusted)

YUMA MSA ⁴	February 2021(b)	January 2021(c)	February 2020(c)	Amount Change		Percent Change	
				Monthly	Over-Year	Monthly	Over-Year
				January '21 - February '21	February '20 - February '21	January '21 - February '21	February '20 - February '21
Total Nonfarm Payroll Employment^(c,d)	55.7	56.1	60.6	-0.4	-4.9	-0.7%	-8.1%
Private Sector	41.6	42.1	45.6	-0.5	-4.0	-1.2%	-8.8%
Government	14.1	14.0	15.0	0.1	-0.9	0.7%	-6.0%
Goods-Producing Industries	6.4	6.7	6.6	-0.3	-0.2	-4.5%	-3.0%
Manufacturing	3.2	3.2	3.1	0.0	0.1	0.0%	3.2%
Natural Resources and Construction	3.2	3.5	3.5	-0.3	-0.3	-8.6%	-8.6%
Service-Providing Industries	49.3	49.4	54.0	-0.1	-4.7	-0.2%	-8.7%
Private Service Providing	35.2	35.4	39.0	-0.2	-3.8	-0.6%	-9.7%
Trade, Transportation and Utilities	11.1	11.0	11.9	0.1	-0.8	0.9%	-6.7%
Information	0.3	0.4	0.4	-0.1	-0.1	-25.0%	-25.0%
Financial Activities	1.9	1.9	2.2	0.0	-0.3	0.0%	-13.6%
Professional and Business Services	6.7	6.8	7.7	-0.1	-1.0	-1.5%	-13.0%
Education and Health Services	7.9	8.0	8.3	-0.1	-0.4	-1.3%	-4.8%
Leisure and Hospitality	5.5	5.5	6.7	0.0	-1.2	0.0%	-17.9%
Other Services (except Public Administration)	1.8	1.8	1.8	0.0	0.0	0.0%	0.0%
Government	14.1	14.0	15.0	0.1	-0.9	0.7%	-6.0%
Federal Government	3.6	3.6	3.7	0.0	-0.1	0.0%	-2.7%
State and Local Government	10.5	10.4	11.3	0.1	-0.8	1.0%	-7.1%

Note: 4) Yuma Metropolitan Area includes all of Yuma County. For other notes and source, see end of Table 2

FLAGSTAFF MSA ⁵	February 2021(b)	January 2021(c)	February 2020(c)	Amount Change		Percent Change	
				Monthly	Over-Year	Monthly	Over-Year
				January '21 - February '21	February '20 - February '21	January '21 - February '21	February '20 - February '21
Total Nonfarm Payroll Employment^(c,d)	62.0	61.7	67.4	0.3	-5.4	0.5%	-8.0%
Private Sector	43.7	43.2	47.1	0.5	-3.4	1.2%	-7.2%
Government	18.3	18.5	20.3	-0.2	-2.0	-1.1%	-9.9%
Goods-Producing Industries	6.4	6.4	6.4	0.0	0.0	0.0%	0.0%
Manufacturing	3.8	3.8	3.9	0.0	-0.1	0.0%	-2.6%
Natural Resources and Construction	2.6	2.6	2.5	0.0	0.1	0.0%	4.0%
Service-Providing Industries	55.6	55.3	61.0	0.3	-5.4	0.5%	-8.9%
Private Service Providing	37.3	36.8	40.7	0.5	-3.4	1.4%	-8.4%
Trade, Transportation and Utilities	8.7	8.7	9.0	0.0	-0.3	0.0%	-3.3%
Information	0.4	0.4	0.4	0.0	0.0	0.0%	0.0%
Financial Activities	1.4	1.4	1.5	0.0	-0.1	0.0%	-6.7%
Professional and Business Services	2.7	2.9	3.3	-0.2	-0.6	-6.9%	-18.2%
Education and Health Services	9.2	9.1	9.7	0.1	-0.5	1.1%	-5.2%
Leisure and Hospitality	13.2	12.6	15.0	0.6	-1.8	4.8%	-12.0%
Other Services (except Public Administration)	1.7	1.7	1.8	0.0	-0.1	0.0%	-5.6%
Government	18.3	18.5	20.3	-0.2	-2.0	-1.1%	-9.9%
Federal Government	2.4	2.4	2.5	0.0	-0.1	0.0%	-4.0%
State and Local Government	15.9	16.1	17.8	-0.2	-1.9	-1.2%	-10.7%

Notes: 5) Flagstaff Metropolitan Area includes all of Coconino County. For other notes and source, see end of Table 2

Table 2 (Cont.)

Nonfarm Payroll Employment

(in Thousands, Not Seasonally Adjusted)

PRESCOTT MSA ⁶	February 2021(b)	January 2021(c)	February 2020(c)	Amount Change		Percent Change	
				Monthly	Over-Year	Monthly	Over-Year
				January '21 - February '21	February '20 - February '21	January '21 - February '21	February '20 - February '21
Total Nonfarm Payroll Employment^(c,d)	65.5	64.6	66.4	0.9	-0.9	1.4%	-1.4%
Private Sector	55.0	54.4	55.3	0.6	-0.3	1.1%	-0.5%
Government	10.5	10.2	11.1	0.3	-0.6	2.9%	-5.4%
Goods-Producing Industries	10.4	10.2	10.1	0.2	0.3	2.0%	3.0%
Manufacturing	3.7	3.7	3.7	0.0	0.0	0.0%	0.0%
Natural Resources and Construction	6.7	6.5	6.4	0.2	0.3	3.1%	4.7%
Service-Providing Industries	55.1	54.4	56.3	0.7	-1.2	1.3%	-2.1%
Private Service Providing	44.6	44.2	45.2	0.4	-0.6	0.9%	-1.3%
Trade, Transportation and Utilities	13.2	13.1	12.7	0.1	0.5	0.8%	3.9%
Information	0.5	0.5	0.5	0.0	0.0	0.0%	0.0%
Financial Activities	2.2	2.2	2.2	0.0	0.0	0.0%	0.0%
Professional and Business Services	4.9	4.8	4.6	0.1	0.3	2.1%	6.5%
Education and Health Services	12.3	12.0	12.6	0.3	-0.3	2.5%	-2.4%
Leisure and Hospitality	9.2	9.3	10.3	-0.1	-1.1	-1.1%	-10.7%
Other Services (except Public Administration)	2.3	2.3	2.3	0.0	0.0	0.0%	0.0%
Government	10.5	10.2	11.1	0.3	-0.6	2.9%	-5.4%
Federal Government	1.6	1.5	1.5	0.1	0.1	6.7%	6.7%
State and Local Government	8.9	8.7	9.6	0.2	-0.7	2.3%	-7.3%

Note: 6) Prescott Metropolitan Area includes all of Yavapai County. For other notes and source, see end of Table 2

LAKE HAVASU CITY-KINGMAN MSA⁷

LAKE HAVASU CITY-KINGMAN MSA ⁷	February 2021(b)	January 2021(c)	February 2020(c)	Amount Change		Percent Change	
				Monthly	Over-Year	Monthly	Over-Year
				January '21 - February '21	February '20 - February '21	January '21 - February '21	February '20 - February '21
Total Nonfarm Payroll Employment^(c,d)	52.1	51.9	52.8	0.2	-0.7	0.4%	-1.3%
Private Sector	44.2	44.0	44.3	0.2	-0.1	0.5%	-0.2%
Government	7.9	7.9	8.5	0.0	-0.6	0.0%	-7.1%
Goods-Producing Industries	6.9	6.9	6.6	0.0	0.3	0.0%	4.5%
Manufacturing	3.0	3.0	3.1	0.0	-0.1	0.0%	-3.2%
Natural Resources and Construction	3.9	3.9	3.5	0.0	0.4	0.0%	11.4%
Service-Providing Industries	45.2	45.0	46.2	0.2	-1.0	0.4%	-2.2%
Private Service Providing	37.3	37.1	37.7	0.2	-0.4	0.5%	-1.1%
Trade, Transportation and Utilities	13.1	12.9	12.7	0.2	0.4	1.6%	3.1%
Information	0.5	0.5	0.5	0.0	0.0	0.0%	0.0%
Financial Activities	1.9	1.9	1.9	0.0	0.0	0.0%	0.0%
Professional and Business Services	3.5	3.6	4.2	-0.1	-0.7	-2.8%	-16.7%
Education and Health Services	8.9	9.0	9.2	-0.1	-0.3	-1.1%	-3.3%
Leisure and Hospitality	7.5	7.3	7.3	0.2	0.2	2.7%	2.7%
Other Services (except Public Administration)	1.9	1.9	1.9	0.0	0.0	0.0%	0.0%
Government	7.9	7.9	8.5	0.0	-0.6	0.0%	-7.1%
Federal Government	0.5	0.5	0.5	0.0	0.0	0.0%	0.0%
State and Local Government	7.4	7.4	8.0	0.0	-0.6	0.0%	-7.5%

Note: 7) Lake Havasu City-Kingman Metropolitan Area includes all of Mohave County
For other notes and source, see next page

Table 2 (Cont.)

Nonfarm Payroll Employment

(in Thousands, Not Seasonally Adjusted)

SIERRA VISTA-DOUGLAS MSA⁸

				Amount Change		Percent Change	
	February 2021(b)	January 2021(c)	February 2020(c)	Monthly	Over-Year	Monthly	Over-Year
				January '21 - February '21	February '20 - February '21	January '21 - February '21	February '20 - February '21
Total Nonfarm Payroll Employment^(c,d)	34.3	34.3	35.0	0.0	-0.7	0.0%	-2.0%
Private Sector	23.7	23.8	24.0	-0.1	-0.3	-0.4%	-1.3%
Government	10.6	10.5	11.0	0.1	-0.4	1.0%	-3.6%
Goods-Producing Industries	4.2	4.1	3.1	0.1	1.1	2.4%	35.5%
Manufacturing	0.7	0.6	0.6	0.1	0.1	16.7%	16.7%
Natural Resources and Construction	3.5	3.5	2.5	0.0	1.0	0.0%	40.0%
Service-Providing Industries	30.1	30.2	31.9	-0.1	-1.8	-0.3%	-5.6%
Private Service Providing	19.5	19.7	20.9	-0.2	-1.4	-1.0%	-6.7%
Trade, Transportation and Utilities	6.1	6.2	6.2	-0.1	-0.1	-1.6%	-1.6%
Information	0.3	0.3	0.4	0.0	-0.1	0.0%	-25.0%
Financial Activities	0.8	0.8	0.8	0.0	0.0	0.0%	0.0%
Professional and Business Services	4.4	4.5	4.5	-0.1	-0.1	-2.2%	-2.2%
Education and Health Services	4.3	4.3	4.7	0.0	-0.4	0.0%	-8.5%
Leisure and Hospitality	2.9	2.9	3.6	0.0	-0.7	0.0%	-19.4%
Other Services (except Public Administration)	0.7	0.7	0.7	0.0	0.0	0.0%	0.0%
Government	10.6	10.5	11.0	0.1	-0.4	1.0%	-3.6%
Federal Government	4.8	4.8	4.8	0.0	0.0	0.0%	0.0%
State and Local Government	5.8	5.7	6.2	0.1	-0.4	1.8%	-6.5%

Note: 8) Sierra Vista Douglas Metropolitan Area includes all of Cochise County
For other notes and source, see next page)

Other notes and sources:

a) Nonfarm employment at the state and substate level is produced from the monthly establishment survey by the Current Employment Statistics (CES)
For more information on the establishment survey, see: <http://www.bls.gov/bls/empstquickguide.htm>

b) Preliminary and subject to revision the following month

c) Revised

d) By place of work; does not include agricultural workers, self-employed, unpaid family members, and domestic workers

e) Detail may not add up exactly due to rounding

MSA — Metropolitan Statistical Area

NA — Not Available

Source: Prepared by the Arizona Office of Economic Opportunity, in cooperation with the U.S. Dept. of Labor, Bureau of Labor Statistics

Labor Force

Prepared in Cooperation with the U.S. Department of Labor, Bureau of Labor Statistics

Arizona Office of Economic Opportunity

NOTE: 2021 county estimates have been revised. 2020 county estimates have not. Comparison between the two is not recommended.

2021

Apache County

	JAN	FEB	MAR	APR	MAY	JUN	JUL	AUG	SEP	OCT	NOV	DEC	AVG
Civilian Labor Force	19,887	19,940											
Employment	17,560	17,555											
Unemployment	2,327	2,385											
Unemployment rate	11.7	12.0											

Adjusted to the Current Population Survey (CPS 2021) to reflect place of residence

Equal Opportunity Employer/ Program available in alternative format/ reasonable accommodations: 602-771-1110, TDD 1-800-367-8939

Labor Force

Prepared in Cooperation with the U.S. Department of Labor, Bureau of Labor Statistics

Arizona Office of Economic Opportunity

2021

Cochise County(Sierra-Vista Douglas MSA)

	JAN	FEB	MAR	APR	MAY	JUN	JUL	AUG	SEP	OCT	NOV	DEC	AVG
Civilian Labor Force	51,637	51,754											
Employment	48,591	48,408											
Unemployment	3,046	3,346											
Unemployment rate	5.9	6.5											

Adjusted to the Current Population Survey (CPS 2021) to reflect place of residence

Equal Opportunity Employer/ Program available in alternative format/ reasonable accommodations: 602-771-1110, TDD 1-800-367-8939

Labor Force

Prepared in Cooperation with the U.S. Department of Labor, Bureau of Labor Statistics

Arizona Office of Economic Opportunity

2021

Coconino County(Flagstaff MSA)

[illegible]

Adjusted to the Current Population Survey (CPS 2021) to reflect place of residence

Equal Opportunity Employer/ Program available in alternative format/ reasonable accomodations: 602-771-1110, TDD 1-800-367-8939

Labor Force

Prepared in Cooperation with the U.S. Department of Labor, Bureau of Labor Statistics

Arizona Office of Economic Opportunity

2021

Gila County

[illegible]

Adjusted to the Current Population Survey (CPS 2021) to reflect place of residence

Equal Opportunity Employer/ Program available in alternative format/ reasonable accomodations: 602-771-1110, TDD 1-800-367-8939

Labor Force

Prepared in Cooperation with the U.S. Department of Labor, Bureau of Labor Statistics

Arizona Office of Economic Opportunity

2021

Graham County

[illegible]

Adjusted to the Current Population Survey (CPS 2021) to reflect place of residence

Equal Opportunity Employer/ Program available in alternative format/ reasonable accommodations: 602-771-1110, TDD 1-800-367-8939

Labor Force

Prepared in Cooperation with the U.S. Department of Labor, Bureau of Labor Statistics

Arizona Office of Economic Opportunity

2021

Greenlee County

	JAN	FEB	MAR	APR	MAY	JUN	JUL	AUG	SEP	OCT	NOV	DEC	AVG
Civilian Labor Force	4,449	4,470											
Employment	4,189	4,206											
Unemployment	260	264											
Unemployment rate	5.8	5.9											

Adjusted to the Current Population Survey (CPS 2021) to reflect place of residence

Equal Opportunity Employer/ Program available in alternative format/ reasonable accommodations: 602-771-1110, TDD 1-800-367-8939

Labor Force

Prepared in Cooperation with the U.S. Department of Labor, Bureau of Labor Statistics

Arizona Office of Economic Opportunity

2021

La Paz County

	JAN	FEB	MAR	APR	MAY	JUN	JUL	AUG	SEP	OCT	NOV	DEC	AVG
Civilian Labor Force	9,164	9,045											
Employment	8,606	8,425											
Unemployment	558	620											
Unemployment rate	6.1	6.9											

Adjusted to the Current Population Survey (CPS 2021) to reflect place of residence

Equal Opportunity Employer/ Program available in alternative format/ reasonable accommodations: 602-771-1110, TDD 1-800-367-8939

Labor Force
Prepared in Cooperation with the U.S. Department of Labor, Bureau of Labor Statistics
Arizona Office of Economic Opportunity

2021
Maricopa County

	JAN	FEB	MAR	APR	MAY	JUN	JUL	AUG	SEP	OCT	NOV	DEC	AVG
Civilian Labor Force	2,340,388	2,353,556											
Employment	2,186,220	2,197,344											
Unemployment	154,168	156,212											
Unemployment rate	6.6	6.6											

Adjusted to the Current Population Survey (CPS 2021) to reflect place of residence
Equal Opportunity Employer/ Program available in alternative format/ reasonable accomodations: 602-771-1110, TDD 1-800-367-8939

Labor Force
Prepared in Cooperation with the U.S. Department of Labor, Bureau of Labor Statistics
Arizona Office of Economic Opportunity

2021
Mohave County(Lake Havasu City-Kingman MSA)

	JAN	FEB	MAR	APR	MAY	JUN	JUL	AUG	SEP	OCT	NOV	DEC	AVG
Civilian Labor Force	87,431	87,879											
Employment	80,773	81,065											
Unemployment	6,658	6,814											
Unemployment rate	7.6	7.8											

Adjusted to the Current Population Survey (CPS 2021) to reflect place of residence
Equal Opportunity Employer/ Program available in alternative format/ reasonable accomodations: 602-771-1110, TDD 1-800-367-8939

Labor Force
Prepared in Cooperation with the U.S. Department of Labor, Bureau of Labor Statistics
Arizona Office of Economic Opportunity

2021
Navajo County

[illegible]

Adjusted to the Current Population Survey (CPS 2021) to reflect place of residence

Equal Opportunity Employer/ Program available in alternative format/ reasonable accomodations: 602-771-1110, TDD 1-800-367-8939

Labor Force

Prepared in Cooperation with the U.S. Department of Labor, Bureau of Labor Statistics

Arizona Office of Economic Opportunity

2021

Pima County(Tucson MSA)

[illegible]

Adjusted to the Current Population Survey (CPS 2021) to reflect place of residence

Equal Opportunity Employer/ Program available in alternative format/ reasonable accomodations: 602-771-1110, TDD 1-800-367-8939

Labor Force

Prepared in Cooperation with the U.S. Department of Labor, Bureau of Labor Statistics

Arizona Office of Economic Opportunity

2021

Pinal County

[illegible]

Adjusted to the Current Population Survey (CPS 2021) to reflect place of residence

Equal Opportunity Employer/ Program available in alternative format/ reasonable accommodations: 602-771-1110, TDD 1-800-367-8939

Labor Force

Prepared in Cooperation with the U.S. Department of Labor, Bureau of Labor Statistics

Arizona Office of Economic Opportunity

2021

Santa Cruz County

	JAN	FEB	MAR	APR	MAY	JUN	JUL	AUG	SEP	OCT	NOV	DEC	AVG
Civilian Labor Force	19,649	19,599											
Employment	17,600	17,479											
Unemployment	2,049	2,120											
Unemployment rate	10.4	10.8											

Adjusted to the Current Population Survey (CPS 2021) to reflect place of residence

Equal Opportunity Employer/ Program available in alternative format/ reasonable accommodations: 602-771-1110, TDD 1-800-367-8939

Labor Force

Prepared in Cooperation with the U.S. Department of Labor, Bureau of Labor Statistics

Arizona Office of Economic Opportunity

2021

Yavapai County(Prescott MSA)

	JAN	FEB	MAR	APR	MAY	JUN	JUL	AUG	SEP	OCT	NOV	DEC	AVG
Civilian Labor Force	107,130	107,969											
Employment	100,724	101,438											
Unemployment	6,406	6,531											
Unemployment rate	6.0	6.0											

Adjusted to the Current Population Survey (CPS 2021) to reflect place of residence

Equal Opportunity Employer/ Program available in alternative format/ reasonable accommodations: 602-771-1110, TDD 1-800-367-8939

Labor Force
Prepared in Cooperation with the U.S. Department of Labor, Bureau of Labor Statistics
Arizona Office of Economic Opportunity

2021
Yuma County(Yuma MSA)

	JAN	FEB	MAR	APR	MAY	JUN	JUL	AUG	SEP	OCT	NOV	DEC	AVG
Civilian Labor Force	94,563	93,264											
Employment	83,943	82,253											
Unemployment	10,620	11,011											
Unemployment rate	11.2	11.8											

Adjusted to the Current Population Survey (CPS 2021) to reflect place of residence
Equal Opportunity Employer/ Program available in alternative format/ reasonable accomodations: 602-771-1110, TDD 1-800-367-8939

Labor Force

Prepared in Cooperation with the U.S. Department of Labor, Bureau of Labor Statistics

Arizona Office of Economic Opportunity

NOTE: 2021 county estimates have been revised. 2020 county estimates have not. Comparison between the two is not recommended.

2020

Apache County

	JAN	FEB	MAR	APR	MAY	JUN	JUL	AUG	SEP	OCT	NOV	DEC	AVG
Civilian Labor Force	20,785	20,710	21,128	20,086	19,607	19,679	19,506	19,202	20,199	20,060	19,844	19,726	
Employment	18,490	18,588	18,198	16,923	17,415	16,476	15,976	17,220	17,983	17,548	17,316	17,249	
Unemployment	2,295	2,122	2,930	3,163	2,192	3,203	3,530	1,982	2,216	2,512	2,528	2,477	
Unemployment rate	11.0	10.2	13.9	15.7	11.2	16.3	18.1	10.3	11.0	12.5	12.7	12.6	

Adjusted to the Current Population Survey (CPS 2020) to reflect place of residence

Equal Opportunity Employer/ Program available in alternative format/ reasonable accommodations: 602-771-1110, TDD 1-800-367-8939

Labor Force

Prepared in Cooperation with the U.S. Department of Labor, Bureau of Labor Statistics

Arizona Office of Economic Opportunity

2020

Cochise County(Sierra-Vista Douglas MSA)

	JAN	FEB	MAR	APR	MAY	JUN	JUL	AUG	SEP	OCT	NOV	DEC	AVG
Civilian Labor Force	51,901	52,169	52,093	50,443	51,250	50,825	51,701	50,003	52,305	52,130	51,669	51,269	
Employment	48,897	49,345	48,245	44,850	47,570	46,355	46,865	47,374	49,408	48,745	48,302	47,992	
Unemployment	3,004	2,824	3,848	5,593	3,680	4,470	4,836	2,629	2,897	3,385	3,367	3,277	
Unemployment rate	5.8	5.4	7.4	11.1	7.2	8.8	9.4	5.3	5.5	6.5	6.5	6.4	

Adjusted to the Current Population Survey (CPS 2020) to reflect place of residence

Equal Opportunity Employer/ Program available in alternative format/ reasonable accommodations: 602-771-1110, TDD 1-800-367-8939

Labor Force

Prepared in Cooperation with the U.S. Department of Labor, Bureau of Labor Statistics

Arizona Office of Economic Opportunity

2020

Coconino County(Flagstaff MSA)

	JAN	FEB	MAR	APR	MAY	JUN	JUL	AUG	SEP	OCT	NOV	DEC	AVG
Civilian Labor Force	77,687	77,685	77,165	71,690	70,186	70,331	70,061	66,826	69,962	69,805	69,137	68,305	
Employment	72,788	73,191	70,937	59,231	61,948	60,945	60,444	61,553	64,251	63,077	62,435	61,721	
Unemployment	4,899	4,494	6,228	12,459	8,238	9,386	9,617	5,273	5,711	6,728	6,702	6,584	
Unemployment rate	6.3	5.8	8.1	17.4	11.7	13.3	13.7	7.9	8.2	9.6	9.7	9.6	

Adjusted to the Current Population Survey (CPS 2020) to reflect place of residence

Equal Opportunity Employer/ Program available in alternative format/ reasonable accommodations: 602-771-1110, TDD 1-800-367-8939

Labor Force

Prepared in Cooperation with the U.S. Department of Labor, Bureau of Labor Statistics

Arizona Office of Economic Opportunity

2020

Gila County

	JAN	FEB	MAR	APR	MAY	JUN	JUL	AUG	SEP	OCT	NOV	DEC	AVG
Civilian Labor Force	21,565	21,577	21,547	21,205	20,990	20,675	20,609	20,120	21,150	20,993	20,849	20,682	
Employment	20,325	20,418	19,937	18,722	19,408	18,765	18,465	18,928	19,817	19,399	19,229	19,130	
Unemployment	1,240	1,159	1,610	2,483	1,582	1,910	2,144	1,192	1,333	1,594	1,620	1,552	
Unemployment rate	5.8	5.4	7.5	11.7	7.5	9.2	10.4	5.9	6.3	7.6	7.8	7.5	

Adjusted to the Current Population Survey (CPS 2020) to reflect place of residence

Equal Opportunity Employer/ Program available in alternative format/ reasonable accommodations: 602-771-1110, TDD 1-800-367-8939

Labor Force

Prepared in Cooperation with the U.S. Department of Labor, Bureau of Labor Statistics

Arizona Office of Economic Opportunity

2020

Graham County

	JAN	FEB	MAR	APR	MAY	JUN	JUL	AUG	SEP	OCT	NOV	DEC	AVG
Civilian Labor Force	15,417	15,909	15,865	15,390	15,510	14,916	14,490	14,529	15,848	15,788	15,714	15,737	
Employment	14,640	15,152	14,825	14,210	14,580	13,591	13,043	13,762	14,998	14,806	14,714	14,700	
Unemployment	777	757	1,040	1,180	930	1,325	1,447	767	850	982	1,000	1,037	
Unemployment rate	5.0	4.8	6.6	7.7	6.0	8.9	10.0	5.3	5.4	6.2	6.4	6.6	

Adjusted to the Current Population Survey (CPS 2020) to reflect place of residence

Equal Opportunity Employer/ Program available in alternative format/ reasonable accommodations: 602-771-1110, TDD 1-800-367-8939

Labor Force

Prepared in Cooperation with the U.S. Department of Labor, Bureau of Labor Statistics

Arizona Office of Economic Opportunity

2020

Greenlee County

	JAN	FEB	MAR	APR	MAY	JUN	JUL	AUG	SEP	OCT	NOV	DEC	AVG
Civilian Labor Force	4,585	4,628	4,578	4,560	4,578	4,625	4,666	4,471	4,631	4,652	4,575	4,515	
Employment	4,413	4,458	4,339	4,315	4,386	4,296	4,288	4,264	4,407	4,374	4,299	4,243	
Unemployment	172	170	239	245	192	329	378	207	224	278	276	272	
Unemployment rate	3.8	3.7	5.2	5.4	4.2	7.1	8.1	4.6	4.8	6.0	6.0	6.0	

Adjusted to the Current Population Survey (CPS 2020) to reflect place of residence

Equal Opportunity Employer/ Program available in alternative format/ reasonable accommodations: 602-771-1110, TDD 1-800-367-8939

Labor Force

Prepared in Cooperation with the U.S. Department of Labor, Bureau of Labor Statistics

Arizona Office of Economic Opportunity

2020

La Paz County

	JAN	FEB	MAR	APR	MAY	JUN	JUL	AUG	SEP	OCT	NOV	DEC	AVG
Civilian Labor Force	9,751	9,774	9,978	9,072	8,799	8,750	8,711	8,748	9,601	9,866	9,975	9,653	
Employment	9,168	9,224	9,215	8,288	8,269	8,051	7,924	8,244	9,016	9,221	9,338	9,039	
Unemployment	583	550	763	784	530	699	787	504	585	645	637	614	
Unemployment rate	6.0	5.6	7.6	8.6	6.0	8.0	9.0	5.8	6.1	6.5	6.4	6.4	

Adjusted to the Current Population Survey (CPS 2020) to reflect place of residence

Equal Opportunity Employer/ Program available in alternative format/ reasonable accommodations: 602-771-1110, TDD 1-800-367-8939

Labor Force

Prepared in Cooperation with the U.S. Department of Labor, Bureau of Labor Statistics

Arizona Office of Economic Opportunity

2020

Maricopa County

	JAN	FEB	MAR	APR	MAY	JUN	JUL	AUG	SEP	OCT	NOV	DEC	AVG
Civilian Labor Force	2,360,096	2,373,098	2,334,396	2,307,896	2,315,974	2,296,480	2,332,989	2,232,850	2,349,862	2,354,746	2,346,073	2,346,214	
Employment	2,266,177	2,283,286	2,209,663	2,019,432	2,123,837	2,072,534	2,090,853	2,101,917	2,205,048	2,179,479	2,173,570	2,184,519	
Unemployment	93,919	89,812	124,733	288,464	192,137	223,946	242,136	130,933	144,814	175,267	172,503	161,695	
Unemployment rate	4.0	3.8	5.3	12.5	8.3	9.8	10.4	5.9	6.2	7.4	7.4	6.9	

Adjusted to the Current Population Survey (CPS 2020) to reflect place of residence

Equal Opportunity Employer/ Program available in alternative format/ reasonable accommodations: 602-771-1110, TDD 1-800-367-8939

Labor Force

Prepared in Cooperation with the U.S. Department of Labor, Bureau of Labor Statistics

Arizona Office of Economic Opportunity

2020

Mohave County(Lake Havasu City-Kingman MSA)

	JAN	FEB	MAR	APR	MAY	JUN	JUL	AUG	SEP	OCT	NOV	DEC	AVG
Civilian Labor Force	89,027	89,571	88,261	86,810	88,464	86,439	87,932	83,356	87,378	87,146	86,303	85,783	
Employment	83,775	84,668	81,466	70,023	76,387	75,455	76,805	77,148	80,500	79,311	78,707	78,617	
Unemployment	5,252	4,903	6,795	16,787	12,077	10,984	11,127	6,208	6,878	7,835	7,596	7,166	
Unemployment rate	5.9	5.5	7.7	19.3	13.7	12.7	12.7	7.4	7.9	9.0	8.8	8.4	

Adjusted to the Current Population Survey (CPS 2020) to reflect place of residence

Equal Opportunity Employer/ Program available in alternative format/ reasonable accommodations: 602-771-1110, TDD 1-800-367-8939

Labor Force

Prepared in Cooperation with the U.S. Department of Labor, Bureau of Labor Statistics

Arizona Office of Economic Opportunity

2020

Navajo County

	JAN	FEB	MAR	APR	MAY	JUN	JUL	AUG	SEP	OCT	NOV	DEC	AVG
Civilian Labor Force	40,989	40,941	41,510	40,177	39,771	39,757	40,011	39,254	41,229	40,765	39,962	39,364	
Employment	37,667	37,833	37,205	34,421	35,931	34,625	34,486	36,114	37,795	36,896	36,085	35,598	

Unemployment	3,322	3,108	4,305	5,756	3,840	5,132	5,525	3,140	3,434	3,869	3,877	3,766
Unemployment rate	8.1	7.6	10.4	14.3	9.7	12.9	13.8	8.0	8.3	9.5	9.7	9.6

Adjusted to the Current Population Survey (CPS 2020) to reflect place of residence

Equal Opportunity Employer/ Program available in alternative format/ reasonable accommodations: 602-771-1110, TDD 1-800-367-8939

Labor Force

Prepared in Cooperation with the U.S. Department of Labor, Bureau of Labor Statistics

Arizona Office of Economic Opportunity

2020

Pima County(Tucson MSA)

	JAN	FEB	MAR	APR	MAY	JUN	JUL	AUG	SEP	OCT	NOV	DEC	AVG
Civilian Labor Force	504,206	507,744	500,658	497,905	502,124	496,222	500,705	476,987	499,135	498,262	498,372	497,081	
Employment	481,622	486,239	470,843	434,363	460,027	447,038	447,530	448,777	467,605	459,295	459,898	460,365	
Unemployment	22,584	21,505	29,815	63,542	42,097	49,184	53,175	28,210	31,530	38,967	38,474	36,716	
Unemployment rate	4.5	4.2	6.0	12.8	8.4	9.9	10.6	5.9	6.3	7.8	7.7	7.4	

Adjusted to the Current Population Survey (CPS 2020) to reflect place of residence

Equal Opportunity Employer/ Program available in alternative format/ reasonable accommodations: 602-771-1110, TDD 1-800-367-8939

Labor Force

Prepared in Cooperation with the U.S. Department of Labor, Bureau of Labor Statistics

Arizona Office of Economic Opportunity

2020

Pinal County

	JAN	FEB	MAR	APR	MAY	JUN	JUL	AUG	SEP	OCT	NOV	DEC	AVG
Civilian Labor Force	192,010	192,715	191,117	183,683	183,657	182,956	185,915	178,529	189,584	191,093	191,190	190,216	
Employment	182,584	183,746	178,628	161,617	168,733	164,821	166,103	167,939	177,638	176,810	177,017	176,718	
Unemployment	9,426	8,969	12,489	22,066	14,924	18,135	19,812	10,590	11,946	14,283	14,173	13,498	
Unemployment rate	4.9	4.7	6.5	12.0	8.1	9.9	10.7	5.9	6.3	7.5	7.4	7.1	

Adjusted to the Current Population Survey (CPS 2020) to reflect place of residence

Equal Opportunity Employer/ Program available in alternative format/ reasonable accommodations: 602-771-1110, TDD 1-800-367-8939

Labor Force

Prepared in Cooperation with the U.S. Department of Labor, Bureau of Labor Statistics

Arizona Office of Economic Opportunity

2020

Santa Cruz County

	JAN	FEB	MAR	APR	MAY	JUN	JUL	AUG	SEP	OCT	NOV	DEC	AVG
Civilian Labor Force	20,067	19,873	20,149	19,320	18,821	18,760	18,517	18,104	19,099	19,284	19,447	19,363	
Employment	18,466	18,442	18,038	16,248	16,788	16,215	15,509	16,226	16,964	16,816	17,133	17,258	
Unemployment	1,601	1,431	2,111	3,072	2,033	2,545	3,008	1,878	2,135	2,468	2,314	2,105	
Unemployment rate	8.0	7.2	10.5	15.9	10.8	13.6	16.2	10.4	11.2	12.8	11.9	10.9	

Adjusted to the Current Population Survey (CPS 2020) to reflect place of residence

Equal Opportunity Employer/ Program available in alternative format/ reasonable accommodations: 602-771-1110, TDD 1-800-367-8939

Labor Force

Prepared in Cooperation with the U.S. Department of Labor, Bureau of Labor Statistics

Arizona Office of Economic Opportunity

2020

Yavapai County(Prescott MSA)

	JAN	FEB	MAR	APR	MAY	JUN	JUL	AUG	SEP	OCT	NOV	DEC	AVG
Civilian Labor Force	107,379	108,048	106,535	109,749	109,444	108,470	109,601	105,732	109,981	110,001	108,841	107,694	
Employment	102,552	103,465	100,271	94,226	100,165	98,460	99,063	100,062	103,834	102,529	101,470	100,692	
Unemployment	4,827	4,583	6,264	15,523	9,279	10,010	10,538	5,670	6,147	7,472	7,371	7,002	
Unemployment rate	4.5	4.2	5.9	14.1	8.5	9.2	9.6	5.4	5.6	6.8	6.8	6.5	

Adjusted to the Current Population Survey (CPS 2020) to reflect place of residence

Equal Opportunity Employer/ Program available in alternative format/ reasonable accommodations: 602-771-1110, TDD 1-800-367-8939

Labor Force

Prepared in Cooperation with the U.S. Department of Labor, Bureau of Labor Statistics

Arizona Office of Economic Opportunity

2020

Yuma County(Yuma MSA)

	JAN	FEB	MAR	APR	MAY	JUN	JUL	AUG	SEP	OCT	NOV	DEC	AVG
Civilian Labor Force	100,806	98,881	103,472	96,910	92,032	92,547	97,783	90,264	97,429	96,981	96,947	92,162	
Employment	87,020	87,010	86,192	73,904	75,299	72,198	73,194	75,416	81,170	81,906	83,123	80,701	
Unemployment	13,786	11,871	17,280	23,006	16,733	20,349	24,589	14,848	16,259	15,075	13,824	11,461	
Unemployment rate	13.7	12.0	16.7	23.7	18.2	22.0	25.1	16.4	16.7	15.5	14.3	12.4	

Adjusted to the Current Population Survey (CPS 2020) to reflect place of residence

Equal Opportunity Employer/ Program available in alternative format/ reasonable accommodations: 602-771-1110, TDD 1-800-367-8939

Nonfarm Employment

Prepared in Cooperation with the U.S. Department of Labor, Bureau of Labor Statistics

Arizona Office of Economic Opportunity

2021

Apache County

[illegible]

Benchmark year 2020, quarter 1, rev. 3/16/2021

Equal Opportunity Employer/ Program available in alternative format/ reasonable accomodations: 602-771-1110, TDD 1-800-367-8939

Nonfarm Employment

Prepared in Cooperation with the U.S. Department of Labor, Bureau of Labor Statistics

Arizona Office of Economic Opportunity

2021

Cochise County(Sierra-Vista Douglas MSA)

[illegible]

Other Services	700	700
Government	10,500	10,600
Federal Government	4,800	4,800
State and Local Government	5,700	5,800

Benchmark year 2020, quarter 1, rev. 3/16/2021
 Equal Opportunity Employer/ Program available in alternative format/ reasonable accomodations: 602-771-1110, TDD 1-800-367-8939
 Nonfarm Employment
 Prepared in Cooperation with the U.S. Department of Labor, Bureau of Labor Statistics
 Arizona Office of Economic Opportunity

2021
 Coconino County(Flagstaff MSA)

	JAN	FEB	MAR	APR	MAY	JUN	JUL	AUG	SEP	OCT	NOV	DEC	AVG
Total Nonfarm	61,700	62,000											
Total Private	43,200	43,700											
Goods Producing	6,400	6,400											
Mining and Construction	2,600	2,600											
Manufacturing	3,800	3,800											
Service-Providing	55,300	55,600											
Private Service-Providing	36,800	37,300											
Trade, Transportation, and Utilities	8,700	8,700											
Information	400	400											
Financial Activities	1,400	1,400											
Professional and Business Services	2,900	2,700											
Educational and Health Services	9,100	9,200											
Leisure and Hospitality	12,600	13,200											
Other Services	1,700	1,700											
Government	18,500	18,300											
Federal Government	2,400	2,400											
State and Local Government	16,100	15,900											

Benchmark year 2020, quarter 1, rev. 3/16/2021
 Equal Opportunity Employer/ Program available in alternative format/ reasonable accomodations: 602-771-1110, TDD 1-800-367-8939
 Nonfarm Employment
 Prepared in Cooperation with the U.S. Department of Labor, Bureau of Labor Statistics
 Arizona Office of Economic Opportunity

2021
 Gila County

	JAN	FEB	MAR	APR	MAY	JUN	JUL	AUG	SEP	OCT	NOV	DEC	AVG
Total Nonfarm	14,025	14,075											
Total Private	8,950	8,950											
Goods Producing	2,725	2,700											
Service-Providing	11,300	11,375											
Private Service-Providing	6,225	6,250											
Trade, Transportation, and Utilities	2,250	2,225											
Other Private Service-Providing	3,975	4,025											
Government	5,075	5,125											
Federal Government	250	250											
State and Local Government	4,825	4,875											

Benchmark year 2020, quarter 1, rev. 3/16/2021

Equal Opportunity Employer/ Program available in alternative format/ reasonable accommodations: 602-771-1110, TDD 1-800-367-8939

Nonfarm Employment

Prepared in Cooperation with the U.S. Department of Labor, Bureau of Labor Statistics

Arizona Office of Economic Opportunity

2021

Graham County

	JAN	FEB	MAR	APR	MAY	JUN	JUL	AUG	SEP	OCT	NOV	DEC	AVG
Total Nonfarm	9,525	9,925											
Total Private	6,875	6,975											
Goods Producing	2,000	2,050											
Service-Providing	7,525	7,875											
Private Service-Providing	4,875	4,925											
Trade, Transportation, and Utilities	1,950	1,950											
Other Private Service-Providing	2,925	2,975											
Government	2,650	2,950											
Federal Government	400	400											
State and Local Government	2,250	2,550											

Benchmark year 2020, quarter 1, rev. 3/16/2021

Equal Opportunity Employer/ Program available in alternative format/ reasonable accommodations: 602-771-1110, TDD 1-800-367-8939

Nonfarm Employment

Prepared in Cooperation with the U.S. Department of Labor, Bureau of Labor Statistics

Arizona Office of Economic Opportunity

2021

Greenlee County

	JAN	FEB	MAR	APR	MAY	JUN	JUL	AUG	SEP	OCT	NOV	DEC	AVG
Total Nonfarm	4,950	4,975											
Total Private	4,375	4,400											
Goods Producing	3,525	3,550											
Service-Providing	1,425	1,425											
Private Service-Providing	850	850											
Trade, Transportation, and Utilities	500	500											
Other Private Service-Providing	350	350											
Government	575	575											
Federal Government	50	50											
State and Local Government	525	525											

Benchmark year 2020, quarter 1, rev. 3/16/2021

Equal Opportunity Employer/ Program available in alternative format/ reasonable accommodations: 602-771-1110, TDD 1-800-367-8939

Nonfarm Employment

Prepared in Cooperation with the U.S. Department of Labor, Bureau of Labor Statistics

Arizona Office of Economic Opportunity

2021

La Paz County

	JAN	FEB	MAR	APR	MAY	JUN	JUL	AUG	SEP	OCT	NOV	DEC	AVG
Total Nonfarm	5,250	5,325											
Total Private	3,225	3,300											
Goods Producing	200	200											
Service-Providing	5,050	5,125											
Private Service-Providing	3,025	3,100											
Trade, Transportation, and Utilities	1,675	1,675											
Other Private Service-Providing	1,350	1,425											
Government	2,025	2,025											
Federal Government	375	375											
State and Local Government	1,650	1,650											

Benchmark year 2020, quarter 1, rev. 3/16/2021

Equal Opportunity Employer/ Program available in alternative format/ reasonable accommodations: 602-771-1110, TDD 1-800-367-8939

Nonfarm Employment

Prepared in Cooperation with the U.S. Department of Labor, Bureau of Labor Statistics

Arizona Office of Economic Opportunity

2021

Maricopa County

[illegible]

Benchmark year 2020, quarter 1, rev. 3/16/2021

Equal Opportunity Employer/ Program available in alternative format/ reasonable accomodations: 602-771-1110, TDD 1-800-367-8939

Nonfarm Employment

Prepared in Cooperation with the U.S. Department of Labor, Bureau of Labor Statistics

Arizona Office of Economic Opportunity

2021

Mohave County(Lake Havasu City-Kingman MSA)

[illegible]

Other Services	1,900	1,900
Government	7,900	7,900
Federal Government	500	500
State and Local Government	7,400	7,400

Benchmark year 2020, quarter 1, rev. 3/16/2021
 Equal Opportunity Employer/ Program available in alternative format/ reasonable accomodations: 602-771-1110, TDD 1-800-367-8939
 Nonfarm Employment
 Prepared in Cooperation with the U.S. Department of Labor, Bureau of Labor Statistics
 Arizona Office of Economic Opportunity

2021
 Navajo County

	JAN	FEB	MAR	APR	MAY	JUN	JUL	AUG	SEP	OCT	NOV	DEC	AVG
Total Nonfarm	25,325	25,350											
Total Private	15,900	15,875											
Goods Producing	1,475	1,475											
Mining and Construction	1,150	1,175											
Manufacturing	325	300											
Service-Providing	23,850	23,875											
Private Service-Providing	14,425	14,400											
Trade, Transportation, and Utilities	4,700	4,625											
Information	200	175											
Financial Activities	575	575											
Professional and Business Services	1,225	1,250											
Educational and Health Services	4,400	4,425											
Leisure and Hospitality	2,875	2,900											
Other Services	450	450											
Government	9,425	9,475											
Federal Government	1,950	1,975											
State and Local Government	7,475	7,500											

Benchmark year 2020, quarter 1, rev. 3/16/2021
 Equal Opportunity Employer/ Program available in alternative format/ reasonable accomodations: 602-771-1110, TDD 1-800-367-8939
 Nonfarm Employment
 Prepared in Cooperation with the U.S. Department of Labor, Bureau of Labor Statistics
 Arizona Office of Economic Opportunity

2021
 Pima County(Tucson MSA)

[illegible]

Other Services	1,400	1,400
Government	18,975	19,225
Federal Government	1,625	1,625
State and Local Government	17,350	17,600

Benchmark year 2020, quarter 1, rev. 3/16/2021

Equal Opportunity Employer/ Program available in alternative format/ reasonable accomodations: 602-771-1110, TDD 1-800-367-8939

Nonfarm Employment

Prepared in Cooperation with the U.S. Department of Labor, Bureau of Labor Statistics

Arizona Office of Economic Opportunity

2021

Santa Cruz County

[illegible]

Benchmark year 2020, quarter 1, rev. 3/16/2021

Equal Opportunity Employer/ Program available in alternative format/ reasonable accomodations: 602-771-1110, TDD 1-800-367-8939

Nonfarm Employment

Prepared in Cooperation with the U.S. Department of Labor, Bureau of Labor Statistics

Arizona Office of Economic Opportunity

2021

Yavapai County(Prescott MSA)

[illegible]

Private Service-Providing	44,200	44,600
Trade, Transportation, and Utilities	13,100	13,200
Information	500	500
Financial Activities	2,200	2,200
Professional and Business Services	4,800	4,900
Educational and Health Services	12,000	12,300
Leisure and Hospitality	9,300	9,200
Other Services	2,300	2,300
Government	10,200	10,500
Federal Government	1,500	1,600
State and Local Government	8,700	8,900

Benchmark year 2020, quarter 1, rev. 3/16/2021

Equal Opportunity Employer/ Program available in alternative format/ reasonable accommodations: 602-771-1110, TDD 1-800-367-8939

Nonfarm Employment

Prepared in Cooperation with the U.S. Department of Labor, Bureau of Labor Statistics

Arizona Office of Economic Opportunity

2021

Yuma County(Yuma MSA)

	JAN	FEB	MAR	APR	MAY	JUN	JUL	AUG	SEP	OCT	NOV	DEC	AVG
Total Nonfarm	56,100	55,700											
Total Private	42,100	41,600											
Goods Producing	6,700	6,400											
Mining and Construction	3,500	3,200											
Manufacturing	3,200	3,200											
Service-Providing	49,400	49,300											
Private Service-Providing	35,400	35,200											
Trade, Transportation, and Utilities	11,000	11,100											
Information	400	300											
Financial Activities	1,900	1,900											
Professional and Business Services	6,800	6,700											
Educational and Health Services	8,000	7,900											
Leisure and Hospitality	5,500	5,500											
Other Services	1,800	1,800											
Government	14,000	14,100											
Federal Government	3,600	3,600											
State and Local Government	10,400	10,500											

Benchmark year 2020, quarter 1, rev. 3/16/2021

Equal Opportunity Employer/ Program available in alternative format/ reasonable accommodations: 602-771-1110, TDD 1-800-367-8939

Nonfarm Employment

Prepared in Cooperation with the U.S. Department of Labor, Bureau of Labor Statistics

Arizona Office of Economic Opportunity

2020

Apache County

	JAN	FEB	MAR	APR	MAY	JUN	JUL	AUG	SEP	OCT	NOV	DEC	AVG
Total Nonfarm	18,250	18,225	18,100	17,000	16,875	15,975	15,800	17,075	17,250	17,150	17,000	17,025	17,125
Total Private	7,625	7,575	7,400	6,750	6,750	6,875	6,900	7,050	7,075	7,075	6,950	6,925	7,075
Goods Producing	650	650	625	550	425	525	550	575	600	625	625	600	575
Service-Providing	17,600	17,575	17,475	16,450	16,450	15,450	15,250	16,500	16,650	16,525	16,375	16,425	16,550
Private Service-Providing	6,975	6,925	6,775	6,200	6,325	6,350	6,350	6,475	6,475	6,450	6,325	6,325	6,500
Trade, Transportation, and Utilities	1,975	1,950	1,975	1,850	1,875	1,900	1,900	1,925	1,950	1,900	1,900	1,900	1,925
Other Private Service-Providing	5,000	4,975	4,800	4,350	4,450	4,450	4,450	4,550	4,525	4,550	4,425	4,425	4,575
Government	10,625	10,650	10,700	10,250	10,125	9,100	8,900	10,025	10,175	10,075	10,050	10,100	10,050
Federal Government	2,525	2,575	2,650	2,675	2,700	2,725	2,550	2,725	2,825	2,750	2,725	2,725	2,675
State and Local Government	8,100	8,075	8,050	7,575	7,425	6,375	6,350	7,300	7,350	7,325	7,325	7,375	7,375

Benchmark year 2020, quarter 1, rev. 2/22/2021

Equal Opportunity Employer/ Program available in alternative format/ reasonable accommodations: 602-771-1110, TDD 1-800-367-8939

Nonfarm Employment

Prepared in Cooperation with the U.S. Department of Labor, Bureau of Labor Statistics

Arizona Office of Economic Opportunity

2020

Cochise County(Sierra-Vista Douglas MSA)

	JAN	FEB	MAR	APR	MAY	JUN	JUL	AUG	SEP	OCT	NOV	DEC	AVG
Total Nonfarm	34,700	35,000	35,000	32,800	33,500	33,600	33,700	34,500	34,900	35,100	35,200	35,100	34,400
Total Private	23,900	24,000	24,100	22,000	22,700	23,300	23,500	23,700	24,000	24,200	24,300	24,300	23,700
Goods Producing	3,000	3,100	3,200	3,200	3,400	3,600	3,800	3,900	3,900	4,000	4,000	4,000	3,600
Mining and Construction	2,400	2,500	2,600	2,600	2,800	3,000	3,100	3,200	3,200	3,300	3,400	3,400	3,000
Manufacturing	600	600	600	600	600	600	700	700	700	700	600	600	600
Service-Providing	31,700	31,900	31,800	29,600	30,100	30,000	29,900	30,600	31,000	31,100	31,200	31,100	30,800
Private Service-Providing	20,900	20,900	20,900	18,800	19,300	19,700	19,700	19,800	20,100	20,200	20,300	20,300	20,100
Trade, Transportation, and Utilities	6,200	6,200	6,200	5,800	6,000	6,100	6,200	6,200	6,300	6,400	6,600	6,700	6,200
Information	400	400	300	300	300	400	400	300	300	300	300	300	300
Financial Activities	800	800	800	800	800	800	800	800	800	800	800	800	800
Professional and Business Services	4,600	4,500	4,600	4,500	4,400	4,300	4,500	4,400	4,500	4,600	4,500	4,500	4,500
Educational and Health Services	4,600	4,700	4,700	4,300	4,300	4,300	4,200	4,400	4,400	4,400	4,400	4,300	4,400
Leisure and Hospitality	3,600	3,600	3,600	2,500	2,800	3,100	2,900	3,000	3,100	3,000	3,000	3,000	3,100
Other Services	700	700	700	600	700	700	700	700	700	700	700	700	700
Government	10,800	11,000	10,900	10,800	10,800	10,300	10,200	10,800	10,900	10,900	10,900	10,800	10,800
Federal Government	4,800	4,800	4,800	4,900	4,900	4,900	4,900	5,000	5,000	4,900	4,800	4,800	4,900
State and Local Government	6,000	6,200	6,100	5,900	5,900	5,400	5,300	5,800	5,900	6,000	6,100	6,000	5,900

Benchmark year 2020, quarter 1, rev. 2/22/2021

Equal Opportunity Employer/ Program available in alternative format/ reasonable accommodations: 602-771-1110, TDD 1-800-367-8939

Nonfarm Employment

Prepared in Cooperation with the U.S. Department of Labor, Bureau of Labor Statistics

Arizona Office of Economic Opportunity

2020

Coconino County(Flagstaff MSA)

	JAN	FEB	MAR	APR	MAY	JUN	JUL	AUG	SEP	OCT	NOV	DEC	AVG
Total Nonfarm	67,300	67,400	67,400	56,600	58,000	60,500	60,300	62,500	63,300	64,100	63,900	63,000	62,900
Total Private	47,300	47,100	47,300	36,800	39,500	42,100	42,700	43,300	43,800	44,800	45,000	44,700	43,700
Goods Producing	6,400	6,400	6,400	6,200	6,400	6,600	6,400	6,500	6,500	6,600	6,500	6,600	6,500
Mining and Construction	2,500	2,500	2,500	2,400	2,600	2,700	2,600	2,700	2,700	2,800	2,700	2,700	2,600
Manufacturing	3,900	3,900	3,900	3,800	3,800	3,900	3,800	3,800	3,800	3,800	3,800	3,900	3,800
Service-Providing	60,900	61,000	61,000	50,400	51,600	53,900	53,900	56,000	56,800	57,500	57,400	56,400	56,400
Private Service-Providing	40,900	40,700	40,900	30,600	33,100	35,500	36,300	36,800	37,300	38,200	38,500	38,100	37,200
Trade, Transportation, and Utilities	9,100	9,000	9,000	7,700	7,900	8,400	8,700	8,800	9,000	8,900	9,200	9,100	8,700
Information	400	400	500	300	300	300	300	300	400	400	400	400	400
Financial Activities	1,500	1,500	1,500	1,400	1,400	1,400	1,500	1,500	1,400	1,400	1,500	1,500	1,500
Professional and Business Services	3,300	3,300	3,400	2,900	3,100	3,100	3,200	3,100	3,000	3,000	2,900	2,900	3,100
Educational and Health Services	9,700	9,700	9,700	8,900	9,100	9,000	8,900	8,900	9,000	9,100	9,200	9,100	9,200
Leisure and Hospitality	15,100	15,000	15,100	7,900	9,800	11,600	12,000	12,500	12,800	13,600	13,600	13,400	12,700
Other Services	1,800	1,800	1,700	1,500	1,500	1,700	1,700	1,700	1,700	1,800	1,700	1,700	1,700
Government	20,000	20,300	20,100	19,800	18,500	18,400	17,600	19,200	19,500	19,300	18,900	18,300	19,200
Federal Government	2,500	2,500	2,500	2,700	2,700	2,900	2,600	2,800	3,000	2,800	2,600	2,500	2,700
State and Local Government	17,500	17,800	17,600	17,100	15,800	15,500	15,000	16,400	16,500	16,500	16,300	15,800	16,500

Benchmark year 2020, quarter 1, rev. 2/22/2021

Equal Opportunity Employer/ Program available in alternative format/ reasonable accommodations: 602-771-1110, TDD 1-800-367-8939

Nonfarm Employment

Prepared in Cooperation with the U.S. Department of Labor, Bureau of Labor Statistics

Arizona Office of Economic Opportunity

2020

Gila County

	JAN	FEB	MAR	APR	MAY	JUN	JUL	AUG	SEP	OCT	NOV	DEC	AVG
Total Nonfarm	14,475	14,450	14,300	13,700	14,200	14,100	13,850	14,450	14,375	14,300	14,225	14,200	14,225
Total Private	9,025	8,975	8,950	8,325	8,925	9,125	9,025	9,225	9,150	9,175	9,050	9,050	9,000
Goods Producing	2,600	2,500	2,525	2,550	2,675	2,600	2,700	2,775	2,750	2,775	2,700	2,725	2,650
Service-Providing	11,875	11,950	11,775	11,150	11,525	11,500	11,150	11,675	11,625	11,525	11,525	11,475	11,575
Private Service-Providing	6,425	6,475	6,425	5,775	6,250	6,525	6,325	6,450	6,400	6,400	6,350	6,325	6,350
Trade, Transportation, and Utilities	2,150	2,125	2,175	2,150	2,250	2,325	2,250	2,300	2,275	2,300	2,300	2,325	2,250
Other Private Service-Providing	4,275	4,350	4,250	3,625	4,000	4,200	4,075	4,150	4,125	4,100	4,050	4,000	4,100
Government	5,450	5,475	5,350	5,375	5,275	4,975	4,825	5,225	5,225	5,125	5,175	5,150	5,225
Federal Government	250	250	275	350	325	325	300	350	350	275	275	250	300
State and Local Government	5,200	5,225	5,075	5,025	4,950	4,650	4,525	4,875	4,875	4,850	4,900	4,900	4,925

Benchmark year 2020, quarter 1, rev. 2/22/2021

Equal Opportunity Employer/ Program available in alternative format/ reasonable accommodations: 602-771-1110, TDD 1-800-367-8939

Nonfarm Employment

Prepared in Cooperation with the U.S. Department of Labor, Bureau of Labor Statistics

Arizona Office of Economic Opportunity

2020

Graham County

	JAN	FEB	MAR	APR	MAY	JUN	JUL	AUG	SEP	OCT	NOV	DEC	AVG
Total Nonfarm	9,450	9,725	9,725	9,150	9,250	9,025	8,650	9,275	9,675	9,750	9,800	9,850	9,425
Total Private	6,675	6,700	6,675	6,250	6,475	6,625	6,625	6,650	6,675	6,750	6,800	6,875	6,650
Goods Producing	1,925	1,950	1,950	1,875	1,850	1,875	1,875	1,875	1,850	1,900	1,900	1,950	1,900
Service-Providing	7,525	7,775	7,775	7,275	7,400	7,150	6,775	7,400	7,825	7,850	7,900	7,900	7,525
Private Service-Providing	4,750	4,750	4,725	4,375	4,625	4,750	4,750	4,775	4,825	4,850	4,900	4,925	4,750
Trade, Transportation, and Utilities	1,825	1,800	1,825	1,825	1,875	1,900	1,900	1,950	1,925	1,950	2,000	2,000	1,900
Other Private Service-Providing	2,925	2,950	2,900	2,550	2,750	2,850	2,850	2,825	2,900	2,900	2,900	2,925	2,850
Government	2,775	3,025	3,050	2,900	2,775	2,400	2,025	2,625	3,000	3,000	3,000	2,975	2,775
Federal Government	400	375	400	400	400	425	425	425	425	425	400	425	400
State and Local Government	2,375	2,650	2,650	2,500	2,375	1,975	1,600	2,200	2,575	2,575	2,600	2,550	2,375

Benchmark year 2020, quarter 1, rev. 2/22/2021

Equal Opportunity Employer/ Program available in alternative format/ reasonable accommodations: 602-771-1110, TDD 1-800-367-8939

Nonfarm Employment

Prepared in Cooperation with the U.S. Department of Labor, Bureau of Labor Statistics

Arizona Office of Economic Opportunity

2020

Greenlee County

	JAN	FEB	MAR	APR	MAY	JUN	JUL	AUG	SEP	OCT	NOV	DEC	AVG
Total Nonfarm	5,200	5,225	5,275	5,150	5,075	4,900	4,725	4,850	4,875	4,950	4,900	4,825	5,000
Total Private	4,650	4,650	4,700	4,600	4,550	4,425	4,375	4,325	4,300	4,350	4,325	4,250	4,450
Goods Producing	3,750	3,750	3,825	3,800	3,725	3,625	3,550	3,525	3,500	3,550	3,500	3,425	3,625
Service-Providing	1,450	1,475	1,450	1,350	1,350	1,275	1,175	1,325	1,375	1,400	1,400	1,400	1,375
Private Service-Providing	900	900	875	800	825	800	825	800	800	800	825	825	825
Trade, Transportation, and Utilities	500	500	525	500	500	475	500	475	475	475	475	500	500
Other Private Service-Providing	400	400	350	300	325	325	325	325	325	325	350	325	325
Government	550	575	575	550	525	475	350	525	575	600	575	575	550
Federal Government	25	25	25	25	25	25	25	50	50	50	50	50	50
State and Local Government	525	550	550	525	500	450	325	475	525	550	525	525	500

Benchmark year 2020, quarter 1, rev. 2/22/2021

Equal Opportunity Employer/ Program available in alternative format/ reasonable accommodations: 602-771-1110, TDD 1-800-367-8939

Nonfarm Employment

Prepared in Cooperation with the U.S. Department of Labor, Bureau of Labor Statistics

Arizona Office of Economic Opportunity

2020

La Paz County

	JAN	FEB	MAR	APR	MAY	JUN	JUL	AUG	SEP	OCT	NOV	DEC	AVG
Total Nonfarm	5,675	5,725	5,775	5,225	5,375	5,225	5,050	5,100	5,175	5,200	5,200	5,225	5,325
Total Private	3,325	3,400	3,450	2,975	3,125	3,175	3,125	3,150	3,175	3,200	3,175	3,200	3,200
Goods Producing	200	175	200	225	200	200	175	200	200	200	200	200	200
Service-Providing	5,475	5,550	5,575	5,000	5,175	5,025	4,875	4,900	4,975	5,000	5,000	5,025	5,125
Private Service-Providing	3,125	3,225	3,250	2,750	2,925	2,975	2,950	2,950	2,975	3,000	2,975	3,000	3,000
Trade, Transportation, and Utilities	1,625	1,625	1,650	1,575	1,600	1,600	1,600	1,625	1,625	1,650	1,650	1,675	1,625
Other Private Service-Providing	1,500	1,600	1,600	1,175	1,325	1,375	1,350	1,325	1,350	1,350	1,325	1,325	1,375
Government	2,350	2,325	2,325	2,250	2,250	2,050	1,925	1,950	2,000	2,000	2,025	2,025	2,125
Federal Government	350	350	375	375	375	375	350	375	375	375	375	375	375
State and Local Government	2,000	1,975	1,950	1,875	1,875	1,675	1,575	1,575	1,625	1,625	1,650	1,650	1,750

Benchmark year 2020, quarter 1, rev. 2/22/2021

Equal Opportunity Employer/ Program available in alternative format/ reasonable accommodations: 602-771-1110, TDD 1-800-367-8939

Nonfarm Employment

Prepared in Cooperation with the U.S. Department of Labor, Bureau of Labor Statistics

Arizona Office of Economic Opportunity

2020

Maricopa County

	JAN	FEB	MAR	APR	MAY	JUN	JUL	AUG	SEP	OCT	NOV	DEC	AVG
Total Nonfarm	2,152,400	2,165,700	2,141,800	1,919,300	1,966,700	1,961,000	1,940,400	2,010,800	2,031,900	2,064,800	2,087,700	2,094,100	2,044,700
Total Private	1,924,400	1,930,700	1,909,300	1,690,100	1,743,100	1,781,300	1,767,100	1,791,100	1,806,600	1,839,500	1,862,000	1,870,700	1,826,300
Goods Producing	267,400	269,300	268,500	260,400	261,600	263,000	260,800	261,800	261,600	263,000	266,200	263,100	263,900
Mining and Construction	135,800	137,300	136,500	133,500	134,100	134,600	133,200	133,400	133,400	135,100	137,100	133,100	134,800
Manufacturing	131,600	132,000	132,000	126,900	127,500	128,400	127,600	128,400	128,200	127,900	129,100	130,000	129,100
Service-Providing	1,885,000	1,896,400	1,873,300	1,658,900	1,705,100	1,698,000	1,679,600	1,749,000	1,770,300	1,801,800	1,821,500	1,831,000	1,780,800
Private Service-Providing	1,657,000	1,661,400	1,640,800	1,429,700	1,481,500	1,518,300	1,506,300	1,529,300	1,545,000	1,576,500	1,595,800	1,607,600	1,562,400
Trade, Transportation, and Utilities	406,900	404,300	403,600	368,300	377,000	390,900	392,400	399,700	403,100	409,000	422,800	427,500	400,500
Information	40,600	40,500	40,100	36,100	35,700	35,300	35,700	36,000	36,700	36,600	36,100	36,300	37,100
Financial Activities	203,500	204,400	203,900	200,400	200,700	201,300	202,100	202,400	202,700	204,700	204,500	204,400	202,900
Professional and Business Services	365,500	365,800	362,600	336,100	343,100	343,500	338,400	344,400	343,300	353,600	356,400	358,500	350,900
Educational and Health Services	343,900	344,400	342,300	308,900	316,400	317,500	318,200	325,700	329,300	334,300	334,900	337,800	329,500
Leisure and Hospitality	229,900	234,900	230,400	136,700	160,100	178,500	166,100	167,000	175,300	183,900	186,400	187,900	186,400
Other Services	66,700	67,100	57,900	43,200	48,500	51,300	53,400	54,100	54,600	54,400	54,700	55,200	55,100
Government	228,000	235,000	232,500	229,200	223,600	179,700	173,300	219,700	225,300	225,300	225,700	223,400	218,400
Federal Government	22,400	22,500	22,700	22,800	22,800	22,800	23,200	25,500	25,200	23,500	22,300	22,300	23,200
State and Local Government	205,600	212,500	209,800	206,400	200,800	156,900	150,100	194,200	200,100	201,800	203,400	201,100	195,200

Benchmark year 2020, quarter 1, rev. 2/22/2021

Equal Opportunity Employer/ Program available in alternative format/ reasonable accommodations: 602-771-1110, TDD 1-800-367-8939

Nonfarm Employment

Prepared in Cooperation with the U.S. Department of Labor, Bureau of Labor Statistics

Arizona Office of Economic Opportunity

2020

Mohave County(Lake Havasu City-Kingman MSA)

	JAN	FEB	MAR	APR	MAY	JUN	JUL	AUG	SEP	OCT	NOV	DEC	AVG
Total Nonfarm	52,500	52,800	52,400	47,100	49,600	50,200	50,200	51,000	51,500	52,300	52,400	52,100	51,200
Total Private	44,300	44,300	44,300	38,900	41,600	42,600	42,700	42,900	43,300	44,300	44,300	44,200	43,100
Goods Producing	6,700	6,600	6,700	6,400	6,500	6,600	6,700	6,800	6,700	6,900	6,900	7,000	6,700
Mining and Construction	3,600	3,500	3,500	3,400	3,500	3,600	3,800	3,800	3,800	3,900	3,900	4,000	3,700
Manufacturing	3,100	3,100	3,200	3,000	3,000	3,000	2,900	3,000	2,900	3,000	3,000	3,000	3,000
Service-Providing	45,800	46,200	45,700	40,700	43,100	43,600	43,500	44,200	44,800	45,400	45,500	45,100	44,500
Private Service-Providing	37,600	37,700	37,600	32,500	35,100	36,000	36,000	36,100	36,600	37,400	37,400	37,200	36,400
Trade, Transportation, and Utilities	12,700	12,700	12,700	11,800	12,200	12,600	12,700	12,800	12,800	13,100	13,200	13,200	12,700
Information	500	500	500	400	400	400	500	400	500	500	500	500	500
Financial Activities	1,800	1,900	1,900	1,800	1,900	1,900	1,900	1,900	1,900	1,900	1,900	2,000	1,900
Professional and Business Services	4,300	4,200	4,200	3,600	3,800	4,000	3,700	3,700	3,700	3,700	3,700	3,600	3,900
Educational and Health Services	9,200	9,200	9,100	8,400	8,800	8,600	8,600	8,900	9,000	9,000	9,000	8,900	8,900
Leisure and Hospitality	7,200	7,300	7,300	4,900	6,300	6,700	6,800	6,600	6,900	7,300	7,200	7,200	6,800
Other Services	1,900	1,900	1,900	1,600	1,700	1,800	1,800	1,800	1,800	1,900	1,900	1,800	1,800
Government	8,200	8,500	8,100	8,200	8,000	7,600	7,500	8,100	8,200	8,000	8,100	7,900	8,000
Federal Government	500	500	500	500	500	500	500	800	700	500	500	500	500
State and Local Government	7,700	8,000	7,600	7,700	7,500	7,100	7,000	7,300	7,500	7,500	7,600	7,400	7,500

Benchmark year 2020, quarter 1, rev. 2/22/2021

Equal Opportunity Employer/ Program available in alternative format/ reasonable accommodations: 602-771-1110, TDD 1-800-367-8939

Nonfarm Employment

Prepared in Cooperation with the U.S. Department of Labor, Bureau of Labor Statistics

Arizona Office of Economic Opportunity

2020

Navajo County

	JAN	FEB	MAR	APR	MAY	JUN	JUL	AUG	SEP	OCT	NOV	DEC	AVG
Total Nonfarm	26,350	26,425	26,300	24,600	25,475	24,825	24,725	26,375	26,725	26,525	26,150	25,950	25,875
Total Private	16,700	16,700	16,475	15,225	16,125	16,550	16,925	17,100	17,050	16,875	16,500	16,350	16,550
Goods Producing	1,525	1,500	1,450	1,475	1,575	1,600	1,600	1,600	1,625	1,600	1,550	1,525	1,550
Mining and Construction	1,225	1,225	1,175	1,175	1,275	1,300	1,300	1,275	1,300	1,275	1,225	1,200	1,250
Manufacturing	300	275	275	300	300	300	300	325	325	325	325	325	300
Service-Providing	24,825	24,925	24,850	23,125	23,900	23,225	23,125	24,775	25,100	24,925	24,600	24,425	24,325
Private Service-Providing	15,175	15,200	15,025	13,750	14,550	14,950	15,325	15,500	15,425	15,275	14,950	14,825	15,000
Trade, Transportation, and Utilities	4,475	4,400	4,475	4,450	4,650	4,850	5,025	5,050	4,975	4,900	4,925	4,900	4,750
Information	275	250	250	250	225	225	225	200	225	200	200	200	225
Financial Activities	575	575	550	500	500	500	550	550	550	575	575	575	550
Professional and Business Services	1,225	1,225	1,225	1,175	1,225	1,250	1,275	1,275	1,275	1,275	1,250	1,225	1,250
Educational and Health Services	4,575	4,625	4,575	4,400	4,375	4,175	4,300	4,500	4,450	4,475	4,500	4,500	4,450
Leisure and Hospitality	3,500	3,600	3,500	2,575	3,150	3,500	3,475	3,450	3,475	3,400	3,050	2,975	3,300
Other Services	550	525	450	400	425	450	475	475	475	450	450	450	475
Government	9,650	9,725	9,825	9,375	9,350	8,275	7,800	9,275	9,675	9,650	9,650	9,600	9,325
Federal Government	1,800	1,825	1,900	1,975	2,025	2,075	1,925	2,025	2,150	2,075	2,050	2,050	2,000
State and Local Government	7,850	7,900	7,925	7,400	7,325	6,200	5,875	7,250	7,525	7,575	7,600	7,550	7,325

Benchmark year 2020, quarter 1, rev. 2/22/2021

Equal Opportunity Employer/ Program available in alternative format/ reasonable accommodations: 602-771-1110, TDD 1-800-367-8939

Nonfarm Employment

Prepared in Cooperation with the U.S. Department of Labor, Bureau of Labor Statistics

Arizona Office of Economic Opportunity

2020

Pima County(Tucson MSA)

	JAN	FEB	MAR	APR	MAY	JUN	JUL	AUG	SEP	OCT	NOV	DEC	AVG
Total Nonfarm	391,500	397,500	394,400	353,200	361,700	359,600	354,000	365,100	369,100	373,500	378,400	378,600	373,100
Total Private	314,000	316,000	313,500	274,400	284,000	292,300	286,600	290,200	293,000	298,000	302,800	303,500	297,400
Goods Producing	47,700	47,700	47,500	46,000	46,800	47,200	46,700	47,000	46,800	47,400	47,300	47,500	47,100
Mining and Construction	20,000	20,000	19,900	19,100	19,700	19,800	19,500	19,700	19,700	20,200	20,300	20,400	19,900
Manufacturing	27,700	27,700	27,600	26,900	27,100	27,400	27,200	27,300	27,100	27,200	27,000	27,100	27,300
Service-Providing	343,800	349,800	346,900	307,200	314,900	312,400	307,300	318,100	322,300	326,100	331,100	331,100	325,900
Private Service-Providing	266,300	268,300	266,000	228,400	237,200	245,100	239,900	243,200	246,200	250,600	255,500	256,000	250,200
Trade, Transportation, and Utilities	63,800	63,200	63,100	57,900	59,600	62,200	62,700	63,800	64,900	66,800	69,500	70,100	64,000
Information	5,800	6,100	5,700	4,900	5,200	4,800	4,700	4,700	4,900	4,900	5,000	5,000	5,100
Financial Activities	17,500	17,600	17,600	17,200	17,200	17,400	17,500	17,400	17,300	17,200	17,800	17,700	17,500
Professional and Business Services	50,800	51,100	50,700	46,800	47,200	47,700	46,000	46,500	46,500	47,100	46,200	46,300	47,700
Educational and Health Services	69,700	70,500	70,200	64,300	65,200	66,000	65,100	66,200	66,500	67,400	68,300	68,800	67,400
Leisure and Hospitality	44,600	45,600	44,500	26,500	30,800	34,400	31,500	32,000	33,500	34,500	35,900	35,300	35,800
Other Services	14,100	14,200	14,200	10,800	12,000	12,600	12,400	12,600	12,600	12,700	12,800	12,800	12,800
Government	77,500	81,500	80,900	78,800	77,700	67,300	67,400	74,900	76,100	75,500	75,600	75,100	75,700
Federal Government	13,000	13,000	13,100	13,000	13,000	13,100	13,100	13,600	13,600	13,300	13,000	13,100	13,200
State and Local Government	64,500	68,500	67,800	65,800	64,700	54,200	54,300	61,300	62,500	62,200	62,600	62,000	62,500

Benchmark year 2020, quarter 1, rev. 2/22/2021

Equal Opportunity Employer/ Program available in alternative format/ reasonable accommodations: 602-771-1110, TDD 1-800-367-8939

Nonfarm Employment

Prepared in Cooperation with the U.S. Department of Labor, Bureau of Labor Statistics

Arizona Office of Economic Opportunity

2020

Pinal County

	JAN	FEB	MAR	APR	MAY	JUN	JUL	AUG	SEP	OCT	NOV	DEC	AVG
Total Nonfarm	63,725	64,475	64,150	59,500	60,550	58,275	56,675	60,650	61,000	61,425	62,225	62,325	61,225
Total Private	43,825	44,300	44,100	39,650	40,900	41,050	40,400	41,500	41,625	42,100	42,850	43,000	42,075
Goods Producing	7,425	7,275	7,300	7,200	7,375	7,150	6,750	7,100	7,200	7,225	7,175	7,175	7,200
Mining and Construction	3,425	3,300	3,325	3,300	3,425	3,325	3,275	3,300	3,325	3,350	3,275	3,275	3,325
Manufacturing	4,000	3,975	3,975	3,900	3,950	3,825	3,475	3,800	3,875	3,875	3,900	3,900	3,875
Service-Providing	56,300	57,200	56,850	52,300	53,175	51,125	49,925	53,550	53,800	54,200	55,050	55,150	54,025
Private Service-Providing	36,400	37,025	36,800	32,450	33,525	33,900	33,650	34,400	34,425	34,875	35,675	35,825	34,875
Trade, Transportation, and Utilities	11,925	12,000	12,100	11,600	12,000	12,325	12,400	12,725	12,575	12,800	13,200	13,275	12,400
Information	600	575	575	500	500	425	375	375	425	400	425	425	475
Financial Activities	1,525	1,550	1,550	1,425	1,450	1,425	1,425	1,400	1,425	1,450	1,475	1,475	1,450
Professional and Business Services	6,825	6,800	6,700	6,500	6,450	6,400	6,375	6,325	6,325	6,400	6,400	6,350	6,475
Educational and Health Services	6,900	6,950	6,900	6,400	6,500	6,175	6,000	6,475	6,550	6,525	6,650	6,675	6,550
Leisure and Hospitality	6,900	7,400	7,450	4,725	5,275	5,725	5,700	5,725	5,750	5,900	6,125	6,200	6,075
Other Services	1,725	1,750	1,525	1,300	1,350	1,425	1,375	1,375	1,375	1,400	1,400	1,425	1,450
Government	19,900	20,175	20,050	19,850	19,650	17,225	16,275	19,150	19,375	19,325	19,375	19,325	19,150
Federal Government	1,450	1,425	1,450	1,475	1,475	1,475	1,500	1,625	1,700	1,675	1,650	1,650	1,550
State and Local Government	18,450	18,750	18,600	18,375	18,175	15,750	14,775	17,525	17,675	17,650	17,725	17,675	17,600

Benchmark year 2020, quarter 1, rev. 2/22/2021

Equal Opportunity Employer/ Program available in alternative format/ reasonable accommodations: 602-771-1110, TDD 1-800-367-8939

Nonfarm Employment

Prepared in Cooperation with the U.S. Department of Labor, Bureau of Labor Statistics

Arizona Office of Economic Opportunity

2020

Santa Cruz County

	JAN	FEB	MAR	APR	MAY	JUN	JUL	AUG	SEP	OCT	NOV	DEC	AVG
Total Nonfarm	13,675	13,725	13,600	12,125	12,650	12,275	11,350	11,875	11,925	12,250	12,700	12,900	12,600
Total Private	9,875	9,900	9,800	8,350	8,825	8,975	8,175	8,050	8,075	8,350	8,800	9,000	8,850
Goods Producing	600	575	575	525	625	650	650	625	575	575	575	575	600
Service-Providing	13,075	13,150	13,025	11,600	12,025	11,625	10,700	11,250	11,350	11,675	12,125	12,325	12,000
Private Service-Providing	9,275	9,325	9,225	7,825	8,200	8,325	7,525	7,425	7,500	7,775	8,225	8,425	8,250
Trade, Transportation, and Utilities	5,950	5,975	5,950	5,450	5,500	5,600	4,950	4,775	4,775	4,975	5,375	5,550	5,400
Other Private Service-Providing	3,325	3,350	3,275	2,375	2,700	2,725	2,575	2,650	2,725	2,800	2,850	2,875	2,850
Government	3,800	3,825	3,800	3,775	3,825	3,300	3,175	3,825	3,850	3,900	3,900	3,900	3,750
Federal Government	1,750	1,750	1,750	1,775	1,800	1,800	1,825	1,850	1,875	1,875	1,875	1,875	1,825
State and Local Government	2,050	2,075	2,050	2,000	2,025	1,500	1,350	1,975	1,975	2,025	2,025	2,025	1,925

Benchmark year 2020, quarter 1, rev. 2/22/2021

Equal Opportunity Employer/ Program available in alternative format/ reasonable accommodations: 602-771-1110, TDD 1-800-367-8939

Nonfarm Employment

Prepared in Cooperation with the U.S. Department of Labor, Bureau of Labor Statistics

Arizona Office of Economic Opportunity

2020

Yavapai County(Prescott MSA)

	JAN	FEB	MAR	APR	MAY	JUN	JUL	AUG	SEP	OCT	NOV	DEC	AVG
Total Nonfarm	66,100	66,400	66,200	58,000	61,000	62,200	61,800	63,400	64,000	64,800	64,900	64,500	63,600
Total Private	55,100	55,300	55,200	47,100	50,200	52,300	52,000	52,600	53,100	54,100	54,200	54,300	53,000
Goods Producing	10,000	10,100	10,100	9,700	10,000	10,100	10,100	10,100	10,000	10,100	10,100	10,100	10,000
Mining and Construction	6,400	6,400	6,400	6,300	6,500	6,500	6,500	6,500	6,400	6,500	6,500	6,400	6,400
Manufacturing	3,600	3,700	3,700	3,400	3,500	3,600	3,600	3,600	3,600	3,600	3,600	3,700	3,600
Service-Providing	56,100	56,300	56,100	48,300	51,000	52,100	51,700	53,300	54,000	54,700	54,800	54,400	53,600
Private Service-Providing	45,100	45,200	45,100	37,400	40,200	42,200	41,900	42,500	43,100	44,000	44,100	44,200	42,900
Trade, Transportation, and Utilities	12,700	12,700	12,700	11,400	12,000	12,500	12,500	12,700	12,600	12,900	13,100	13,300	12,600
Information	500	500	500	400	400	400	400	400	500	500	500	500	500
Financial Activities	2,200	2,200	2,300	2,200	2,200	2,200	2,200	2,200	2,200	2,200	2,200	2,200	2,200
Professional and Business Services	4,600	4,600	4,600	4,400	4,500	4,600	4,500	4,500	4,600	4,700	4,700	4,800	4,600
Educational and Health Services	12,500	12,600	12,500	11,400	11,700	11,700	11,600	11,800	12,000	12,100	12,000	12,000	12,000
Leisure and Hospitality	10,200	10,300	10,200	5,700	7,200	8,500	8,400	8,600	8,900	9,300	9,300	9,100	8,800
Other Services	2,400	2,300	2,300	1,900	2,200	2,300	2,300	2,300	2,300	2,300	2,300	2,300	2,300
Government	11,000	11,100	11,000	10,900	10,800	9,900	9,800	10,800	10,900	10,700	10,700	10,200	10,700
Federal Government	1,500	1,500	1,600	1,700	1,700	1,700	1,600	1,900	1,900	1,700	1,600	1,600	1,700
State and Local Government	9,500	9,600	9,400	9,200	9,100	8,200	8,200	8,900	9,000	9,000	9,100	8,600	9,000

Benchmark year 2020, quarter 1, rev. 2/22/2021

Equal Opportunity Employer/ Program available in alternative format/ reasonable accommodations: 602-771-1110, TDD 1-800-367-8939

Nonfarm Employment

Prepared in Cooperation with the U.S. Department of Labor, Bureau of Labor Statistics

Arizona Office of Economic Opportunity

2020

Yuma County(Yuma MSA)

	JAN	FEB	MAR	APR	MAY	JUN	JUL	AUG	SEP	OCT	NOV	DEC	AVG
Total Nonfarm	60,100	60,600	59,900	53,400	53,700	52,700	52,100	53,900	54,400	55,100	55,900	56,200	55,700
Total Private	45,200	45,600	45,000	39,200	39,500	39,700	39,300	39,900	40,300	41,000	41,700	42,100	41,500
Goods Producing	6,300	6,600	6,600	6,000	5,900	5,900	5,800	5,800	5,800	6,100	6,300	6,800	6,200
Mining and Construction	3,300	3,500	3,500	3,500	3,600	3,600	3,500	3,400	3,400	3,600	3,600	3,600	3,500
Manufacturing	3,000	3,100	3,100	2,500	2,300	2,300	2,300	2,400	2,400	2,500	2,700	3,200	2,700
Service-Providing	53,800	54,000	53,300	47,400	47,800	46,800	46,300	48,100	48,600	49,000	49,600	49,400	49,500
Private Service-Providing	38,900	39,000	38,400	33,200	33,600	33,800	33,500	34,100	34,500	34,900	35,400	35,300	35,400
Trade, Transportation, and Utilities	11,900	11,900	11,800	10,900	10,900	10,900	11,000	11,200	11,200	10,900	11,400	11,300	11,300
Information	400	400	400	300	300	300	300	300	300	300	400	400	300
Financial Activities	2,200	2,200	2,100	1,900	1,900	1,900	1,900	1,900	1,900	1,900	1,900	1,900	2,000
Professional and Business Services	7,600	7,700	7,500	6,300	6,100	6,100	6,200	6,300	6,400	6,700	6,500	6,700	6,700
Educational and Health Services	8,400	8,300	8,200	7,600	7,600	7,500	7,500	7,700	7,700	7,700	7,800	7,900	7,800
Leisure and Hospitality	6,600	6,700	6,600	4,600	5,200	5,400	5,000	5,100	5,400	5,700	5,600	5,300	5,600
Other Services	1,800	1,800	1,800	1,600	1,600	1,700	1,600	1,600	1,600	1,700	1,800	1,800	1,700
Government	14,900	15,000	14,900	14,200	14,200	13,000	12,800	14,000	14,100	14,100	14,200	14,100	14,100
Federal Government	3,700	3,700	3,700	3,700	3,700	3,700	3,700	3,800	3,800	3,700	3,700	3,700	3,700
State and Local Government	11,200	11,300	11,200	10,500	10,500	9,300	9,100	10,200	10,300	10,400	10,500	10,400	10,400

Benchmark year 2020, quarter 1, rev. 2/22/2021

Equal Opportunity Employer/ Program available in alternative format/ reasonable accommodations: 602-771-1110, TDD 1-800-367-8939

About This Publication

Arizona's Workforce is published 14 times a year by the State of Arizona Office of Economic Opportunity (OEO) — 12 times as the monthly Employment Report and twice a year as a two-year Forecast Report. OEO is the state agency responsible for labor market information and demographic data for the state of Arizona.

Material published in *Arizona's Workforce* is in the public domain and can be reproduced without further permission. Appropriate citations are requested.

Next Releases:

March Employment Report, Thursday, April 15th, 2021, 10:00 am

Location: ACA Conference Rooms, Camelback, 100 North 7th Avenue, Phoenix, AZ 85007

Office of Economic Opportunity

Sandra Watson	Interim Director
Doug Walls	Research Administrator
Stephanie Faltermeier	Labor System Manager

On the web: <https://laborstats.az.gov/>

Phone: 602-771-2222

To be placed on the *Arizona Workforce* email distribution list, or to send feedback or questions, contact:

labor.info@azstats.gov

— Equal Opportunity Employer/Program —

Under Titles VI and VII of the Civil Rights Act of 1964 (Title VI & VII), and the Americans with Disabilities Act of 1990 (ADA), Section 504 of the Rehabilitation Act of 1973, and the Age Discrimination Act of 1975, the Department prohibits discrimination in admissions, programs, services, activities, or employment based on race, color, religion, sex, national origin, age, and disability. The Department must make a reasonable accommodation to allow a person with a disability to take part in a program, service or activity. For example, this means if necessary, the Department must provide sign language interpreters for people who are deaf, a wheelchair accessible location, or enlarged print materials. It also means that the Department will take any other reasonable action that allows you to take part in and understand a program or activity, including making reasonable changes to an activity. If you believe that you will not be able to understand or take part in a program or activity because of your disability, please let us know of your disability needs in advance if at all possible. To request this document in alternative format or for further information about this policy, contact the Department of Economic Security, Division of Developmental Disabilities ADA Coordinator at 602 542-6825 ; TTY/TDD Services: 7-1-1.

This page left intentionally blank.